

360

370

359

361

351

Wilson Rd

2-1
↑

2-1

2-2

3-1

1-1

1-2

1-3

1-4

359/4-1
←

5-1

5-2

5-3

6-1

359/4-1
←

359/4-1
←

8-1

8-2

7-1

351/1-1
↓

7-1
↓

351/1-1
↓

351/1-1
↓

351/1-1
↓



360

370

Wilson Rd

2-1
↑

2-1

2-2

3-1

1-2

1-1

1-4

359/4-1
←

359

359

5-1

5-2

5-3

6-1

359/4-1
←

359/4-1
←

351

7-1

351/1-1

351/1-1

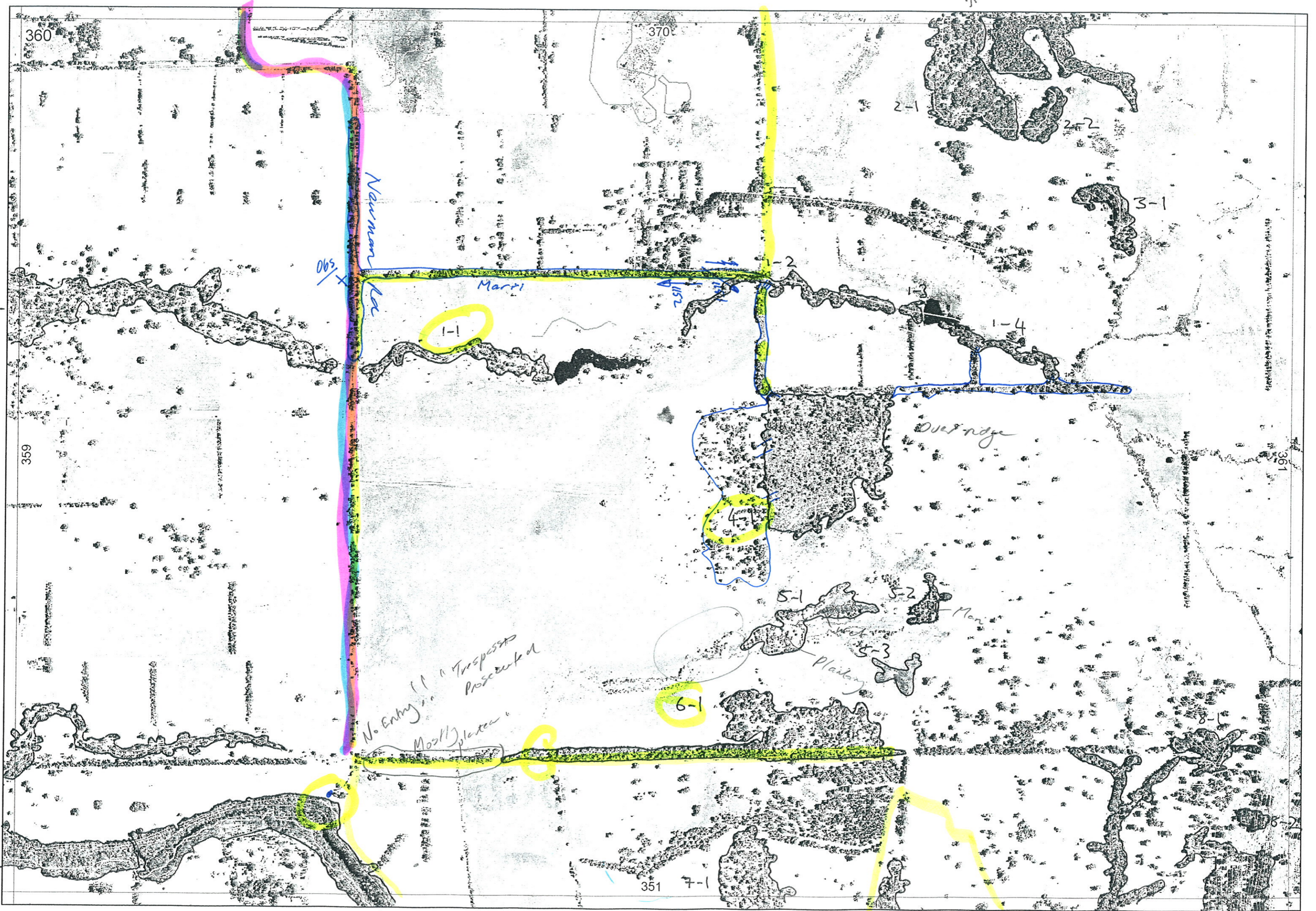
351/1-1

To Ag
18/9/06

351/1-1

7-1

Coolup Rd The Newman Rd



Newman Rd

Marri

Overidge

No Entry
Trespassers
Prosecuted
Mostly platan

1-1

4-1

6-1

2-1
↑

2-1

2-2

3-1

1-4

5-1

5-2

5-3

8-1

351

7-1

351/1-1

351/1-1

351/1-1

351/1-1

7-1

351
←

351
←

351
←

361

361

360

370

359

351

Map Sheet Number 360

Pre Field Recorder(s) PK

Field Recorder(s) Prosen Kargher, Erin Harris, Graham Sutherland, Delob

Swan Bioplan Vegetation Mapping Data

R E M	RE M2	XM AP	LIN TYPE	L I N E A R	M L U	U N I T S	U P L A N D ?	W E T L A N D ?	V I S I T ?	DETAIL/ Area Name	VEG CON	Field date 200_	OBS From	YNOTASS	D E T V I S R E Q D	COMMENTS	VEG STRU C/D ENS	FCT	DOMINANTS		
																			1	2	3
1	1		channel	Y	P	1		✓	✓		5.3	1/06	Edge		N		F		Euc cal	Euc rud	
1	2		channel Roadside	Y	P	2	✓	✓	Y		5.	1/06	Within		N	Road reserve to east good Xanthorrhoea + single	F		Euc cal		
1	3		"	Y	FD	1		✓	✓		5.3	1/06	Edge		N	Same as 1/1	F		Euc cal	Euc rud	
1	4		"	Y	FD	1		✓	✓		5.3	1/06	Edge		N	Same as 1/1	F		Euc cal	Euc rud	
2	1			N	FD	2	✓		✓												
2	2			N	FD	1	✓		N												
3	1			N	FD	1	✓		N												
4	1			N	FD	1	✓		✓		5.7	1/06	Super distance			Xanthorrhoea two obvious conditions CD - P	W		Euc cal	Euc mac	Euc wan
5	1		channel	N	FD	1	✓	✓	✓		5.7	1/06	Super distance	N	front section possible planted	F					
5	2		"	Y	FD	1		✓	✓		5.7	1/06	"		Possibly plantings				Euc cal		
5	3		"	Y	FD	1		✓	N		5.7	1/06	"		on the slope						
6	1		road	N	FD	1	✓		Y		5.7	1/06	Distance	N	unmade road reserve	F			Euc cal		
7	1	✓			FD	1	✓		N		5.7										
8	1				DS	1	✓		N		5.7				Grassy only	F					
8	2				DS	1	✓		N		5.7				"	F					

1151
1152

Summary/General Comments