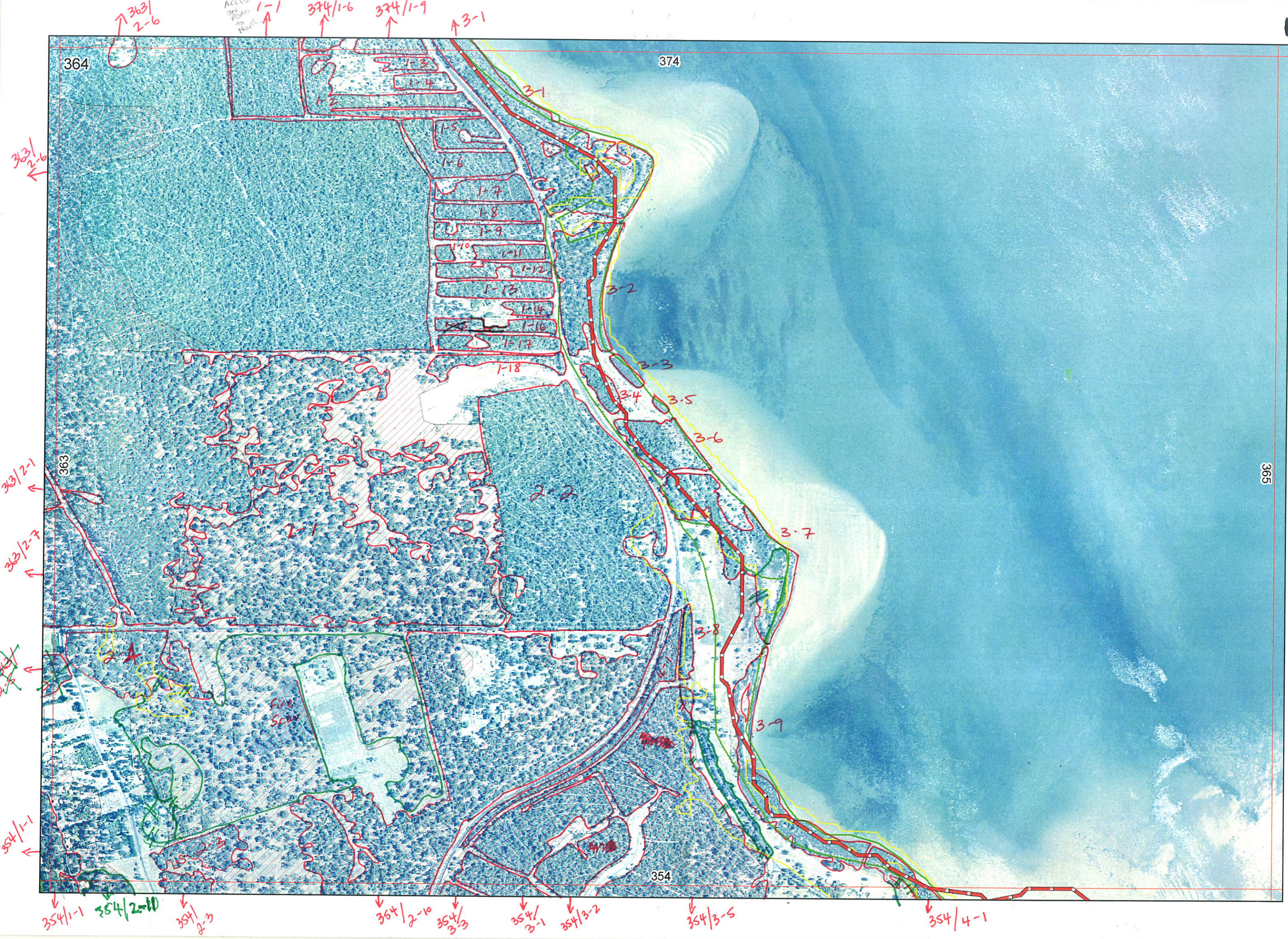


Ag



364

374

363

365

354

Fire Scar

354/2-10

354/2-3

354/2-10

354/3-3

354/3-1

354/3-2

354/3-5

354/4-1

363/2-6

363/2-1

363/2-7

354/1-1

ACCESS ON ROAD TO NORTH

374/1-6

374/1-9

3-1

3-1

3-2

3-3

3-4

3-5

3-6

3-7

3-8

3-9

2-1

2-2

2-3

2-13

1-4

1-5

1-6

1-7

1-8

1-9

1-10

1-11

1-12

1-13

1-14

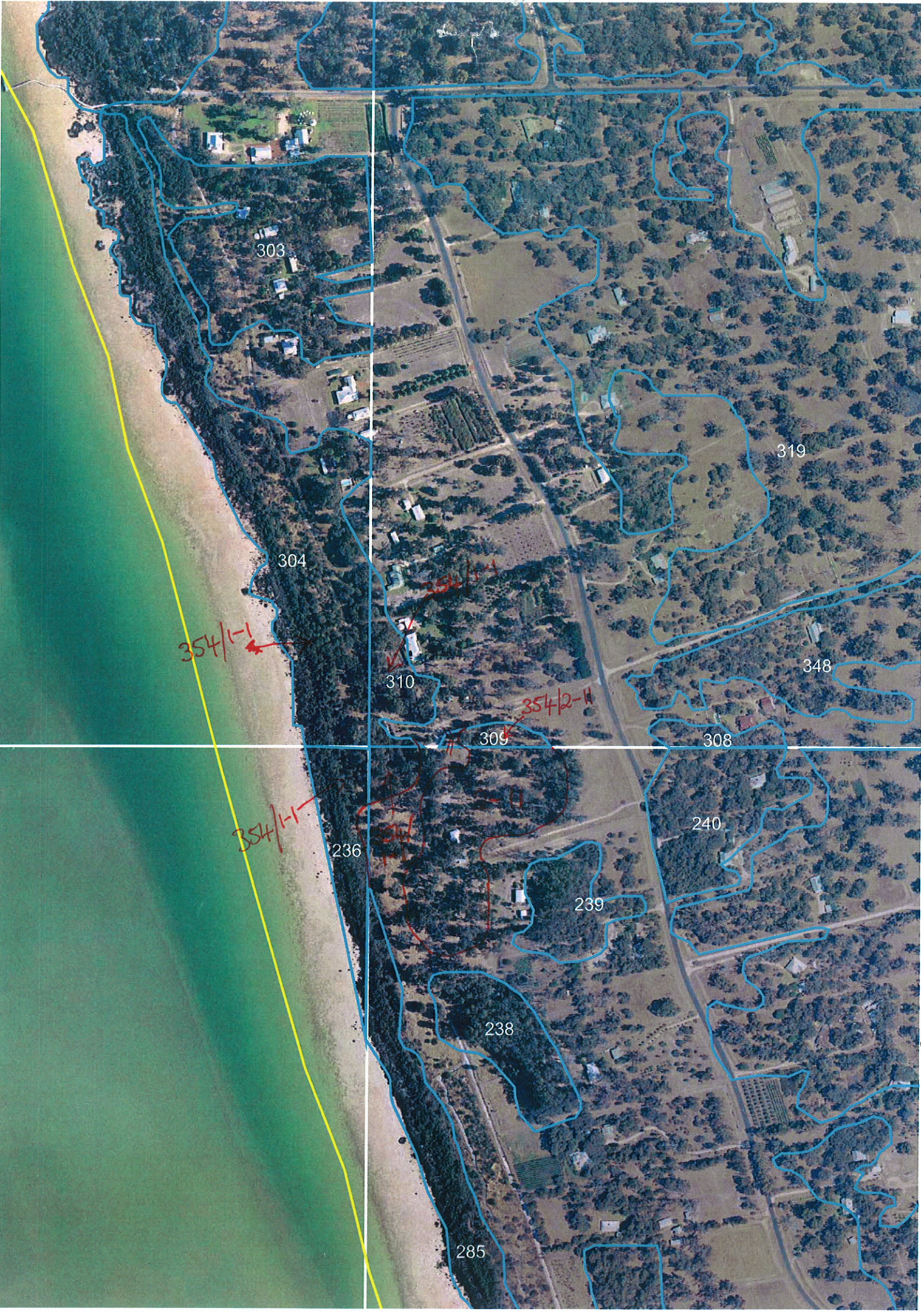
1-15

1-16

1-17

1-18

4-1



303

304

310

309

308

319

348

240

239

238

285

236

354/1-1

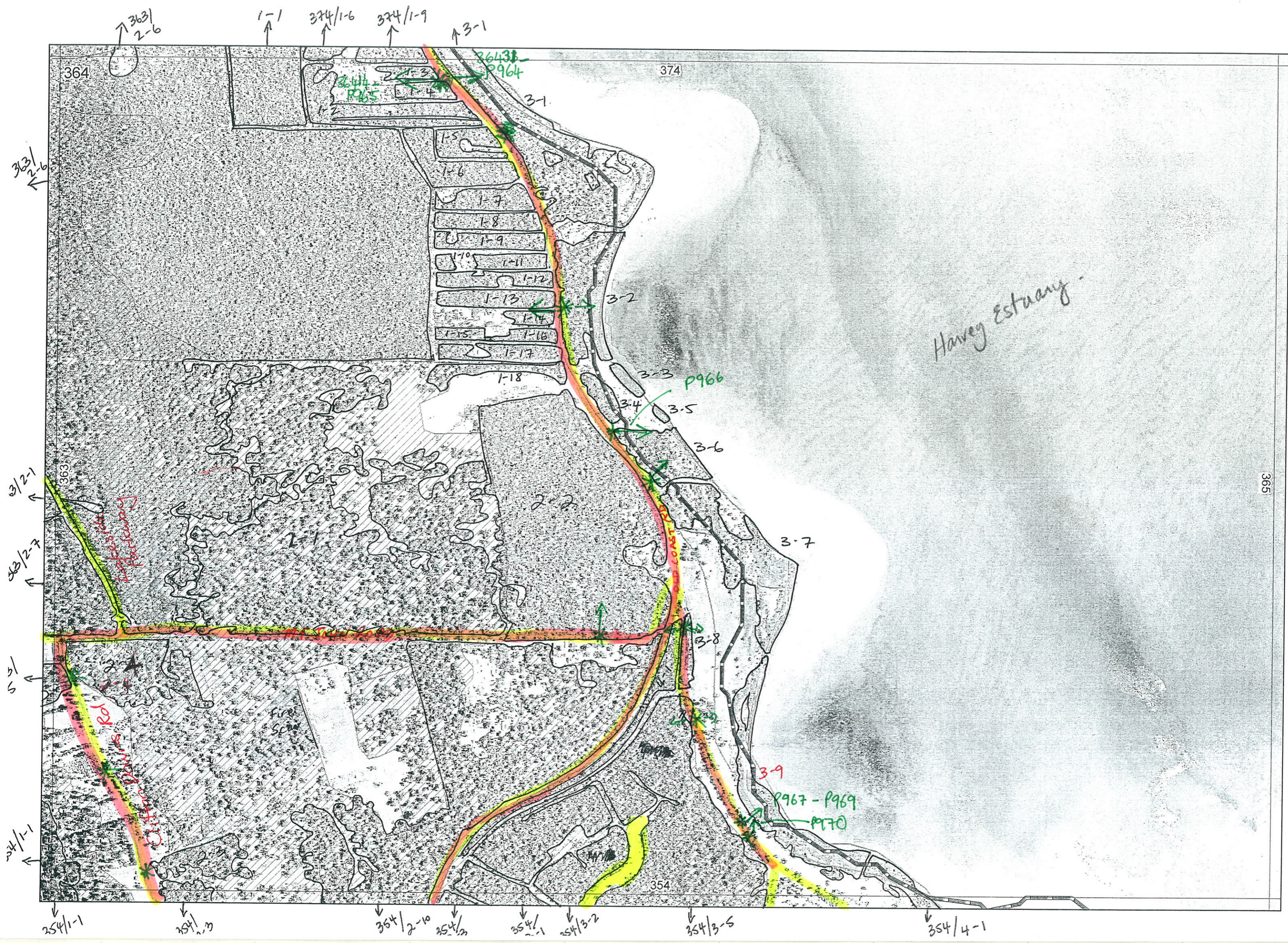
354/2-11

354/1-1

Sent to Ag



365



Harvey Estuary

364

374

365

354

3631  
2-6

1-1

374/1-6

374/1-9

3-1

36431  
P964

36434  
P965

3-1

1-5

1-6

1-7

1-8

1-9

1-10

1-11

1-12

1-13

1-14

1-15

1-16

1-17

1-18

3-2

3-3

P966

3-4

3-5

3-6

3-7

3-8

3-9

P967-P969

P970

3631  
2-6

363/2-1

363/2-7

363/2-1

364/1-1

354/1-1

354/2-10

354/3-1

354/3-2

354/3-5

354/4-1

354/4-1

Cliff Drive Rd

Fire Scar

1

Map Sheet Number 364

Pre Field Recorder(s) Bamb/Karen

Field Recorder(s) Karen/Brigit

Swan Bioplan Vegetation Mapping Data

R E M	RE M2	XM AP	LIN TYPE	L I N E A R	M L U	U N I T S	U P L A N D ?	W E T L A N D ?	V I S I T ?	DETAIL/ Area Name	VEG CON	Field date 200_	OBS From	YNOTASS	D E T V I S R E Q D	COMMENTS	VEG STRUC/ DENS	FCT	DOMINANTS		
																			1	2	3
1	1	✓			S	1	✓		✓		EX	20/4/06	Edge		N	Agonis flex present	F	?	Baratt	Eucal	
1	2				S	1	✓				G	2/4	Disto Aerial		N		F		Agoflex	Eucal	Baratt
1	3				S	1	✓				G	2/4	Disto Aerial		N		F		"	"	"
1	4				S	1	✓		✓		G	2/4	Edge		N	<del>As per 1-4</del> PQ65	F		Agoflex	Eucal	Baratt
1	5				S	1	✓									<del>As per 1-4</del> As per 1-4					
1	6				S	1	✓		✓							As per 1-13					
1	7				S	1	✓									As per 1-4, 13					
1	8				S	1	✓									As per 1-4, 13					
1	9				S	1	✓									As per 1-13					
1	10				S	1	✓									As per 1-4, 13					
1	11				S	1	✓									As per 1-4, 13					
1	12				S	1	✓									As per 1-13					
1	13				S	1	✓		✓		G	2/4	Edge		N	<del>As per 1-4</del>	F	?	Eucal	Agoflex	Baratt
1	14				S	1	✓									As per 1-13					
1	15				S	1	✓									As per 1-13					
1	16				S	1	✓									As per 1-13					
1	17				S	1	✓									As per 1-13					
1	18				S	1	✓									As per 1-13					

Summary/General Comments

R E M	R E M 2	X M A P	L I N E T Y P E	L I N E A R	M L U	U N I T S	U P L A N D ?	W E T L A N D ?	V I S I T ?	D E T A I L / Area Name	V E G C O N	F i e l d d a t e 200_	O B S F r o m	Y N O T A S S	D E T V I S I O N	C O M M E N T S	V E G S T R U C / D E N S	F C T	D O M I N A N T S		
																			1	2	3
2	1				S	1	✓		✓		CD/D	20/4	Edge		N	Grazed, Jarrah also present	F		Eucgom	Euc cal	Agoflex
2	2				S	1	✓		✓		VG-EX	21/4	Edge		N		F		Euc cal	Agoflex	
2	3				S	1	✓		✓		CD/D	21/4	Edge		N	<del>As per 354/2-3</del> grazed paddock cleared	F		Eucgom	Agoflex	
2	4				S	1	✓		✓		CD/D	20/4	Edge		N	<del>As per 2-3</del> Grazed, Jarrah also present	W		Eucgom	Euc cal	Agoflex
3	1	✓			S	2/3	X	✓	✓	Shore of Harvey Estuary	VG-EX	21/4	Edge		N	Dominants over Gahtri & Junkra 1964 Estuary foreshore	F		Eucrud	Aca sal	Junkra unit
3	2				S	2/3	X	✓	✓	Shore of Harvey Estuary	VG-G	21/4	Edge		N	As per 3-1 ✓ Peppermint present along western edge	F		Eucrud	Aca sal	← foreshore unit
3	3		Foreshore	Y	S	1		✓		Shore of Harvey Est.	VG	21/4	Distance		N	Meltha over Junkra	W		Meltha		
3	4				S	2	X	✓	✓	Shore of Harvey Est.	VG-G	21/4	Distance		N	<del>1966</del> Meltha over Gahtri	F		Eucgom	Aca Sal	
3	5		Foreshore	Y	S	1		✓		"	VG	21/4	Distance		N	Meltha over Junkra	W		Meltha		
3	6				S	3	X	✓	✓	"	Ex-VG	21/4	Edge		N	1966 2 Meltha, units one over Gahtri & other Junkra Condition variable, degraded	F		Eucgom	Agoflex	
3	7				S	1		✓	✓	"	Ex-VG	21/4	Distance		N	near southern end	W		Meltha		
3	8				S	1		✓	✓	"	Ex-VG	21/4	Distance		N	Eucgom/Agoflex - CD/D Meltha over Gahtri & Junkra	F		Eucgom	Agoflex	
3	8				S	1		✓	✓	"	CD/D	21/4	edge		N	Meltha W over Junkra	W		Meltha		
3	9				M	2	X	✓	✓	Shore of Harvey Estuary	VG-EX	21/4	distance		N	Sedge unit containing dead 1966-1969 & 1970 Meltha Sarcocornia unit + Camilla obesa	S		Junkra		
4	1				S	1		✓	✓		CD/D	21/4	edge		N	Mari present	F		Eucgom	Agoflex	

Summary/General Comments