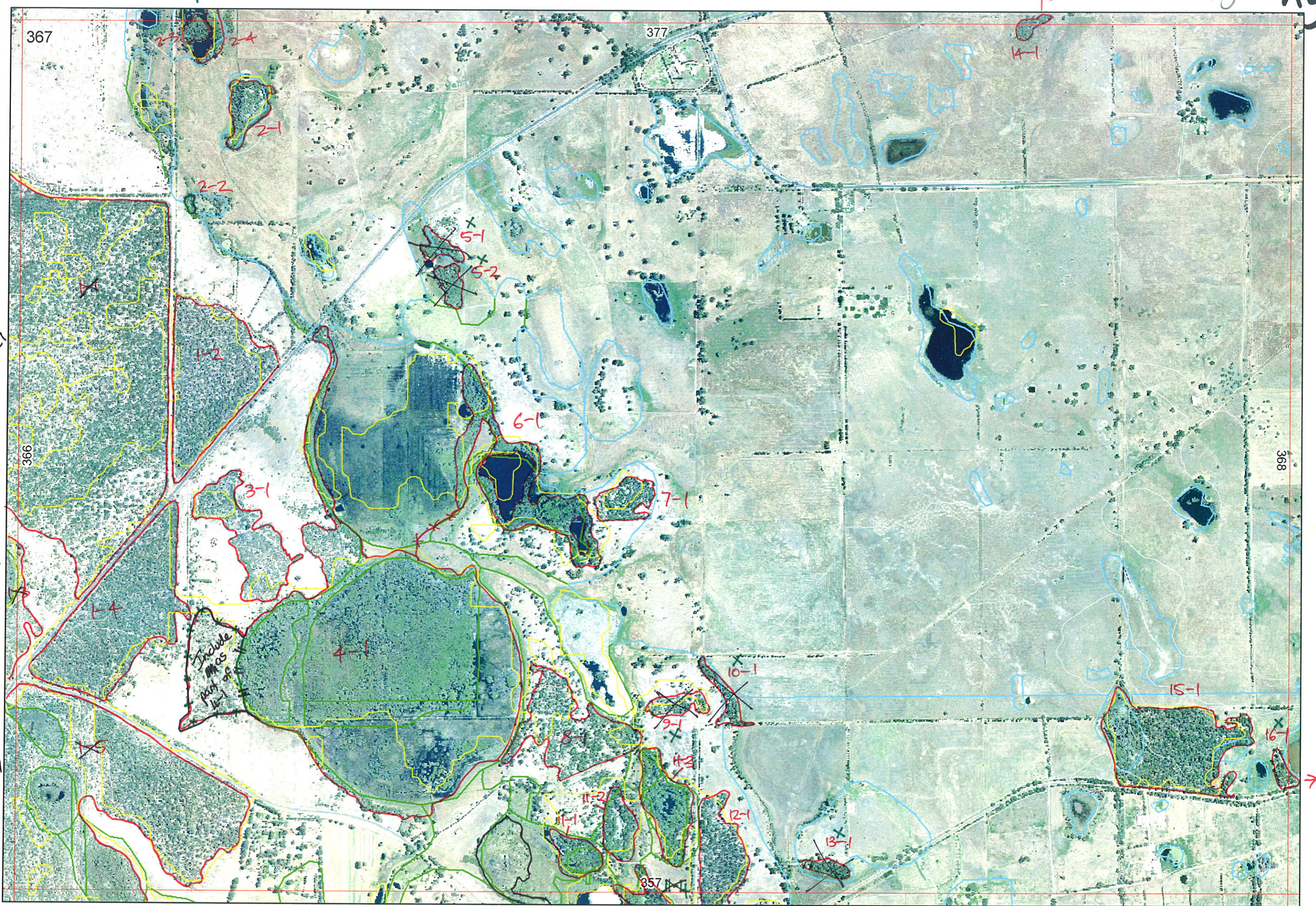


Ag ✓ Ag.



EEEA

2



Mistake
Ignored
3/3/01

Dutchman Rd

Old Bombarry Rd

367

377

674
Eucrod
Melrha
D7-CD

Agonis linearifolia
Eucrod
Melrha
2-2

Banili
All fra
EUCM
Banatt
Koneri
Yampre
Hibbing
G-D

5-1
CD
5-2
CD

Agonis

6-1

Koneri
All fra
Banili

5-D

7-1

4-4

Koneri
All fra
Banili
Banatt

G-D
Typha

9-1

10-1

G-D
Kunzea
Eucal
Eucadis
mel
Sedges
D
? include

Peel Harvey
Landcare landscapes
#27

Eucal
Yampre w/wetland
Bangra

15-1 V6-G

D-CD

673

11-1

11-2

11-4

12-1

13-1
Eucal
CD

672

16-1
Eucal
CD

Banili
All fra
Banatt
Nuy flo

Fishermans Rd

Koneri
All fra
Banili
Banmen
Banatt

CD diversity of o/s



Entered 16/11/05

REMNANT-PART NO	NON-LINEAR Y/N	LINEAR PLUS TYPE	CROSSES MAP SHEET BOUNDARY (Y/N)	FIELD VISIT REQ YES/NO	FIELD DATE	LOCAT. OBSERV.	WETLAND VEG (Y/N)	SIM REM FLT	DETAIL (Y/N)	Units	VEGETATION CONDITION	MLU	VEGETATION/PREVIOUS INFO	Struct.
1-1	N		Y	Y	?	Road	N	21a	Y	1	G-D	B/P	Banili, Allfra, Eucmar, Banatt, Kunglab, Xanpre, Hbhy	
1-2	N		Y	Y	?	Road	N	21a	Y	1	G-D	B/P	" " " "	
1-3	N		Y	N	?	Road	✓	NA	N	1		B/P	" " " "	
1-4	N		Y	Y	?	Road	N	NA	Y	1	VG-G	B	Kungla, Allfra Banili, Banatt & SB	
1-5	N		Y	Y	?	Road	✓	NA	N	2	D-CD	B	Banili, Banatt, Allfra, Nuyflo F, Mel F	
2-1	N		N	Y		Road	✓	NA	N	1	D-CD	PP	Eucrud melrha	
2-2	N		N	N		Road	✓	NA	N	1	D-CD	PP	" "	
3-1	N		N	N		Road	N	NA	Y	1	G-D	B	Kungla, Allfra Banili	
4-1	N	w/L	N	Y		Road	Y	NA	Y	2	G-D	B/B	Typha, Agolle; Banatt = 3-1 inferred	
5-1	N	w/L	N	N		Road	Y	NA	N	1	CD	B	REMOVED	
5-2	N	w/L	N	N		Road	Y		N	1	CD	B	Not Accessible REMOVED	
6-1	N	w/L	N	N		Aerial	Y			1	CD-D	B	Not Accessible = 4-1 wetland contig.	
7-1	N		N	N		Aerial	✓			1	D-CD	B	Not Accessible = Kunglab SP from aerial	
8-1	N		N	N		Aerial	✓			1	D-CD	B	Not Accessible = " "	
9-1	N		N	N		Aerial	✓			1	CD	B	Not Accessible = " " REMOVED	
10-1	N		N	N		Aerial	✓			1	CD	B	Not Accessible REMOVED	
11-1	N	w/L	N	N		Aerial	✓			1	D-CD	B	" aerial	
11-2	N		N	N		Aerial	✓			2	D-CD	B	" aerial	
11-3	N	w/L	N	N		Dist	✓			2	G-D	B	Kungla, Eucrud, Eucral, Mel? F Bedges S	
11-4	N		Y	N		Edge	✓			1	CD-D	B	See 357	
12-1	N		Y	N		Edge	✓			1	CD	B	Kungla, Allfra, Banili, Banmon Banatt	
13-1	N		N	N		Road	✓			1	CD	B	Eucral REMOVED	
14-1	N		Y	N		Aerial	✓			1	CD	B	Too far to see	
15-1	N		N	N		Road	✓			2	VG-G	B/P	Eucral, Xanpre, Bangra W, Mel F	
16-1	N		N	N		Road	✓			2	CD	B	Eucral REMOVED	
2-3			✓			Aerial	✓			1	CD-D		Not Assessed	
2-4			✓			Aerial	✓			1	CD-D		Not Assessed	
ADD to Comments Peel Harvey Landcare Landscapes # 27														
4-1	N		N	Y		Road	Y	NA	Y	>3	VG-D	B/P	Melprei Melrha F; Bank spp W; Kunglab M	
NOTES 1-1, Use Nine Mile Lake NR to typify these areas; visit 4-1 for others in immediate area, Follow up 15-1 Peel/Harvey Landcare Landscapes # 27														

Struct.
 F.
 F.
 F.
 W.
 F.
 assumed from aerial photographs