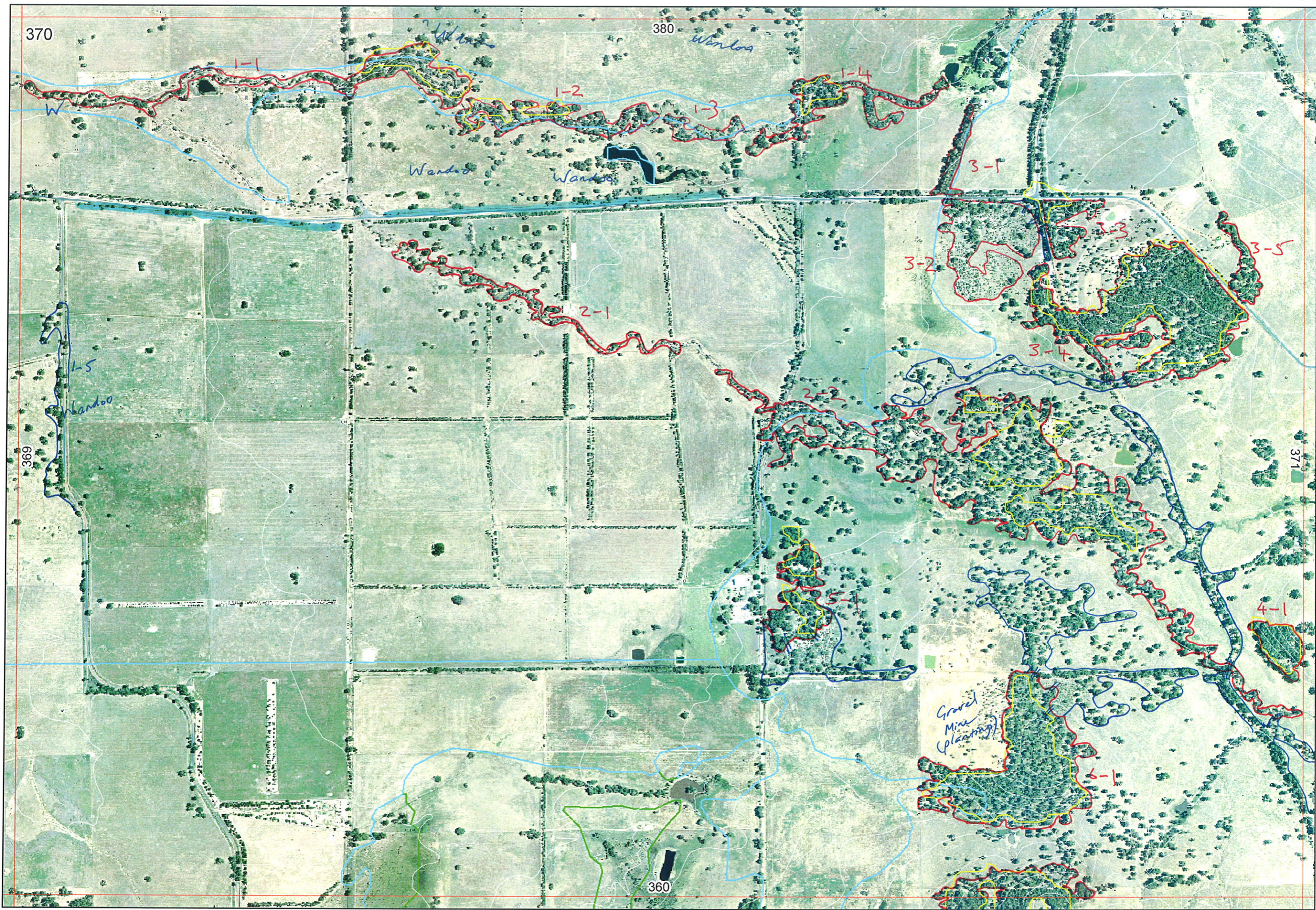
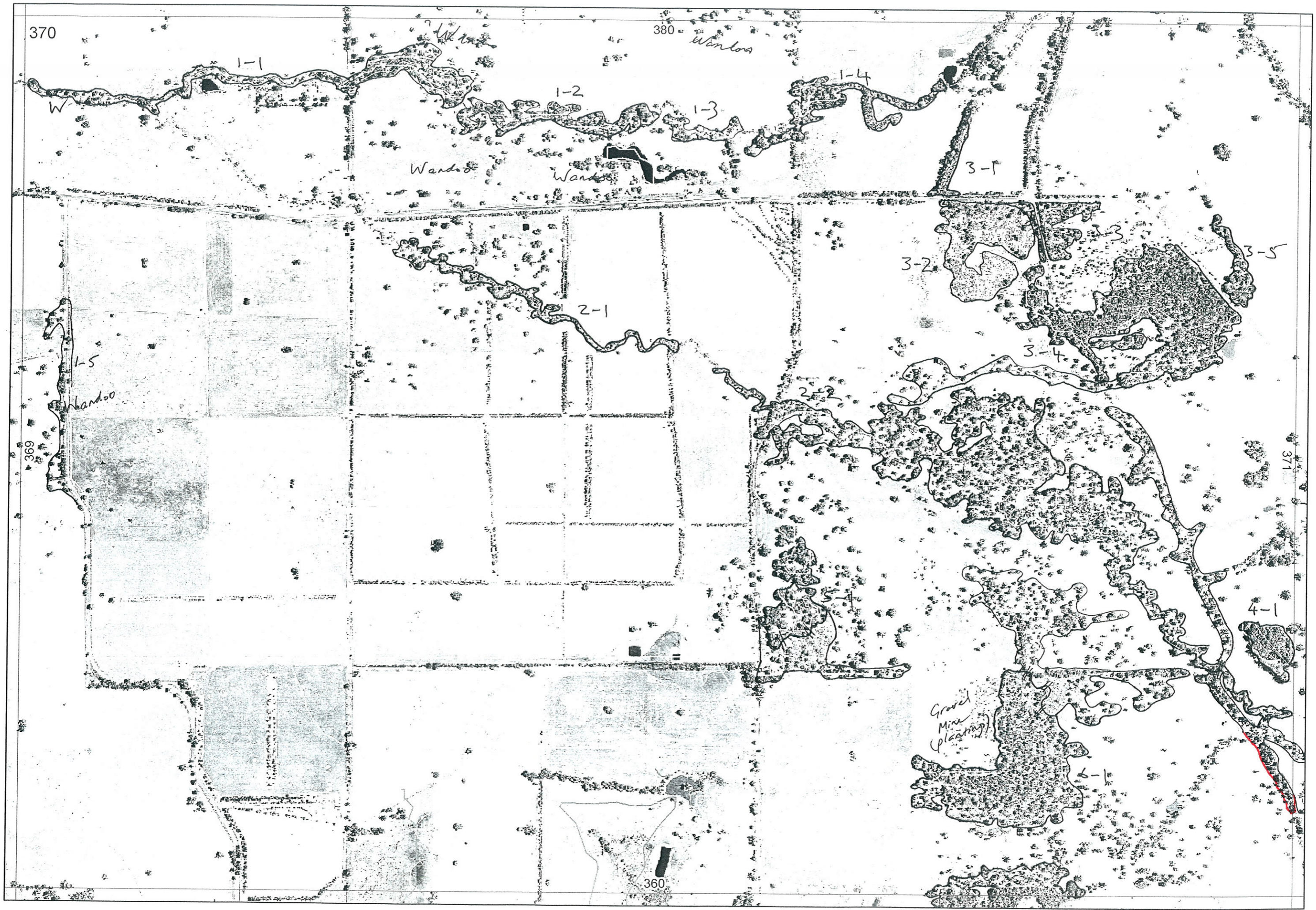


AK



↓
360/2-1



370

380

Wanted

Wanted

Wanted

Gravel Mine (planting)

360

371

To Ag. 18/9/06

↓

R E M	RE M2	XM AP	LIN TYPE	L I N E A R	M L U	U N I T S	U P L A N D ?	W E T L A N D ?	V I S I T ?	DETAIL/ Area Name	VEG CON	Field date 200_	OBS From	YNOTASS	D E T V I S R E Q D	COMMENTS	VEG STRUC/ DENS	FCT	DOMINANTS		
																			1	2	3
1	1	N	channel	Y	P	1		✓	N		S7		airial				W				
1	2	N	"	Y	P	1		/	Y		S7						F				
1	3	N	"	Y	P	1		/	N		S7		airial				W				
1	4	N	"	Y	P	1		✓	Y		S7						F				
2	1	N	"	Y	P	1		✓	N		S7		airial				W				
2	2	N	"	both	FD	2	✓	✓	✓		S7	1/06	within		Euc rudis, fatty		F		Euc wan Euc rudis	Euc cal	Euc mar
3	1	N	road	Y	FD	1	✓		✓		S7		Edge		plantings		F				
3	2	N	N	N	FD	1	✓		✓		S	1/06	Edge		Granite Xanthorrhoea		W		Euc mar	Xaa pre.	
3	3	N	N	N	FD	1	✓		✓		S7	1/06	Edge		Heavily grazed at present Sheep		F		Euc mar	Euc cal	
3	4	N	N	both	FD	1	✓	✓	✓		S3	1/06	Edge		Mangrove Good roadside patches Euc longleaf? No understory. Variable condition		F		Euc cal	Euc wan	Euc mar
3	5	N	channel	Y	FD	1		✓	✓		S3	1/06	Edge				W		Euc wan	Euc mar	
4	1	N		N	FD	1	✓		✓		S7	1/06	Edge				F		Euc cal		
5	1	N		both	FD	1	✓		✓		S3	1/06	within Edge		over xanthorrhoea windy place		W		Euc cal	Euc mar	
6	1	N	N	both	FD	1	✓		✓		S3	1/06	Very Distance edge		wandoo in January Road verge contains good veg Cremilla bipartita Xanthorrhoea		F		Euc cal	Euc mar	Euc wan
1	5		roadside	Y	P	1	✓		Y		S	1/06	within	Y	Xanthorrhoea + Watsonia		F		Euc wan	Euc cal	

1140 1149
1141 1150

1148

Summary/General Comments
visit 15