

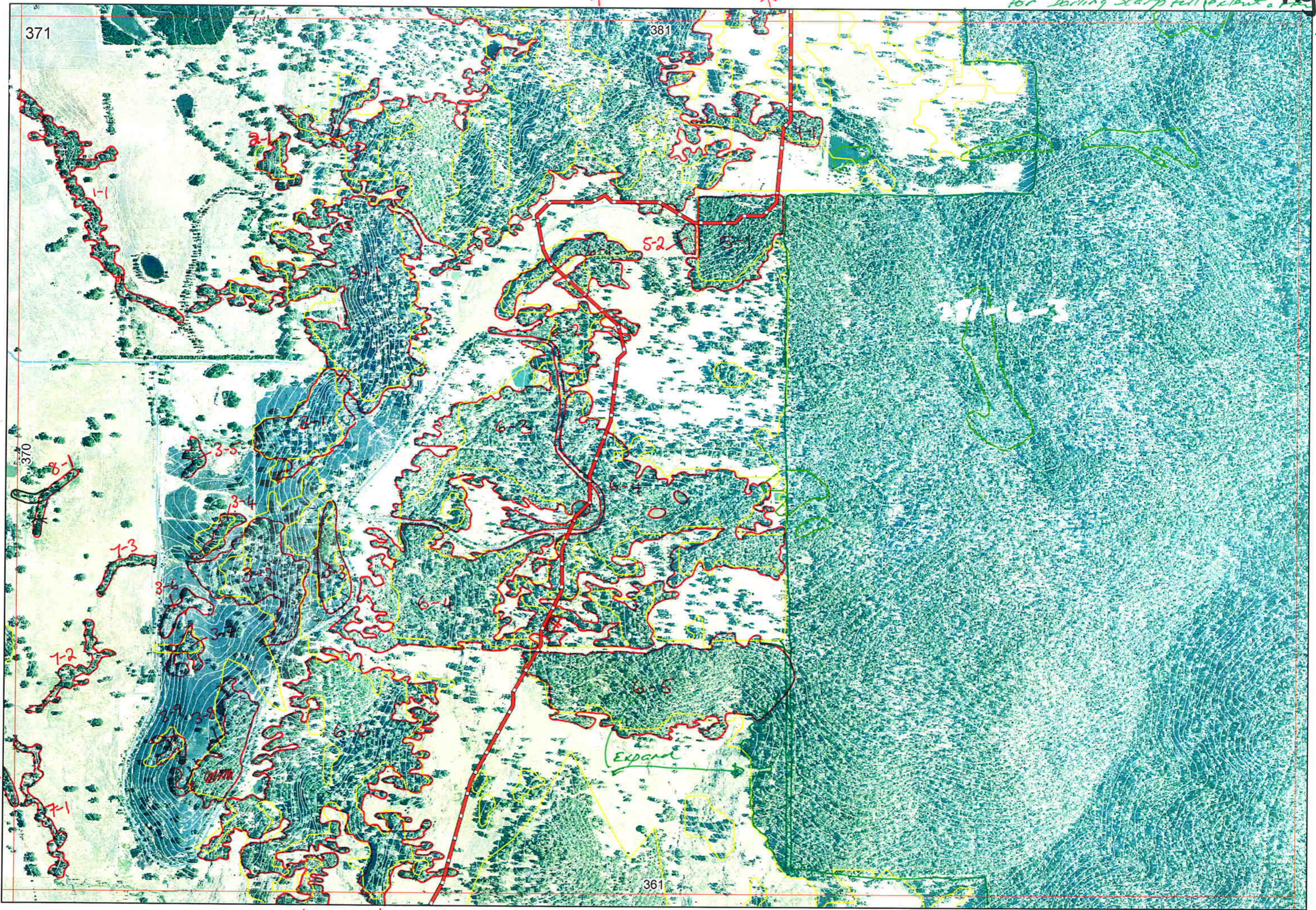
Green BK/GS 02/2010 381-6-3
for Darling Scarp fall out a. Ag

Ag 5-6
2007

381/6-1 ✓ 381/6-2

371

381



381-6-3

361

370/2-2

370

6-6 6-6 ✓

381-6-3

(AS 6/11/09).

Map Sheet Number 371

Pre Field Recorder(s) EH 3/10/06

Field Recorder(s) _____ Swan Bioplan Vegetation Mapping Data

REM	RE M2	XM AP	LIN TYPE	LINEAR	MLU	UNITS	UPLAND?	WETLAND?	VISIT?	DETAIL/ Area Name	VEG CON	Field date 200_	OBS From	YNOTASS	DET VIS REQD	COMMENTS	VEG STRUC/ DENS	FCT	DOMINANTS			
																			1	2	3	
1	1	N	-	N	DS	1	Y	N														
2	1	N	-	N	DS	1	Y	N														
3	1	N	-	N	DS	2	Y	N														
4	1	N	-	N	DS	1	Y	N														
5	1	N	-	N	DS	1	Y	N														
6	1	N	-	N	DS	1	Y	N														
6	2	N	-	N	DS	1	Y	N														
6	3	N	-	N	DS	2	Y	N														
6	4	N	-	N	DS	3	Y	N														
6	5	N	-	N	DS	1	Y	N														
6	6	Y	-	N	DS	3	Y	Y														
3	8																					
6	7	N	-	N	DS	1	Y	N														

Summary/General Comments
 Some remnants mapped by Erin, but data not recorded. * Some data added for those remnants by Gillian Stack 6 Nov 09.



To Ag 5/10/06