



374

384

373

375

364

373/1-4
Create break
with 384/2-6

Break with 384/2-5

Make fit
384/2-3

2-1

2-4

2-5

2-6

2-7

2-8

1-1

1-2

1-3

1-4

1-5

1-6

1-7

1-8

1-9

373/1-4

373/1-9

363/2-6

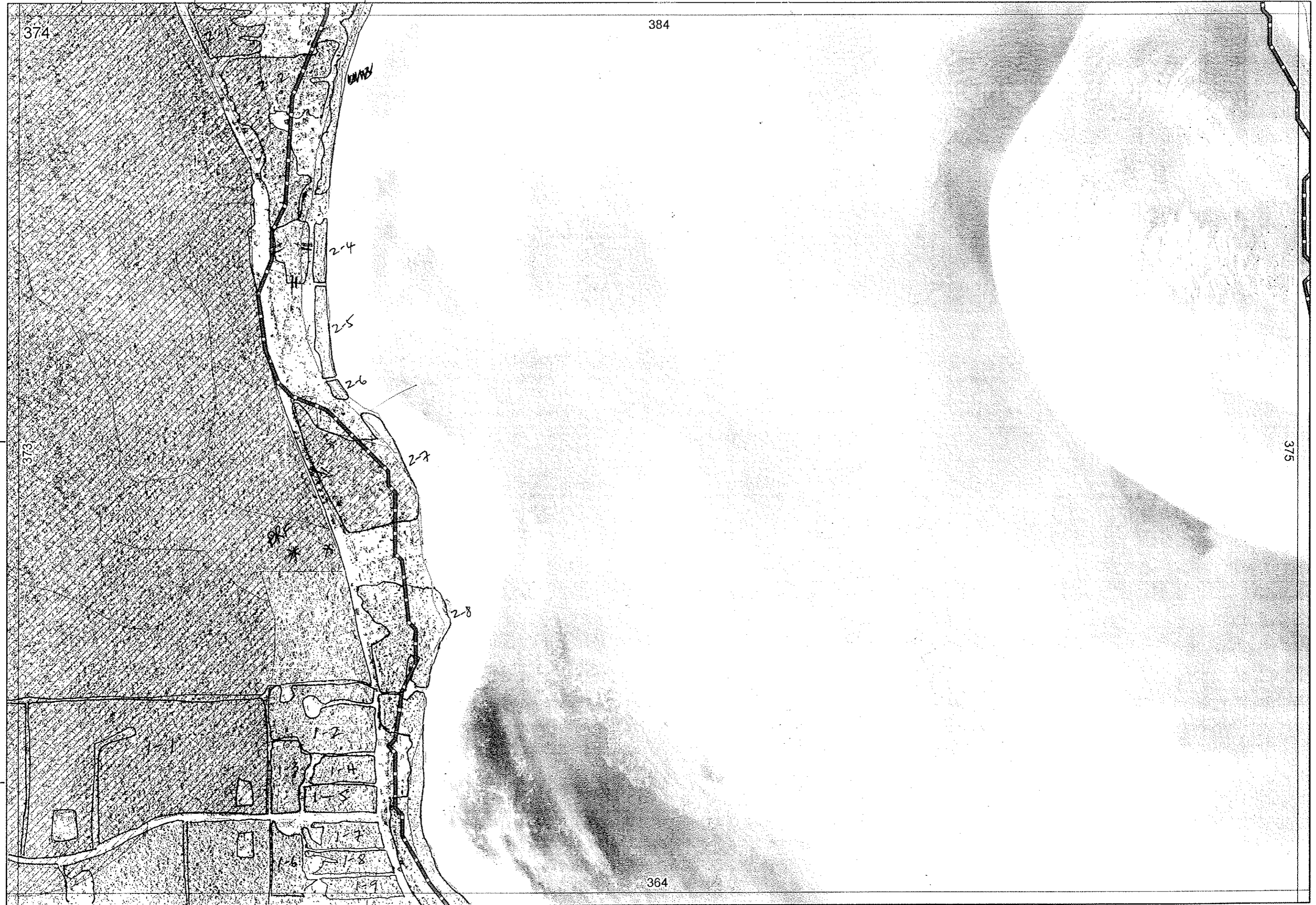
363/2-6

363/2-6

364/1-1

364/3-1

Sent to Ag



374

384

373

375

364

373/1-4

2-1

384/2-3

373/1-4

2-4

2-5

2-6

2-7

2-8

373/1-9

1-2

1-4

1-5

1-7

1-8

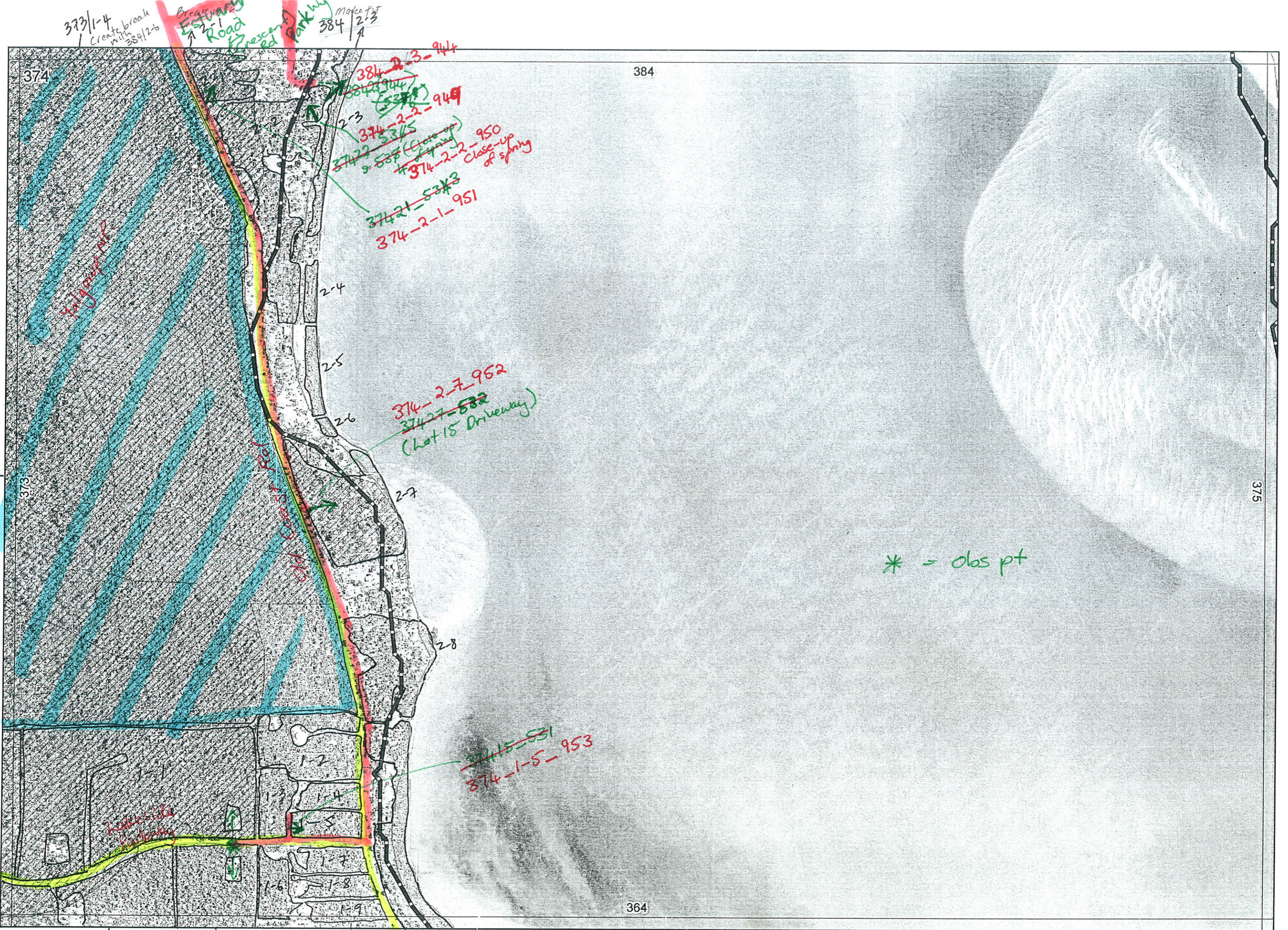
1-9

363/2-6

364/1-1

364/3-1

WATER



* = obs pt

373/1-4
Create break
with 384/2-6

Break
Estuary
Road

384/2-3
Make pt

Inglewood Ave

Old Coast Rd

Hillside
Parkway

374-2-7-952
374-2-7-532
(Lot 15 Driveway)

374-2-2-950
Close-up
of spring

374-1-5-953
374-1-5-531

384-2-3-944
374-2-2-949
374-2-2-950
374-2-2-951

374-2-1-951
374-2-1-953

363/2-6

364/1-1

364/3-1

373/1-4

373/1-9

374

373

384

364

375

R E M	R E M 2	X M A P	L I N E T Y P E	L I N E A R	M L U	U N I T S	U P L A N D ?	W E T L A N D ?	V I S I T ?	D E T A I L / A r e a N a m e	V E G C O N	F i e l d d a t e 200_	O B S F r o m	Y N O T A S S	D E T V I S I O N R E Q D	C O M M E N T S	V E G S T R U C / D E N S	F C T	D O M I N A N T S		
																			1	2	3
11					S	1	✓		✓	Contiguous with Yalgoo NP. DRF to the north.	Ex	20/4	Edge	-	N	As per 1-5	F	?21a	Banatt	Euc cal	
12					S	1	✓				Ex	20/4	Distance Aerial	No Access	N	As per 1-5	F	?	Banatt	Euc cal	
13					S	1	✓		✓		Ex	20/4	Edge	-	N	As per 1-5	F	?	"	"	
14					S	1	✓		X		Ex	20/4	Distance Aerial	-	N	As per 1-5	F	?	"	"	
15					S	1	✓		✓		Ex	20/4	Edge	-	N	As per 1-5 Peppermint present over Hibbyp. 953 PSBT	F	?	Banatt	Euc cal	
16	✓				S	1	✓		X		Ex	20/4	Distance Aerial	-	N	As per 1-5	F	?	"	"	
17					S	1	✓				Ex-VG		Aerial	No Access	N	As per 1-5	F	?	"	"	
18					S	1	✓				Ex-VG		Aerial	"	N	As per 1-5	F	?	"	"	
19	✓				S	1	✓				Ex-VG		Aerial	"	N	As per 1-5	F	?	"	"	
21	✓				S	1	✓		✓		VG-G	20/4	Edge	-	N	951 PS23	F	25?	Euc cal	Eucgom	Agoflex
22					S	2	✓	✓	✓		VG-Ex	20/4	Edge	-	N	949, 950 Peppermint, Bultoshorus? Spring VG-D (some CP) Variable condition	F	17?	Eucgom	Everud	(over sedges)
24			foreshore	✓	S	1	✓		✓	foreshore of Harvey Estuary	VG-Ex	20/4	Aerial	No Access	N	As per 2-3 384/2-3					
25			foreshore	✓	S	1	✓			"	"	"	"	"	N	As per " "					
26			foreshore	✓	S	1	✓			"	"	"	"	"	N	As per " "					
27					S	2	✓	✓	✓	"	VG-G	20/4	Edge		N	Adjacent DRF sites x 2 Conostylis pauciflora 359, pauciflora PS22, Banksia litt./seca/ovata 952	F	17?	Everud	Melrha	(?Tuart)
28					S	2	✓	✓	X	"	D-CP	20/4	Distance Aerial		N	"	F	?	Everud	(?Tuart)	
32	✓		foreshore	✓	S	1	✓	✓	✓	"	VG-Ex	20/4/06	Edge		N	Point Respec Resene Resene 44417 WRC	F	17?	Everud	Eucgom	Melrha

Summary/General Comments: P384-23-536 744
Tuart present
over sedges
Junop, Bramy, Gahtrif, Fcnod, ledop