

Ag Mapped ↑

Ag

Mapsheet 375

See Page 385

↑  
Map Sheet  
166

See Page 374

See Page 376

See Page 365

↓ 365-1-1



EEF

Mapsheet 375

See Page 385

NR

22

23

24

25

31

71

7-2

Scott  
Agonis

8-1  
Local  
Apple  
Market  
Empire

See Page 376

NR

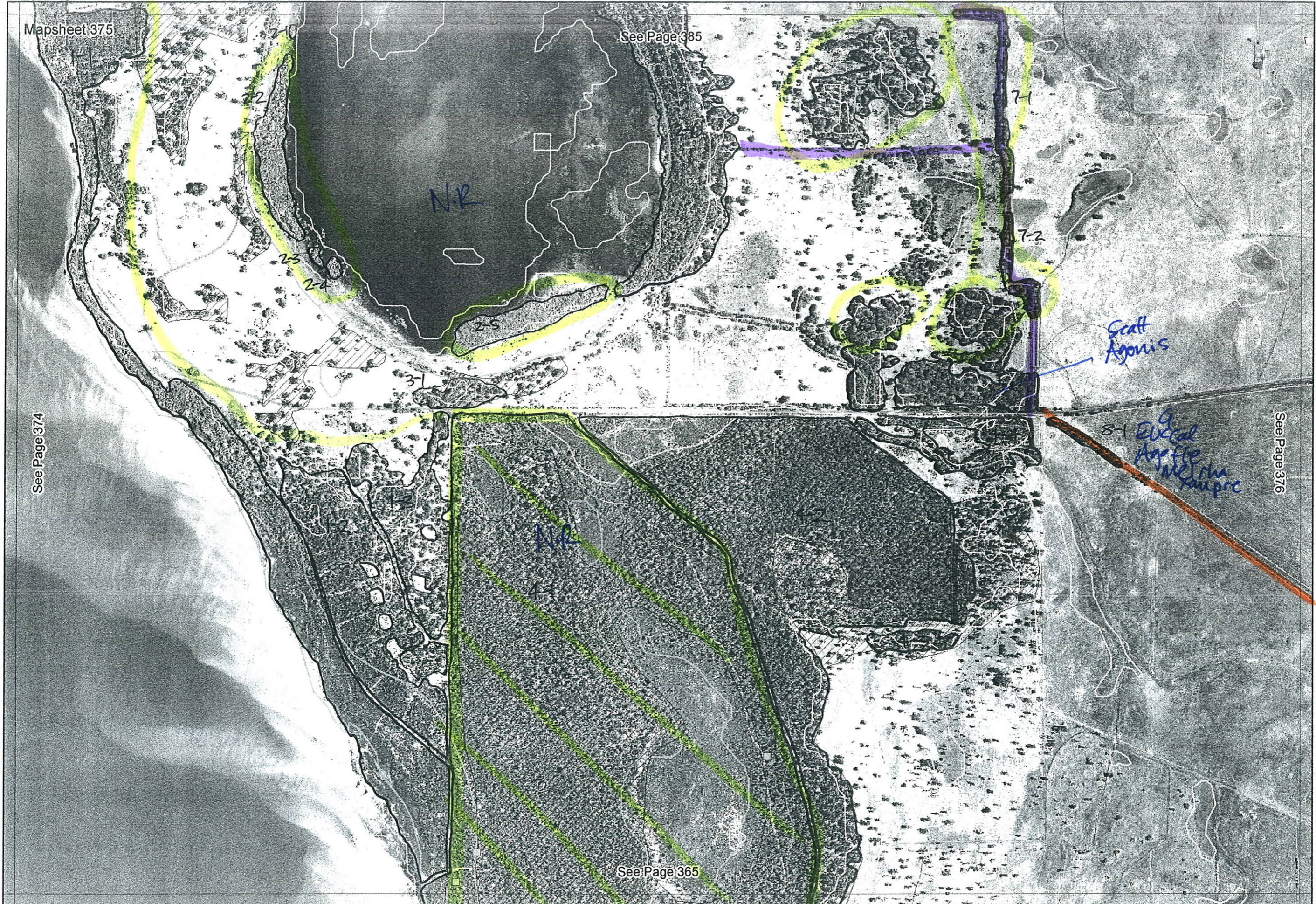
See Page 365

Birchmont  
Rd  
? track

↑  
Map  
Sheet  
166

See Page 374

↓







A lease not worth changing

20/1/06 Assumed edge when not entered and travelled on road.

SCP NATURAL AREA MAPPING SHEET

DoE 8/2005

MAP SHEET 375

REC PRE-FIELD SM

REC FIELD \_\_\_\_\_

REMNANT-PART NO	NON-LINEAR	LINEAR PLUS	CROSSES MAP SHEET BOUNDARY (Y/N)	FIELD VISIT REQ YES/NO	FIELD DATE	LOCAT. OBSERV.	WETLAND VEG (Y/N)	SIM REM	DETAIL (Y/N)	No Units	VEGETATION CONDITION	MLU	VEGETATION/PREVIOUS INFO
1-1	N	lakeshore	Y	N	05		W W						*
1-2	Y												
1-3	Y												
2-1	N	fringing veg											
2-2													
2-3													
2-4													
2-5													
2-6			Y										
3-1	Y												
4-1			Y			part of	365-1-1						*
4-2			Y										
4-3													
4-4													
5-1													
6-1													
6-2	✓		N	Y	13/10								
7-1			Y										
7-2													
8-1				Y	13/10								
NOTES													

\* also on other sheets.

9/8/05

SCP NATURAL AREA MAPPING SHEET

DoE BJ Keighery 8/2005

MAP SHEET 67

REC PRE-FIELD

REC FIELD

REMNANT NO	REMNANT GROUPED	NON-LINEAR	LINEAR PLUS	NO WETLAND (PARTIAL)	% WETLAND VEG	FIELD YES/NO	FIELD DATE	PHOTO NO	LOCAT. OBSERV.
385-1-2 1	N	Y		(1)	8				
385-1-7 23x	N	Y		(2)	9				
375-6-1 3 *	N	Y		0	0				
375-6-2 4 *	N	Y		1	5				
385-2-1 5	N	Y		1	10				
385-3-1 6	N	Y		1	10				
385-4-1/2 7	N	Y		1	10				
375-5-1 8 new									
375-7-1/2 9 new		N	road res						
<p>↳ ALSO 375-2-6</p>									
<p>NOTES</p>									

