

2



Thompson Rd ↑

Mapsheet 376

See Page 386

↑
Map sheet 167

Mills Rd

Mills Rd →

See Page 375

See Page 377

See Page 366

2-1

5-1

7-2

7-3

3-1

4-1

8-1

8-2

12-1

plowings

Melna VA
6-3, 4-4, 5-5

Melna Euc rod
6-1

Melna VA
7-4

Melna VA
11-1

Melna E. rod
CD

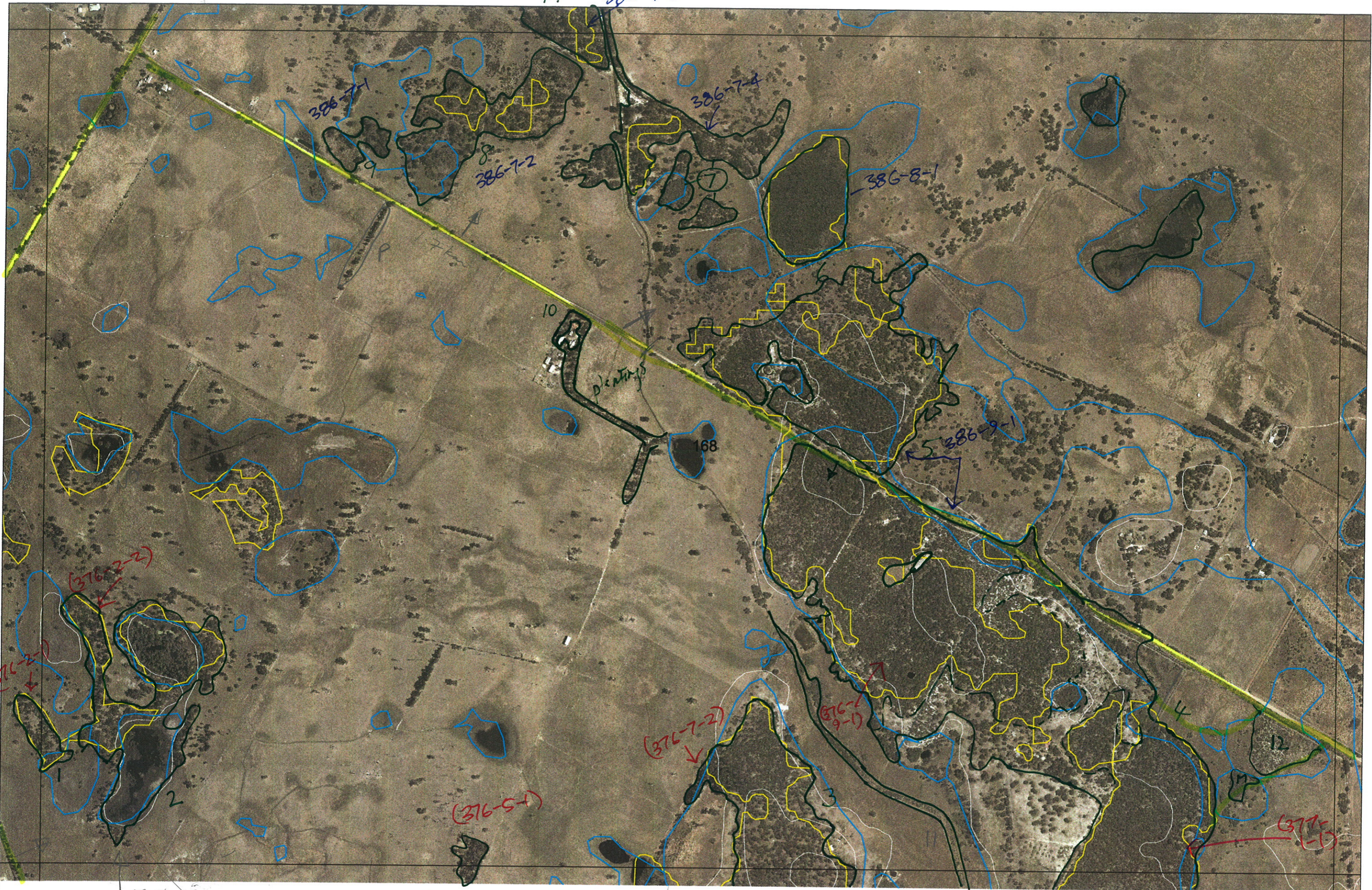
EX
Upland veg:
Ban aff
Hib hyp
Euc mar
Kampce
All tra

? plots

Agout Melna
? Perell

fil 40
fil 40





4: 386-7-3

386-7-1

386-7-4

386-7-2

386-8-1

10

plantings

168

386-9-1

(376-2-2)

(376-2-1)

(376-7-2)

(376-9-1)

(376-5-1)

(377-1-1)

Mills Pa
SWAN BIOPLAN MAP SERIES
MAPSHEET 168

TERRESTRIAL ECOSYSTEMS BRANCH
January 24, 2005

4 Mills Rd
3 Mills Rd
4 Rd
||

4 Mills Rd
4



MAP SHEET	LINEAR	PATCH	DATE	PHOTO	Completely Degraded: Description	Other.
168	Road Rural Channel	Inspect.	5/02		Sig Species.	
D 1	376-2-1	✓	5/02			
C 2	376-2-2	✓	5/02		Wetland	
B 3	376-7-2	✓	5/02		Wetland	
A 4	376-9-1 and 377-9-1	✓	3718 5/02		Upland/Wetland - check various conditions Ex/VG/S/D	} with 12 track/rd. passable middle
I 5	386-9-1	✓	5/02		check contiguous 4	
H 6	386-8-1	✓			Wetland. Mel rhaps 790% cover ? KD	
G 7	386-7-4	✓ _s	5/02		Number associated patches Merri over tank	
F 8	386-7-2	✓	5/02		Euc radis Mprecis edges wetland/UP CD/D + Euc scattered centre Mel text Mel pretifolia, Mel rhaps (depost) Marri to N, Caude juncea patches	
E 9	386-7-1	✓	5/02		Marri, Euc radis + Lepid long Mel p Wetland	
G 10	✓		5/02		Plantings.	Entered. 9/1/06.
A 11		✓ DRAIN	5/02			
12	Drain Road plus	✓	5/02 3713/17		D/G/VG Vim, jun. Mel Vim latiflor. unc bred rhaps cut - Ac/pisio var bred over chance, Chart, Meebsp Pogonolepis claypon. = FCT 7/8/	32° 42.592' } Mel 115° 49.459' } later

376.



? not mapped check Map Sheet 377 and add

REMNANT-PART NO	NON-LINEAR	LINEAR PLUS	CROSSES MAP SHEET BOUNDARY (Y/N)	FIELD VISIT REQ YES/NO	FIELD DATE	LOCAT. OBSERV.	WETLAND VEG (Y/N)	SIM REM	DETAIL (Y/N)	VEGETATION CONDITION	VEGETATION/PREVIOUS INFO
1-1			Y								
2-1				N							
2-2				N							
3-1				Y	13/10						
4-1				Y	13/10						
5-1				N							
6-1				Y	13/10						
7-1				Y	13/10						
7-2				N							
7-3				Y	13/10						
8-1				Y?							
8-2				Y?							
9-1			Y	N							
10-1			Y	Y	13/10						
11-1			Y	Y	13/10						
12-1			Y	Y?							
13-1	on	map									
NOTES											