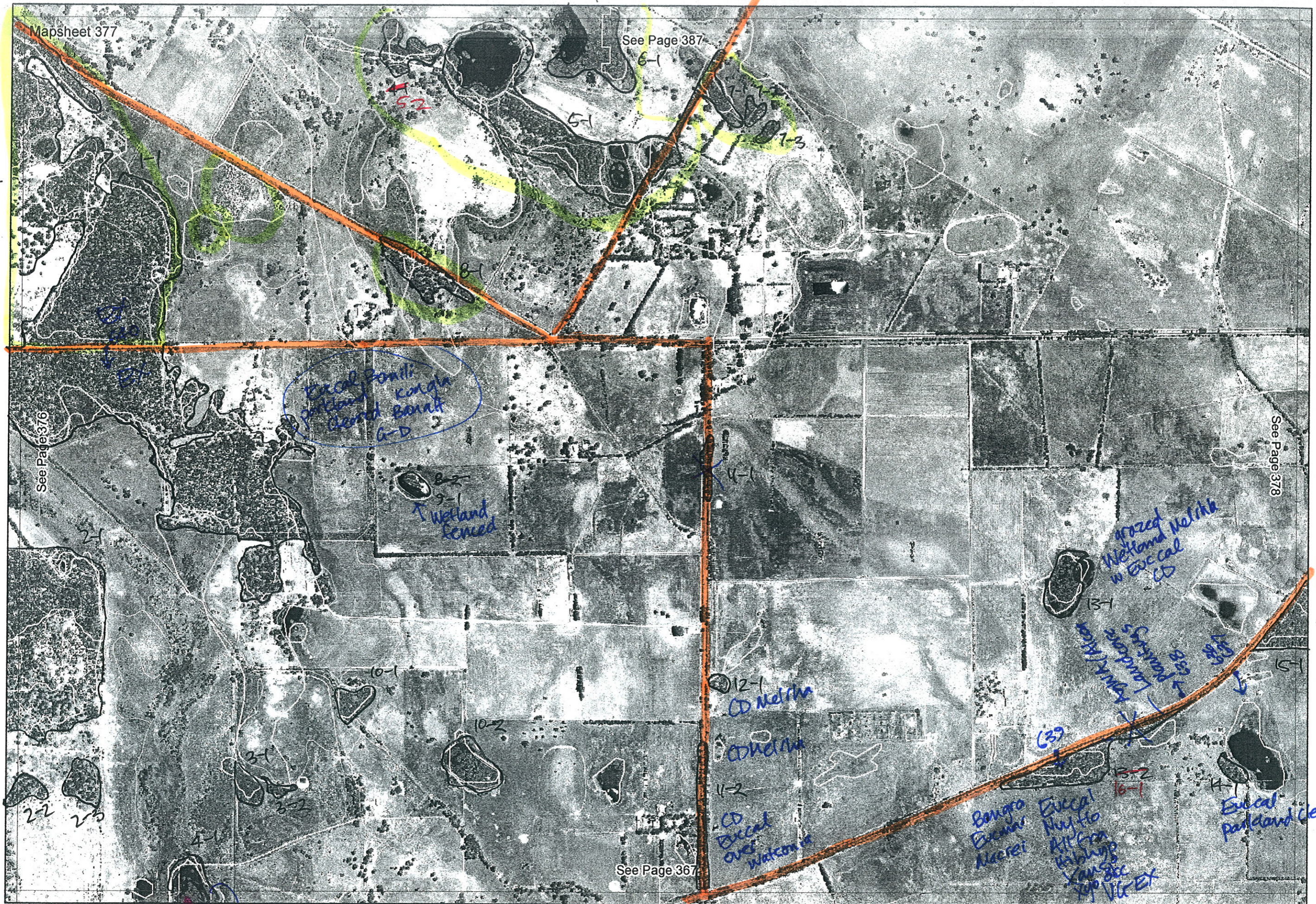




Daley Rd

Sutcliffe Lane

Mills Rd



652 Melina
 Dutchman Rd

Evans Rd

? plot

Old Bonny Rd

Mapsheet 377

See Page 387

See Page 376

See Page 378

See Page 367

Eucal Bonli
parkland
cleared
Bonni
G-D

Wetland
fenced

grazed
Wetland Melika
w Eucal
G-D

12-1
CD Melina

CD Melina

11-2
CD Eucal
over
Watson rd

Benora
Eucal
Macraei

Eucal
Nuy Ho
ATP
Kibling
Kangaroo
see
VUEX

Eucal
parkland cleared

13-1
Kynsley
Landscape
→ Parklands
→ 658
→ 659

639

13-2
16-1

24

22 23

3-1

10-1

10-2

11-1

11-2

13-1

14-1

↑

←

↓

→

Map for this data @ 376

	Rural Channel	PATCH Inspect.	DATE PHOTO	DESCRIPTION	Other
	376-2-1	✓	5/02	Completely Degraded: Description 519 Species.	
C 2	376-2-2	✓	5/02	Wetland	
B 3	376-7-2	✓	5/02	Wetland	
(4)	376-9-1 and 377-9-1	✓	3718 5/02	Upland/Wetland - check various conditions Ex/VG/A/D	} with 12 tracks from passable middle
(5)	386-9-1	✓	5/02	check contiguous 4	
H 6	386-8-1	✓		Wetland. Mel rhaph > 90% cover ? KD	
G 7	386-7-4	✓	5/02	Number associated patches Merri over tank	
F 8	386-7-2	✓	5/02	Euc radis Mpreiss edge Wetland/up CD/D + Er scattered centre Mel forest	
E 9	386-7-1	✓	5/02	Mel parvifolia, Mel rhaph (degest) Mam to N, Banded junco patches	
G 10	✓		5/02	Mam, Euc radis + Lepid long Mel p Wetland Plantings.	Entered. 9/1/06.
A 11	✓		5/02		
(12)	Drain Road Plus	✓	5/02 3713/17	D/G/VG Vim junco. Mel Vim, lateralis, unc, bred rhaph cutk - Ac/prio var brant over chance, Chant, Meebsp Pogonolepis claypon. = PCT 7/8/	320 42.592 } Mel 1150 47.459 } later



✓ DRAIN

? not mapped check MapSheet 377.

New SHEET - No info on old sheet

Map Sheet Number 377 Pre Field Recorder(s) BJK/SM Field Recorder(s) SM 13/10/05 BJK 5/2/05 Swan Bioplan Vegetation Mapping Data

R E M	RE M2	XM AP	LIN TYPE	L I N E A R	M L U	U N I T S	U P L A N D ?	W E T L A N D ?	V I S I T ?	DETAIL/ Area Name	VEG CON	Field date	OBS From	YNOTASS	D E T V I S I O N R E Q D	COMMENTS	VEG STRU C/ DENS	FCT	DOMINANTS		
																			1	2	3
1	1	Y	—	N	B/p	2	Y	Y	Y		VG	5/2	edge		Y	Patches Ex ora D	W	21	Bank att	Allo fras	Bank menz
1	2	N	—	N	P	2	N	Y	Y		VG	5/2	edge		Y		W	5	MEL PREI		
																	M	7or8	Mel lat	Mel o'sul	Mel vim
																	S	7or8	Gch tri	Chaet aristatus	Melb species
1	3	N	—	N	B/p	1	N	Y	Y		D	5/2	dist				W	NA	Euc. cal.		
2	1	Y	—	N	B	2	Y	Y	N		D/G	NA	aerial	too far away	N		W	NA	- W - Molp - u - Barnatt, Allca, Barman		
2	2	Y	—	N	B	1	Y	N	N		"	"	"	"	"		"	"			
2	3	N	—	"	"	"	"	"	"		"	"	"	"	"		"	"			
3	1/2	N	—	N	B	1	N	Y	N		D	NA	aerial	too far away	N		M	NA	Melaleuca		
3	2/3	N	—	N	B	1	N	Y	N		D	NA	aerial	too far away	N		M	NA	Melaleuca		
4	1	Y	—	N	B	1	N	Y	Y		?	13/10	edge	—	?		F	NA	MEL RHAPH		
5	1	N	—	N	B/p	3	Y	Y	Y		D/CO	5/2	dist/edge		Y	Patches appear to be VG, presence Kingia indicates PP in area	W	NA	Euc cal	over Xanth prei & Kingia	
																	W	NA	Mel rhap	over Lepid lang	
																	W	NA	Euc rudis	Mel prei	
5	2	N	—	N	B	1	?	?	N		D/CO	20/6 27/1	aerial	not visible	Y						
6	1	Y	—	N	B	2	N	Y	Y		D	06 27/1	aerial	too far	Y		S	NA	Sedges		
																	W	NA	Melaleuca		
7	1	N	—	N	B	1	N	Y	N		D	05 5/2 06 27/1	edge aerial		N						
7	2	N	—	N	B	1	N	Y	N		D	05 5/2 06 27/1	edge aerial		N						
7	3	N	—	N	B	1	N	Y	N		D	05 5/2 06 27/1	edge aerial		N						
8	1	N	—	N	B/p	1	Y	N			D/CO						W		EUC CAL	over Xanth prei	
9	1	N	—	N	B/p	1	N	Y			?	13/10	dist aerial	?							

Summary/General Comments High priority to visit 1-1, others less priority

Additional to entry on 9/1/06
? Only in Database

R E M	RE M2	XM AP	LIN TYPE	L I N E A R	M L U	U N I T S	U P L A N D ?	W E T L A N D ?	V I S I T ?	DETAIL/ Area Name	VEG CON	Field date	OBS From	YNOTASS	D E T V I S R E Q D	COMMENTS	VEG STRUC/ DENS	FCT	DOMINANTS		
																			1	2	3
10	1	}	See		N	B	1	✓								- aerial w-Melap		NA			
10	2																		database	N	B
11	1	N	road	Y	B	1	Y	N	Y		CD	13/10	edge			REMOVE	F	NA	EUC CAL		
11	2	N	road	Y	B	1	Y	N	Y		CD	13/10	edge			REMOVE	F	NA	EUC CAL		
12	1	N	—	N	B	1	N	Y	Y		CD	13/10	edge			REMOVE	F	NA	MEL RHAPH		
13	1	N	—	N	B	1	N	Y	Y		D/CD	13/10	dist			Keep on size and H ₂ O plus canopy	F	NA	Melaleucos		
14	1	N	—	N	B	1	Y	N	Y		CD	13/10	dist			REMOVE	F	NA	EUC CAL		
15	1	Y	—	N	P/B	→				recorded on											
16	1	N	road	B	B/P	2	Y	N	Y		VG/EX	13/10	edge				F	NA	EUC CAL	Nuytsia	Allo FRGS
																	F	NA	BANK GRASS	EUC MARS	

Summary/General Comments
15-1 priority for protection

double units
 shown as

REMNANT-PART NO	NON-LINEAR	LINEAR PLUS	CROSSES MAP SHEET BOUNDARY (Y/N)	FIELD VISIT REQ YES/NO	FIELD DATE	LOCAT. OBSERV.	WETLAND VEG (Y/N)	SM REM	DETAIL (Y/N)	units	VEGETATION CONDITION	STRAWY DCM	VEGETATION/PREVIOUS INFO
1-1			Y	Z	N		Wet Up	MLU					
2-1			Y	Z									
2-2			Y	Z	13/10								
2-3				Y									
3-1				Y									
3-2				Y									
4-1			Y	Y									
5-1				Z									
5-2				Z									
6-1	Y	N	Y	Z	5/2 distance		Y N	B/P	N	2	D	SM NA	Sedges / Melaleucas
7-1				Z									
7-2				Z									
7-3				Z									
8-1				Z									
9-1				Y	13/10								
10-1				Z									
10-2				Z									
11-1	N	road		Y									
11-2	N	"		Y									
12-1				Y									
13-1				Y									
14-1				Y									
15-1			Y	Y									
16-1	N	road		Y									
1-2													
1-3													
NOTES													