

Ag ✓ Ag

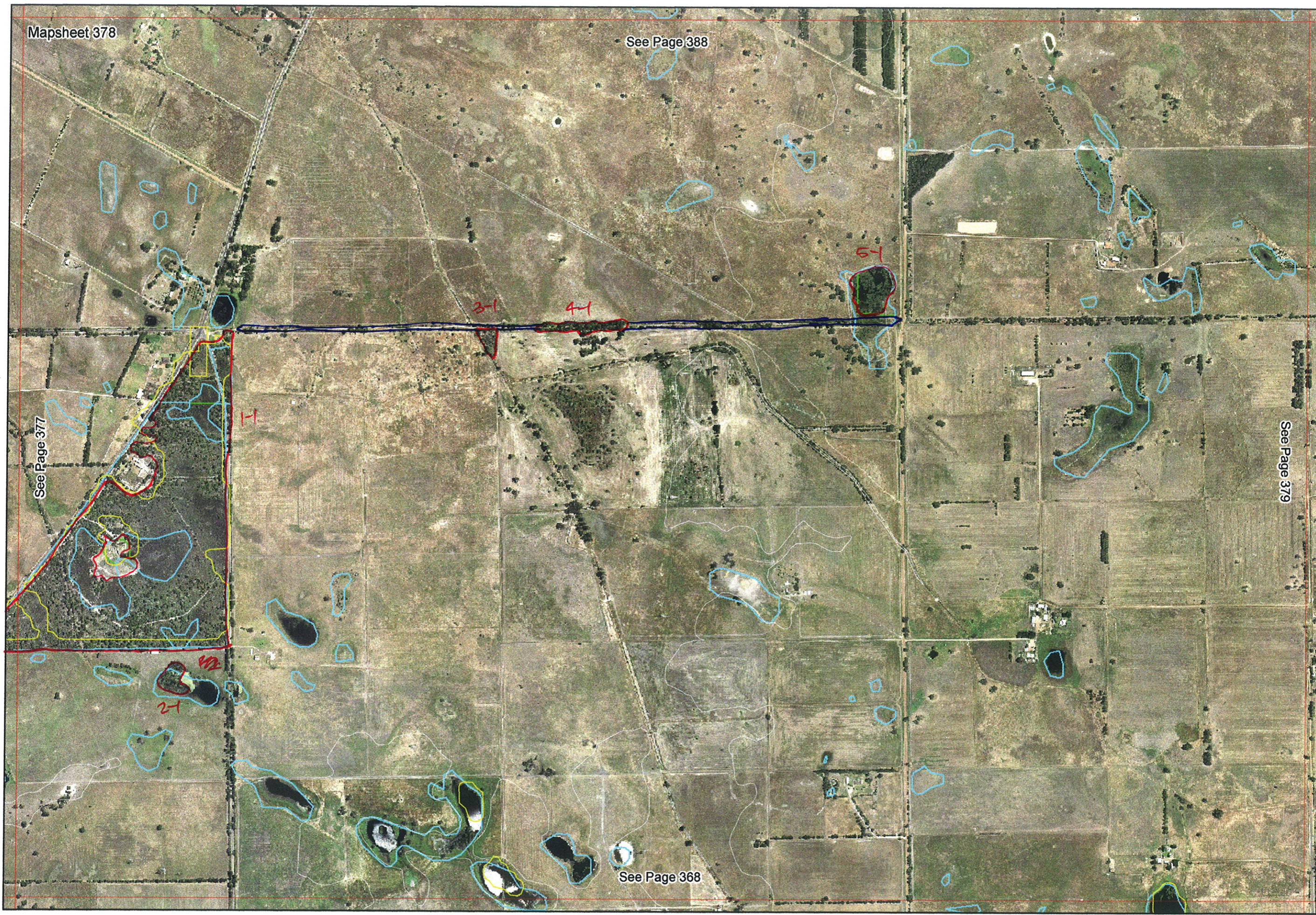
Mapsheet 378

See Page 388

See Page 377

See Page 379

See Page 368



BBEA



4↑

388-6-1

CO Harris

plantings

Forest

plantings
388-4-1

Forest

170

3

2

(378-5-1)

Mills Rd

Palos plains

McHenry/Harris

SWAN BIOPLAN MAP SERIES
MAPSHEET 170

TERRESTRIAL ECOSYSTEMS BRANCH
January 24, 2005

T/O W into Cadup go N then W in
Hart Road.



Bore Swamp Rd

Mapsheet 378

See Page 388

Milk Rd

CD
Milk Rd

Local
Swamp

3-1
4-1
9

See Page 377

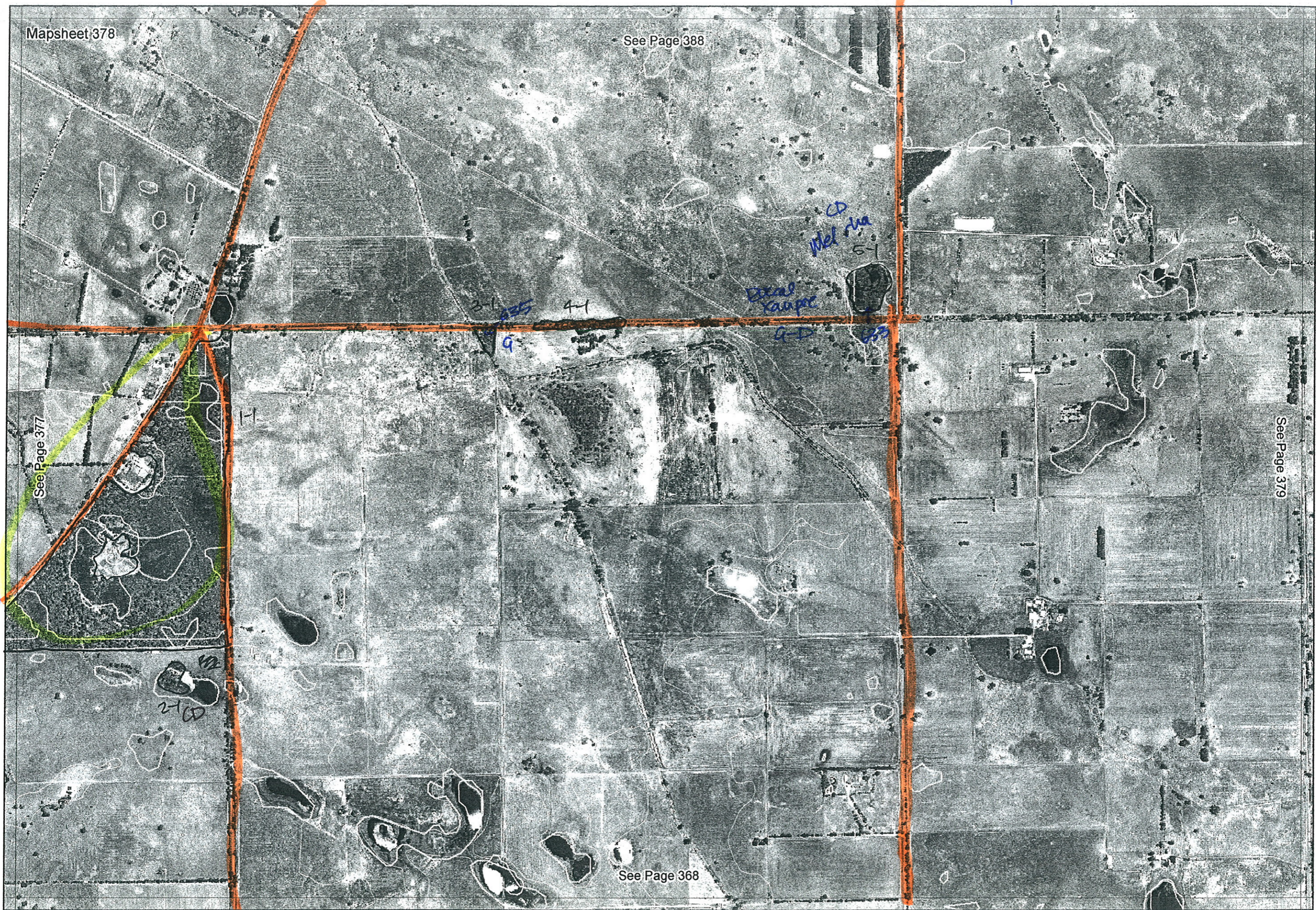
See Page 379

Old
Bonyon
Rd

2-1
CD

See Page 368

Brownes Rd



R E M	RE M2	XM AP	LIN TYPE	L I N E A R	M L U	U N I T S	U P L A N D ?	W E T L A N D ?	V I S I T ?	DETAIL/ Area Name	VEG CON	Field date	OBS From	YNOTASS	D E T V I S R E Q D	COMMENTS	VEG STRUC/ DENS	FCT	DOMINANTS		
																			1	2	3
1	1	Y			P	4	Y	Y	Y		Ex/NA	2005	trans		Yes	Five separate Reserves, including Riffe Range	W	3	EUCAL		
																	M	5/7/00	MEL species		
																	S	7/10a	MEE species		
2	1		/	/	P	1	N	Y	Y		D/CD	13/10	aerial (BOK)				F	NA	MEL species		
3	1																				
4	1																				
5	1									BOK	5/02/05	170-1, photo 3702									
Connected in field by linear remnant; call										b-12 (below)											
1	2	N	Fence	B	P	3	Y	Y	N		A/D	5/02	edge/aerial	not seen	No	Combination 3-1, 4-1 & 5-1	F	NA	MEL RHA		
																	W	NA	EUCAL	over next prei	

Correction
check entered.

Summary/General Comments

		Date	Notes	Paul's Rd - patches	
		Photo		Marri Mel rhyphs D/CO.	
		5/20	✓ Mel rhyphs CD (distance) - Paul's rd	✓ large patches Mel rhyphs	388-3-3
C		5/2	✓ Mel rhyphs, Mel pui ? patch Mel tree CD.		388-2-1
A	15	5/2	✓ CD Marri, E. radis plus plantings	scat xanth	? not mapped CD anyway
170					
1		5/02	✓ Opp linear plantings paddock	occ E. radis self sown	
		3702	Remnant = wetland (✓), Mel rhyph CD		378-5-1
2		5/02	✓ Plantings (like Mel rhyph rd) contiguous with above		
			Paddock Sect Marri		
3		5/02	✓ Open HD (Wetland ✓) fringing plantings NW corner,	Mel rhyphs, Baumea adn. pelt.? Ar. solis, Mel lateritia.	not mapped ? add
3a		3703			
4		5/02	✓ Marri over xantha prassid CD	CD/D	
		5/02	✓ Mel rhyphs, E. radis		388-6-1
5		5/02	✓ CD Marri over xantha	occ Mel rhyph	cant see on map.
		3704			

