

383

393

382

384

373

Ag

1-1

1-11

2-1

384/2-8

4-1

384/2-2

384/2-1

384/2-8

384/2-8

3-2

1-1

1-2

1-4

1-9

384/2-7

384/2-7

384/2-6

384/2-6

373/1-4

383/1-1

373/1-2

373/1-3

373/1-4

1-2

1-12

1-5

1-6

1-7

1-10

1-8

1-9

3-12

3-10

3-11

3-14

3-1

3-2

3-3

3-4

3-5

3-6

3-7

3-8

3-9

3-10

3-11

3-12

3-13

3-14

3-15

3-16

3-17

3-18

3-19

3-20

3-21

3-22

3-23

3-24

3-25

3-26

3-27

3-28

3-29

3-30

3-31

3-32

3-33

3-34

3-35

3-36

3-37

3-38

3-39

3-40

3-41

3-42

3-43

3-44

3-45

3-46

3-47

3-48

3-49

3-50

3-51

3-52

3-53

3-54

3-55

3-56

3-57

3-58

3-59

3-60

3-61

3-62

3-63

3-64

3-65

3-66

3-67

3-68

3-69

3-70

3-71

3-72

3-73

3-74

3-75

3-76

3-77

3-78

3-79

3-80

3-81

3-82

3-83

3-84

3-85

3-86

3-87

3-88

3-89

3-90

3-91

3-92

3-93

3-94

3-95

3-96

3-97

3-98

3-99

3-100

3-101

3-102

3-103

3-104

3-105

3-106

3-107

3-108

3-109

3-110

3-111

3-112

3-113

3-114

3-115

3-116

3-117

3-118

3-119

3-120

3-121

3-122

3-123

3-124

3-125

3-126

3-127

3-128

3-129

3-130

3-131

3-132

3-133

3-134

3-135

3-136

3-137

3-138

3-139

3-140

3-141

3-142

3-143

3-144

3-145

3-146

3-147

3-148

3-149

3-150

3-151

3-152

3-153

3-154

3-155

3-156

3-157

3-158

3-159

3-160

3-161

3-162

3-163

3-164

3-165

3-166

3-167

3-168

3-169

3-170

3-171

3-172

3-173

3-174

3-175

3-176

3-177

3-178

3-179

3-180

3-181

3-182

3-183

3-184

3-185

3-186

3-187

3-188

3-189

3-190

3-191

3-192

3-193

3-194

3-195

3-196

3-197

3-198

3-199

3-200

3-201

3-202

3-203

3-204

3-205

3-206

3-207

3-208

3-209

3-210

3-211

3-212

3-213

3-214

3-215

3-216

3-217

3-218

3-219

3-220

3-221

3-222

3-223

3-224

3-225

3-226

3-227

3-228

3-229

3-230

3-231

3-232

3-233

3-234

3-235

3-236

3-237

3-238

3-239

3-240

3-241

3-242

3-243

3-244

3-245

3-246

3-247

3-248

3-249

3-250

3-251

3-252

3-253

3-254

3-255

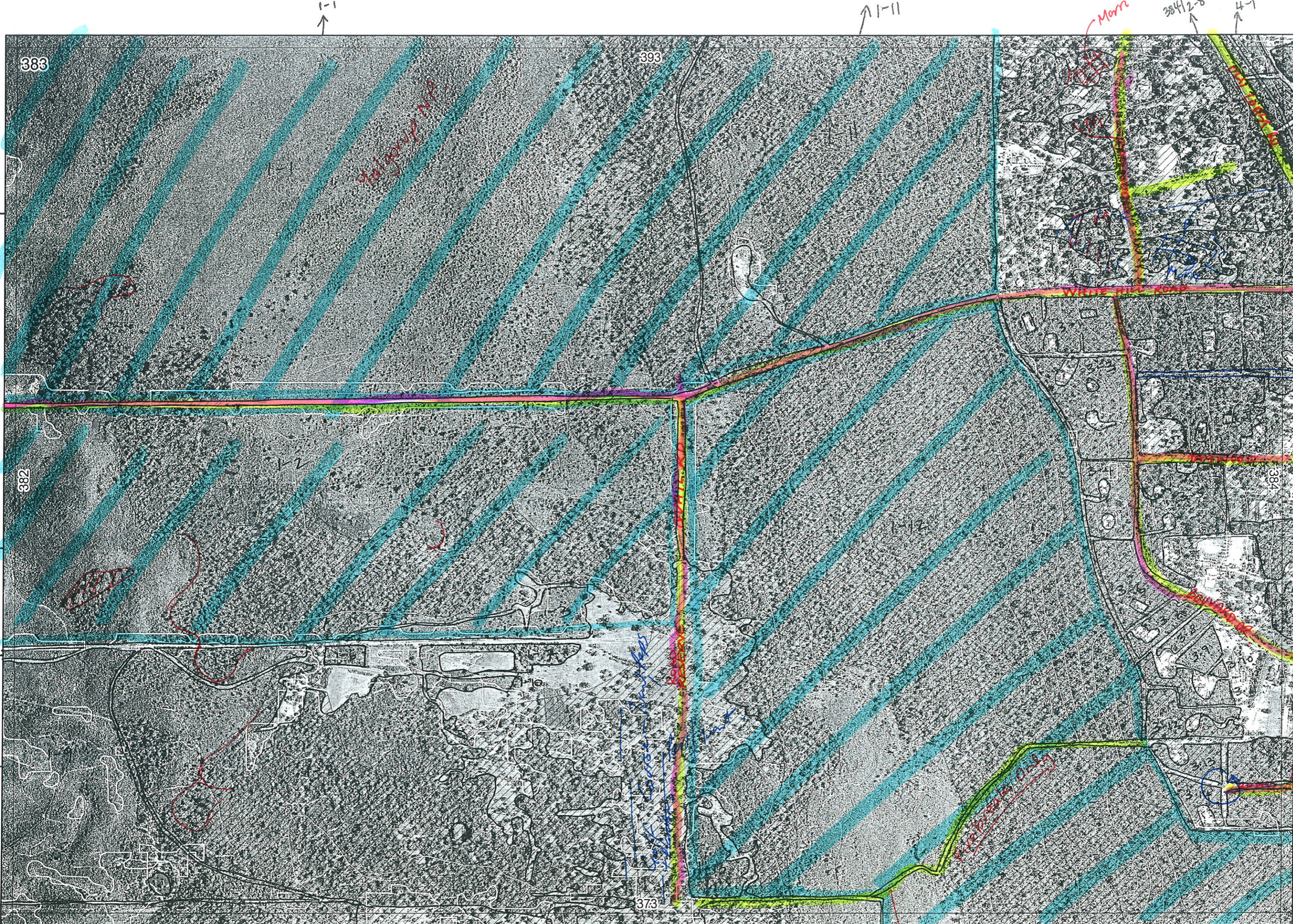
3-256

3-257

3-258

3-259

3-260



383

393

382

384

373

MORRI

Firebreak only no access

Map 382  
Leakout  
5/1/12  
photos  
1003-  
1012

384/2-2  
384/2-1  
384/2-8  
MORRI in valley  
384/2-8  
384/2-7  
384/2-7  
384/2-7  
384/2-6  
1008-1022  
384/2-6  
373/1-4

1-1

1-1

1-11

384/2-8

4-1

1-2

-4

-9

373/1-1

373/1-2

373/1-7

373/1-4

MORRI

1111 Sent to Ag p2-1

384/2-1



384/2-2  
 384/2-1  
 384/2-8  
 384/2-8  
 3-2  
 384/2-7  
 384/2-7  
 384/2-6  
 384/2-6  
 373/1-4

1-1

1-2

1-4

1-9

383

393

382

384

373

384/1-1

373/1-2

373/1-3

373/1-4

1

Map Sheet Number 383

Pre Field Recorder(s) Bomb/Karen

Field Recorder(s) B.S.K. + E.H. 30/5

Swan Bioplan Vegetation Mapping Data

R E M	R E M 2	X M A P	L I N E T Y P E	L I N E A R	M L U	U N I T S	U P L A N D ?	W E T L A N D ?	V I S I T ?	D E T A I L A r e a N a m e	V E G C O N	F i e l d d a t e  200_	O B S F r o m	Y N O T A S S	D E T V I S R E Q D	C O M M E N T S	V E G S T R U C T U R E D E N S	F C T	D O M I N A N T S			
																			1	2	3	
1	1	✓			Q/S	4 <sup>r</sup>	✓	-	Y	Yalgoup NP, Trudgen 1988	2	30/5	E	-		Plot WHILL 05 PB - <i>Lasiopetalum membranaceum</i>	1-1	S13 S14 296 27 266				
1	2	✓			Q/S	4 <sup>r</sup>	✓	-	Y	Yalgoup NP, Trudgen 1988	2	30/5	E	-		Plots WHILL 01-04 (01 & 02 on sheet 382)	1-2					
1	3				S	1	✓	-		Yalgoup NP, Trudgen 1988	4	30/5	Report Aerial E				SH		?			
1	4	✓			Q/S	3	✓	-		Enclave within Yalgoup NP, Trudgen 1988	2	30/5	Report E Aerial				Gr SH SH	S14 S13 266	Spinifex Scaevola Acacia	de. oak Melaleuca		
1	5				Q/m	3	✓	-		Trudgen 1988	3	30/5	Aerial Report				W SH		Eucalypt Acacia	Ago Flex		
1	6				S	1	✓	-		Trudgen 1988	4	7	30/5	Report			SH		Dry sess			
1	7				S	2	✓	-		Trudgen 1988	5	30/5	Report			PB - <i>Lasiopetalum membranaceum</i>	W SH W		Eucalypt Dry sess Eucalypt	Ago Flex		
1	8	✓			S	4 <sup>r</sup>	✓	-		Trudgen 1988	3	30/5	Aerial Report			Range conditions						
1	9	✓			Q/S	4 <sup>r</sup>	✓	-		Trudgen 1988	2	30/5	Aerial Report									
1	10				S	1	✓			Trudgen 1988	2	30/5	Aerial + Report					SH		Dry sess		
1	11	✓			S	2	✓			Yalgoup NP, Trudgen	2	30/5	E, Report					F F		Eucalypt Bank att	Bank att	

Sheet 1003  
1017  
B.S.K.  
1004  
282

Summary/General Comments

R E M	R E M 2	X M A P	L I N E A R	L I N E A R	M L U	U N I T S	U P L A N D ?	W E T L A N D ?	V I S I T ?	D E T A I L /	V E G C O N	F i e l d d a t e	O B S F r o m	Y N O T A S S	D E T A I L R E C O R D	C O M M E N T S	V E G S T R U C T U R E /	D E N S I T Y	F A C T	D O M I N A N T S		
																				1	2	3
1	12				S	4	✓	✓		Trudgan 1988	2		E, Aerial									
1	13				S	1	✓			Trudgan 1988	4	30/5	Edge			Tract mainly dead or nearly dead, except sided road. Lots of <del>Trudgan</del> Trudgan. Trudgan.	F low			Agofle	Aca ros	
2	1				S	2	✓		✓		0	30/5	Edge			*Nth part visited 13/07/06 Karen see (mapsheet 373 - contains G-V6) Tract on top of ridge.	F F			Eucal	Agofle	
2	2				S	2	✓				0	30/5	Edge			As per 2-1. Tract on ridge to west.	F			Eucal		
3	1				S	2	✓		✓		10-6	30/5	Edge				F			Eucmar	Banatt	
3	2				S	2	✓		✓		0-6	30/5	Edge				F			Eucal	Banatt	
3	3				S	2	✓				10-6	30/5	Edge				F			Eucmar	Banatt	
3	4				S	1	✓				G	30/5	E				F			Eucal	Euc mar	Banatt
3	5				S	1	✓				0-6	30/5	Edge				F			Eucmar	Eucal	
3	6				S	1	✓				10-6						F			Eucal	Eucmar	Banatt
3	7				S	1	✓				"						"			"	"	"
3	8				S	1	✓				"						"			"	"	"
3	9				S	1	✓				"						"			"	"	"
3	10				S	1	✓				"						"			"	"	"
3	11				S	1	✓				"						"			"	"	"

Summary/General Comments

