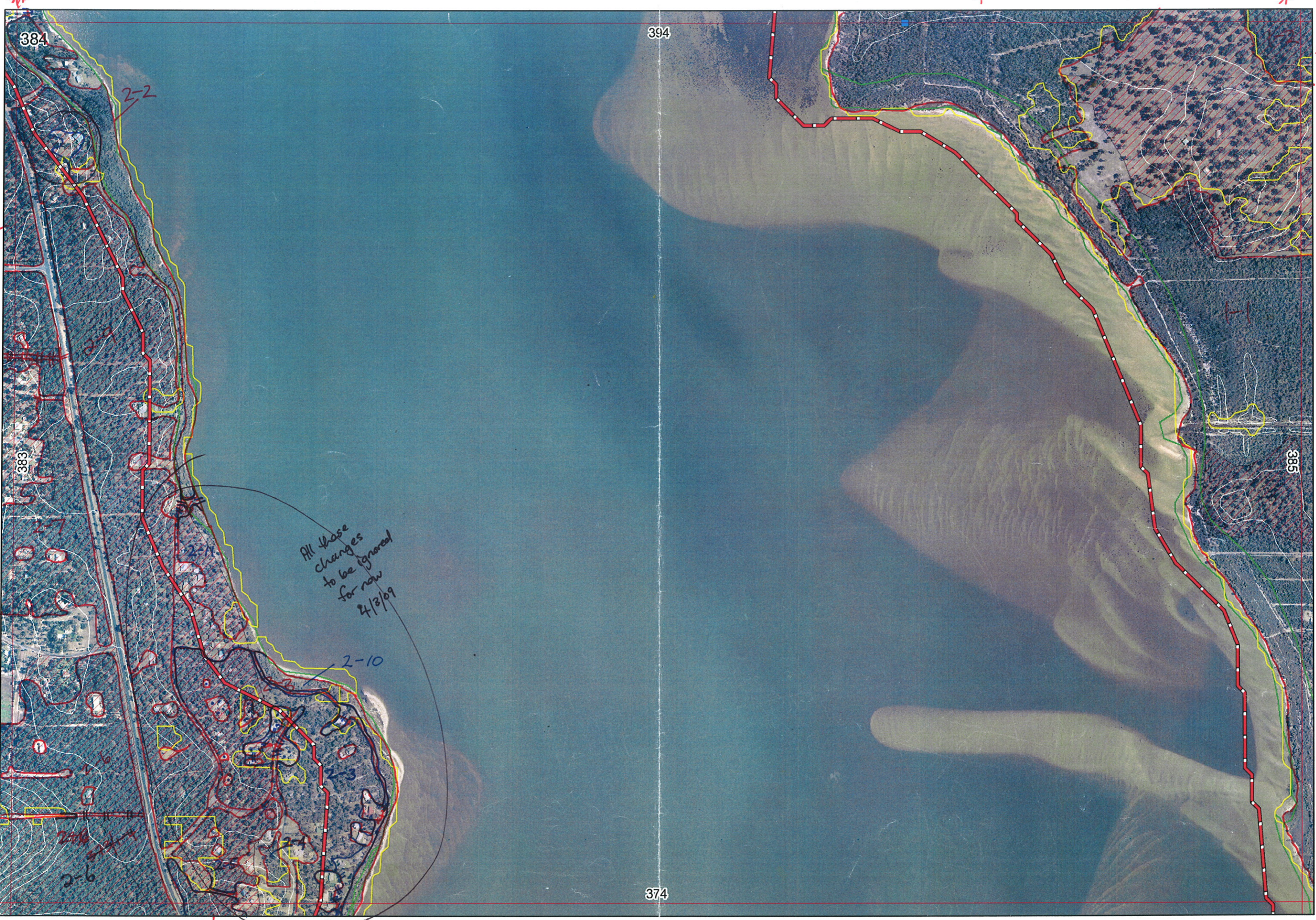


Ag



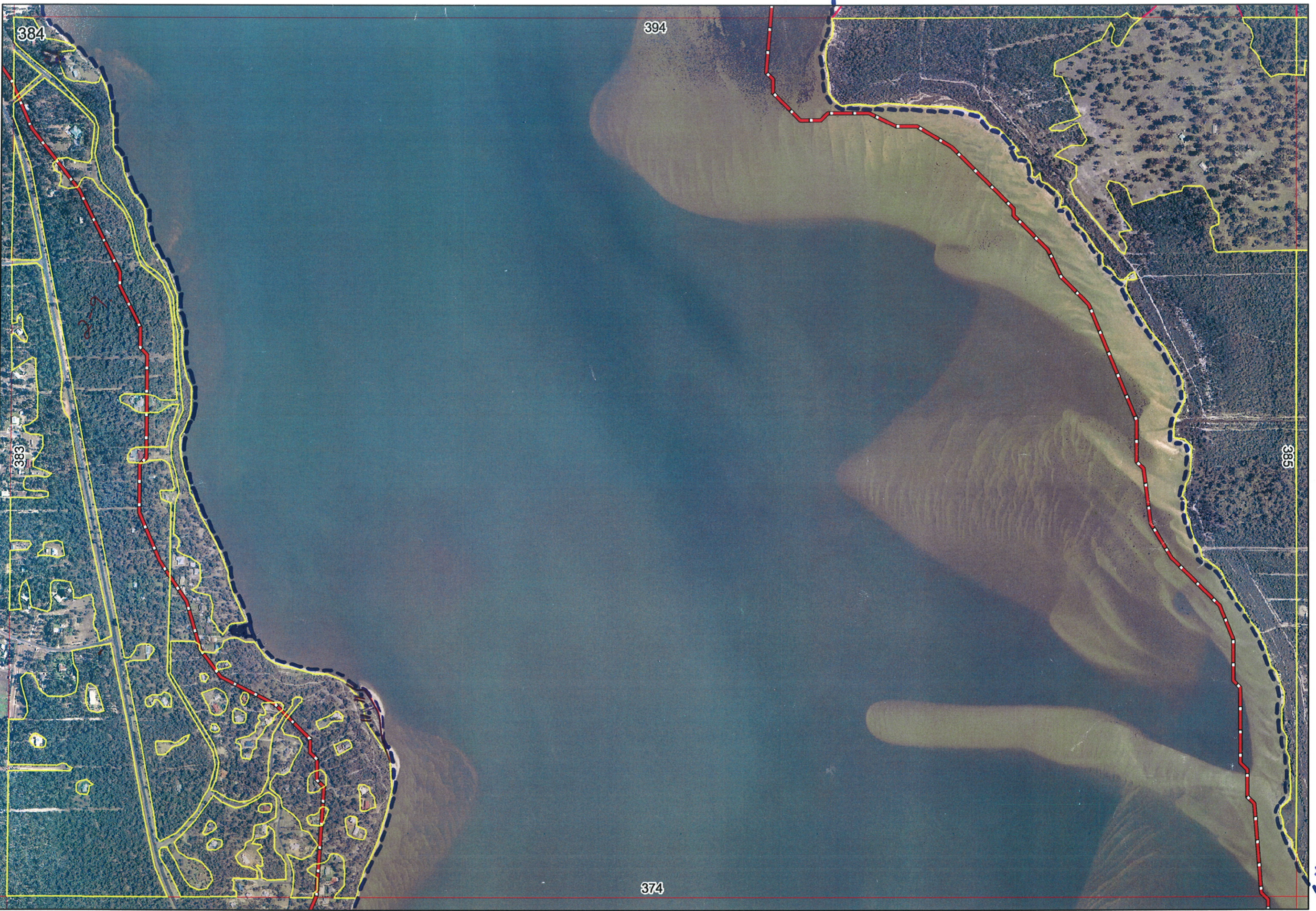
All these changes
to be ignored
for now
4/2/09

CEEA

EEEA

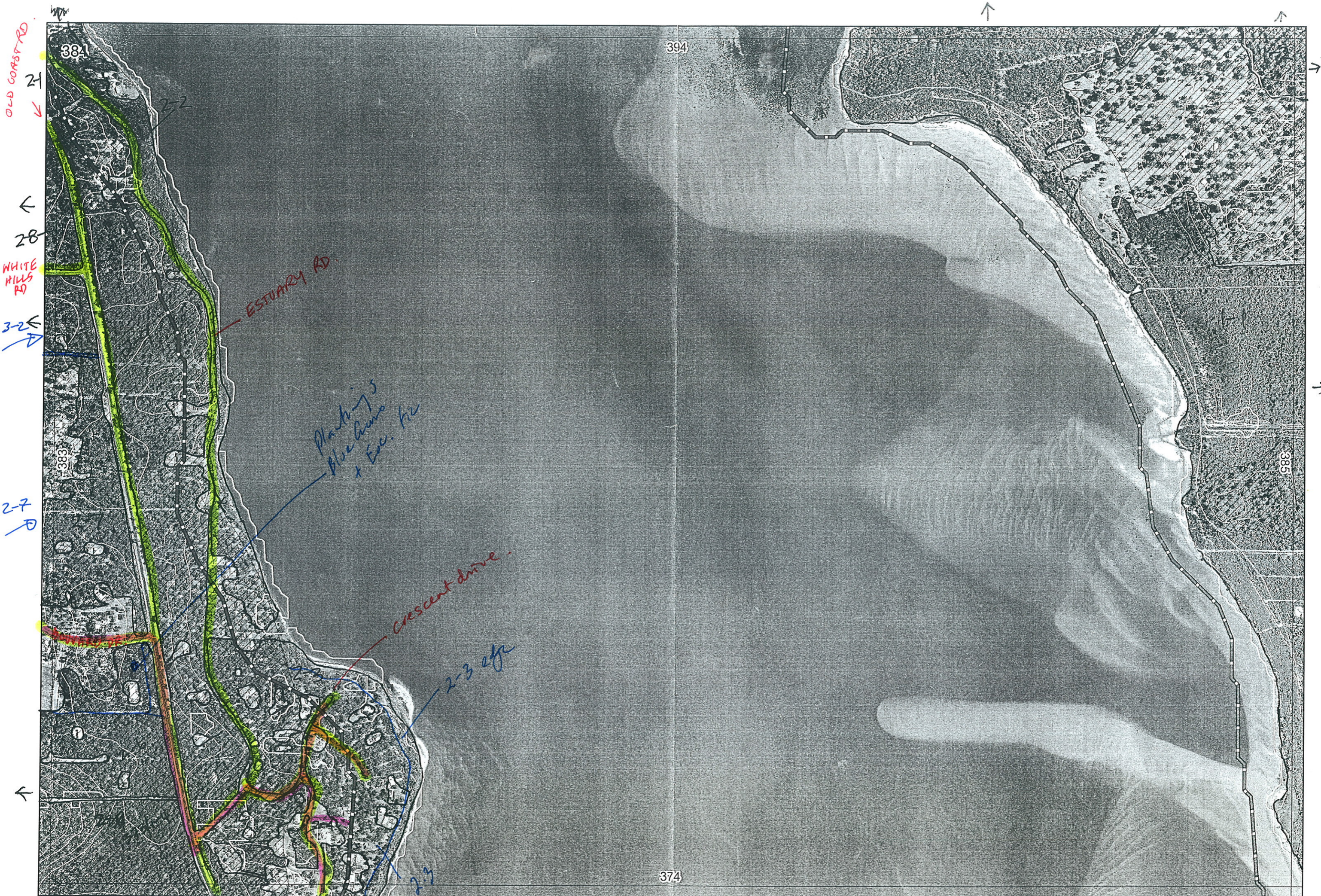
STUDY BOUNDARY

STUDY BOUNDARY



STUDY BOUNDARY

STUDY BOUNDARY



OLD COAST RD.
2-1

2-8
WHITE HILLS RD.

3-2

2-7

←

ESTUARY RD.

Parking
Blue house
+ Exc. fee

Crescent drive

2-3 edge

381

394

383

385

374

273/1-4

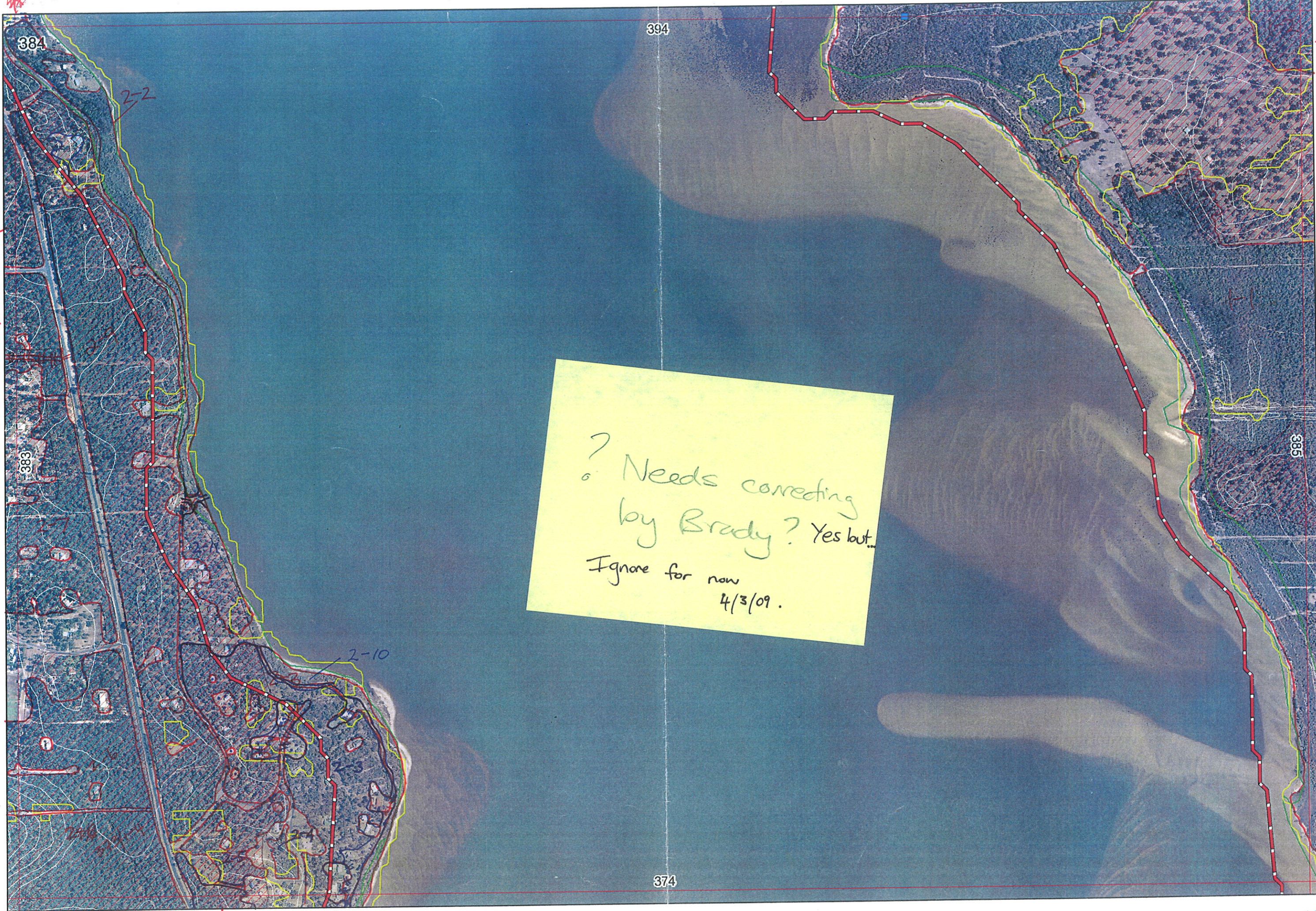
374/2-1

2-3

7 parking

Photos clearing

17 Parkway



? Needs correcting
by Brady? Yes but...
Ignore for now
4/3/09.

Ag

CEEA

385

CEEA

384

394

383

374

2-2

2-10

2-3

↓

↓ 2-1

↓ 2-2

↑

↑

→

→

→

Sheet	384
Drawn	Karen 27/2/06
Checked	✓ no changes to datasheet
Drawn	

BK/EH 30/5 Aerial Int BG/BK
SM/BK 8/8/05 Swan Bioplan Vegetation Mapping Data

Field Recorder(s)		DETAIL/ Area Name	VEG CON	Field date	OBS From	YNOTASS	DET VIS REQ	COMMENTS	VEG STRUC/ DENS	FCT	DOMINANTS		
				200_							1	2	3
		MEAL02		30/5	edge		N	Bangra over shrubland Some scattered Eucgorn	F		Eucmar	Corcal	Banatt
		MEAL01		30/5				Euc gom Euc morg, Euc cal, ban att Kun glab Euc rudis	F		Eucgom		
								Euc gom Bank att Mel rhaph	Sar.				
									Sedg.				
		MEAL01		30/5	Edge	no access	N	Part of 1-1.	F		Eucmar Eucgom	Corcal	Banatt
			D-G	30/5	Edge				F		Euc gom		
			VG-EX	30/5	E/W		N	Mel rhap at edge estuary Variable death to both over Jun. kra, Fic. nod, Gch. tri	F		Euc cal Mel rhap		
				30/5					F		Euc rud	Mel rhap	
		Reserve for much length	D	30/5	Edge		N	Best condition and greatest area on this sheet Wart present over sedge (Jun. kra, Beasp, Gahtri, Fic nod, Lepsp)	F	17?	Eucgom Eucrud	Euc rudis Mel rhaph	Mel rhap
			VG	30/5	E		N	Sedge - Lepid long	F		Eucrud		
			D	30/5	E		N		F		Euc gom	Ajo Flex	
				30/5					F		Euc cal	Ajo Flex	
			E	30/5	E		N		F		Eucmar	Euc cal	Banatt
			D-G	30/5	Edge		N		F		Euc cal		
			D	30/5	E		N		F		Euc cal		
			D-G	30/5	E		N		F		Euc gom Euc gom	Ajo Flex	
			VG-G	30/5	E		N	Point Repose Reserve 4417 WRC P384-2-3-944	F		Eucmar	Ajo Flex	
			D	30/5	E		N		F		Mel rhaph		
									F		Euc rud	Mel rhap	
									W		Euc rud		
									W		Mel rhap		

Plot	1	2	3	4	5	6	7	8	9	10	11
Area			Estuarine							Estuarine	Est
Observer			S/M							S/M	S/M
Notes											

1	2	3	4	5	6	7	8	9	10	11
✓	✓	N	✓	✓	✓	✓	✓	✓	N	N
		Estuarine							Estuarine	Est

Summary/General Comments
2-2 Suitable for plots if needed, Reference Point

Timbrellers

Atlas MAP SHEET 176 NATURAL AREA MAPPING SHEET REC PRE-FIELD SM

REC FIELD 8W4BK entered 23/1/04

DoE BJ Keighery 8/2005

Map for this data at 395.

CA

46 REMNANT NO

VEGETATION CONDITION

VEGETATION/ PREVIOUS INFO

SIM REM

DETAIL

25
2

395-3-1
384-1-1

Minor Ecological Batt 395 over subland photo pt
Same w/ scattered E.gom

See New Data Sheet

NOTES

R E M	R E M 2	X M A P	L I N E T Y P E	L I N E A R	M L U	U N I T S	U P L A N D ?	W E T L A N D ?	V I S I T ?	D E T A I L A r e a N a m e	V E G C O N	F i e l d d a t e 2 0 0 _	O B S F r o m	Y N O T A S S	D E T A I L R E Q D	C O M M E N T S	V E G S T R U C T U R E D E N S	F C T	D O M I N A N T S			
																			1	2	3	
1	1	✓			EST S	4	✓	✓		MEAL02 Plot MEAL01 CS2 Mealup Point Nature Reserve McLarty Nature Reserve	VG- CD	30/5	edge → within		N	+ Bangra over shrubland Some scattered Eucgom Euc gom Euc. morg, Euc cal, ban att Kun glab Euc rudis Euc gom bank att Mel rhaph	F F F F		Kun ^{gla} Eucmar Regcil Eucgom	Banatt Corcal Hypang	Eucmar Banatt Mel cut	
1	2	✓			EST S	1	✓			McLarty 01 CS2			no access		N	Part of 1-1.	F		Eucmar Eucgom	Corcal	Banatt	
2	1	✓			S	2	✓				D-G	30/5	Edge				F		Euc gom			
2	2	N	Estuarine		M	2	-	✓	Y		VG- EX	30/5	E/W			7Y	Mel rhap at edge estuary Variable deaths both over Jun. kra, Fic. nod, Gch. tri	F F		Euc cal Mel rhap Euc rud	Mel rhap	
2	3	✓	Estuarine	✓	S/M	3	✓	✓	✓	Reserve for much length	D	30/5 20/4 06	Edge		N	2-2 Best condition and greatest area on this sheet Tuart present over sedge (Jun Beasp, Gahtri, Frenod, Lepsp)	F F F	17?	Euc gom Eucrud Euc gom	Euc rudis Mel rhaph Ajo flex	Melrhap	
2	4					1	-	✓	Y		VG	30/5 06	E		N	Sedge - Lepid long	F		Eucrud			
2	5	✓			S	2	✓	✓	Y		D	30/5	E		N		F		Euc gom	Ajo flex		
2	6	✓				1	✓				E	30/5 06	E		N		F		Euc cal Eucmar	Ajo flex Eucal	Banatt	
2	7	✓				1	✓				D-G	30/5 06	Edge		N		F		Eucal			
2	8	✓				2	✓				D	30/5 06	E		N		F		Eucal			
2	9					2	✓				D-G	30/5 06	E		N		F F		Eucgom Eucgom Eucmar	Ajo flex Agofle		
2	10	N	Estuarine	Y	S/M	2		✓	Y		VG- G	30/5	E		N	Point Repose Reserve 4417 WRC P384-2-3-944	F		Mel rhaph Euc rud	Mel rhap		
2	11	N	Est	Y	S/M	2					D	30/5	E		N		F W W		Euc rud Eucrud Melrhaph			

Summary/General Comments
2-2 Suitable for plots if needed, Reference Point