

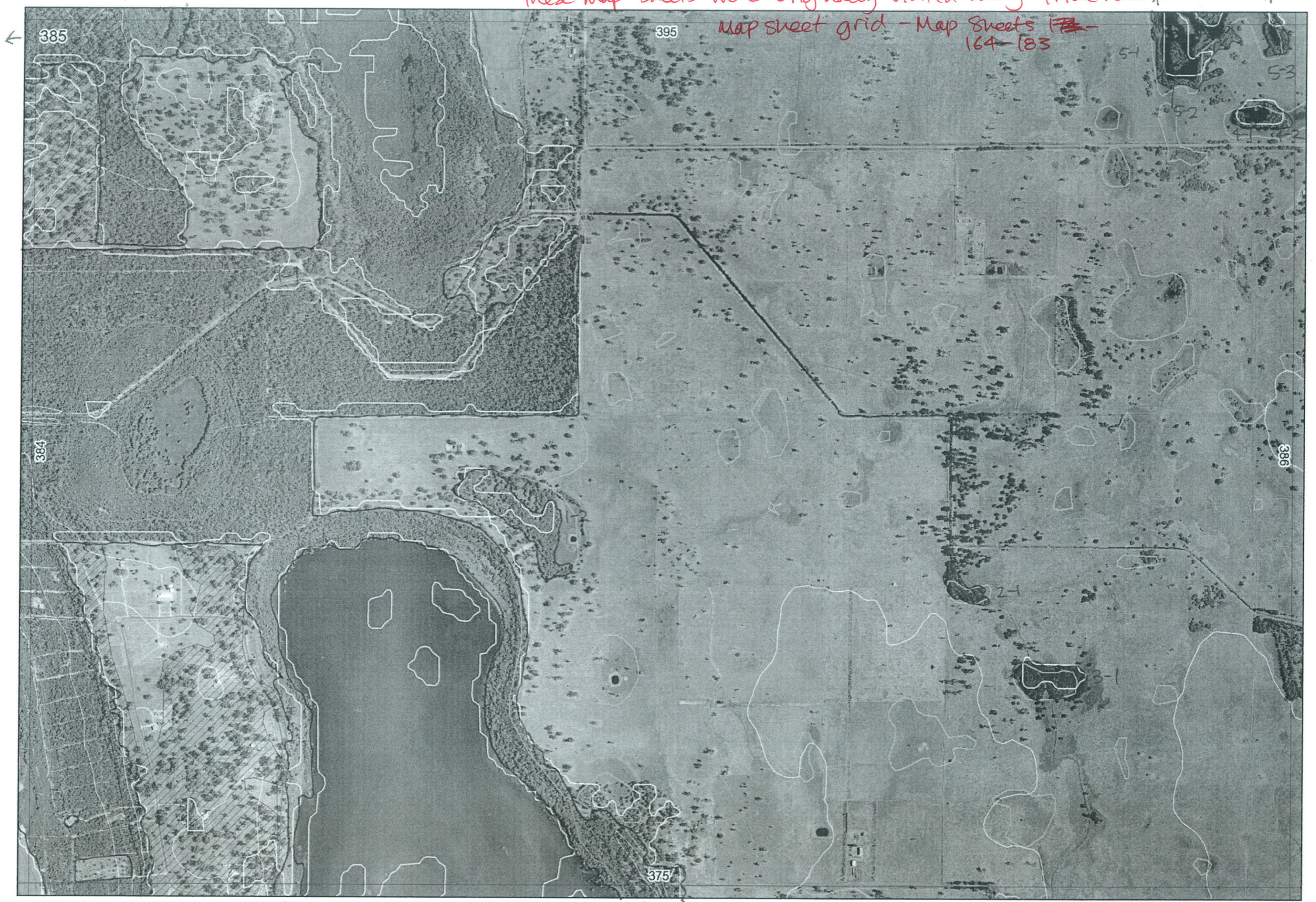
Ag



EEEA

these map sheets were originally visited using trial run

map sheet grid - Map Sheets ~~171~~ - 164 - 183



385

395

384

375

386

51

53

52

2-1

3-1





Map Sheet
384

166

385-1-1

23

①

②



Lake Mealyup road reserve

Tuart Ridge
6340-
6377

634
6338

6340
6377

166

6379
6318
6374



Birch Dr

← Mills Rd →



SWAN BIOPLAN MAP SERIES
MAPSHEET 166

TERRESTRIAL ECOSYSTEMS BRANCH
January 24, 2005

 route walked
 route driven

9/8/05

2 ✓



385

395

384

983

375

Study Boundary



R E M	RE M2	XM AP	LIN TYPE	L I N E A R	M L U	U N I T S	U P L A N D ?	W E T L A N D ?	V I S I T ?	DETAIL/ Area Name	VEG CON	Field date 200_	OBS From	YNOTASS	D E T V I S R E Q D	COMMENTS	VEG STRUC/ DENS	FCT	DOMINANTS		
																			1	2	3
1	1	Y		N	S B/P	4	Y	Y		lake McCLARTON NR CS2	VG	9/8 05	within		McCLARTON Ivart Agonis	F		Kunein	Banath	ewcmar	
											CD		within			F		Regal	Hypang	Melwt	
Misnumbered - should be 384-1-1, Combine entries w 384-1-1																					
1	2	N		N	B/P	1		Y				9/8	aerial	- w-Melwp.		F					
2	1	N		N	B/P	1		Y				9/8	aerial	w-Melwp.		F					
3	1	N		N	B/P	1		Y				9/8	aerial	w-Melwp.		F					
4	1	N		N	B/P	1		Y				9/8	aerial	w-Melwp.		F					
4-2 become 4-1																					
5	1	Y		N	B/P	1		Y				9/8	aerial	w-Melwp.		F					
5	2	N		N	B/P	1		Y				9/8	aerial	w-Melwp.		F					
5	3	✓		N	B/P	1		Y					aerial	w-Melwp.							

Summary/General Comments

Entered 10/1/06.

DoE BJ Keighery 8/2005

Map 4 this data @ 386.

SCP NATURAL AREA MAPPING SHEET

MAP SHEET 177

REC PRE-FIELD SM

REC FIELD SM BK

REMNANT NO	VEGETATION CONDITION	VEGETATION/ PREVIOUS INFO	SIM REM	DETAIL
11	CD	low forest Mel rap / E.rodia SWR by scattered E.cal E.rodia	396-3-1	
12	in pasture	D	396-3-4	
20			396-3-3	
10			396-2-1	
19		E.cal rodia E.mor B.gra B.aff forest no understorey	396-5-1	
13, 14, 15, 22	CD Typha beds	Typha B.aff Mel rap } all linked by open water 8/8/05	396-4-1 " 386-1-2 385-4-1/4-2	
21 +	CD	E.cal Mel rap M.ter? M.sp.		
16	CD	same as 21	386-2-1	
6/7/8/9	CD	Mel rap lots of birds in all wetlands swans/mtn ducks/7. ibis cact 5395-9-1 7 Mel ter + E.rodia wrens		
5	CD	6 grouped w all wetlands Mel rap		
1+14	CD	E.rodia some Mel rap	395-6-3/6-4	
2	CD	2- Mel rap.	396-6-2	
3	CD	Mel rap	395-14-1	
17, 18 non 26	D-CD	Mel rap lep lon under Mel rap. ? cant find now champagne coming	386-3-1 and 3-2	
24	D-G-CD	Ecal Banksia wetland	385-1-1	

NOTES

MAP HELD IN 375
(For this data)

DoE BJ Keighery 8/2005

CP NATURAL AREA MAPPING SHEET
MAP SHEET 167 REC PRE-FIELD

REC FIELD

REMNANT NO	VEGETATION CONDITION	VEGETATION/ PREVIOUS INFO	SIM REM	DETAIL
4	CD 375-6-2	Agonis + Marri over pasture		
5	? CD 385-2-1	Possibly Mel rap too far away to see (in pasture)		
6	? CD 385-3-1	Mel ? rap (in pasture)		
8 new	D? 375-5-1	Euc cal Euc mor Scatt Mel pre forest-woodland over Xan pre		
a new	375-7-1 and 7-2 Q- D in places	Euc cal + Mel ^{pre} + Kunzea over sedges Ban lit		
7	CD 385-41 and 42	removed & check Map Sheet 385 and if digitised delete.		

entered 9/1/06.

NOTES