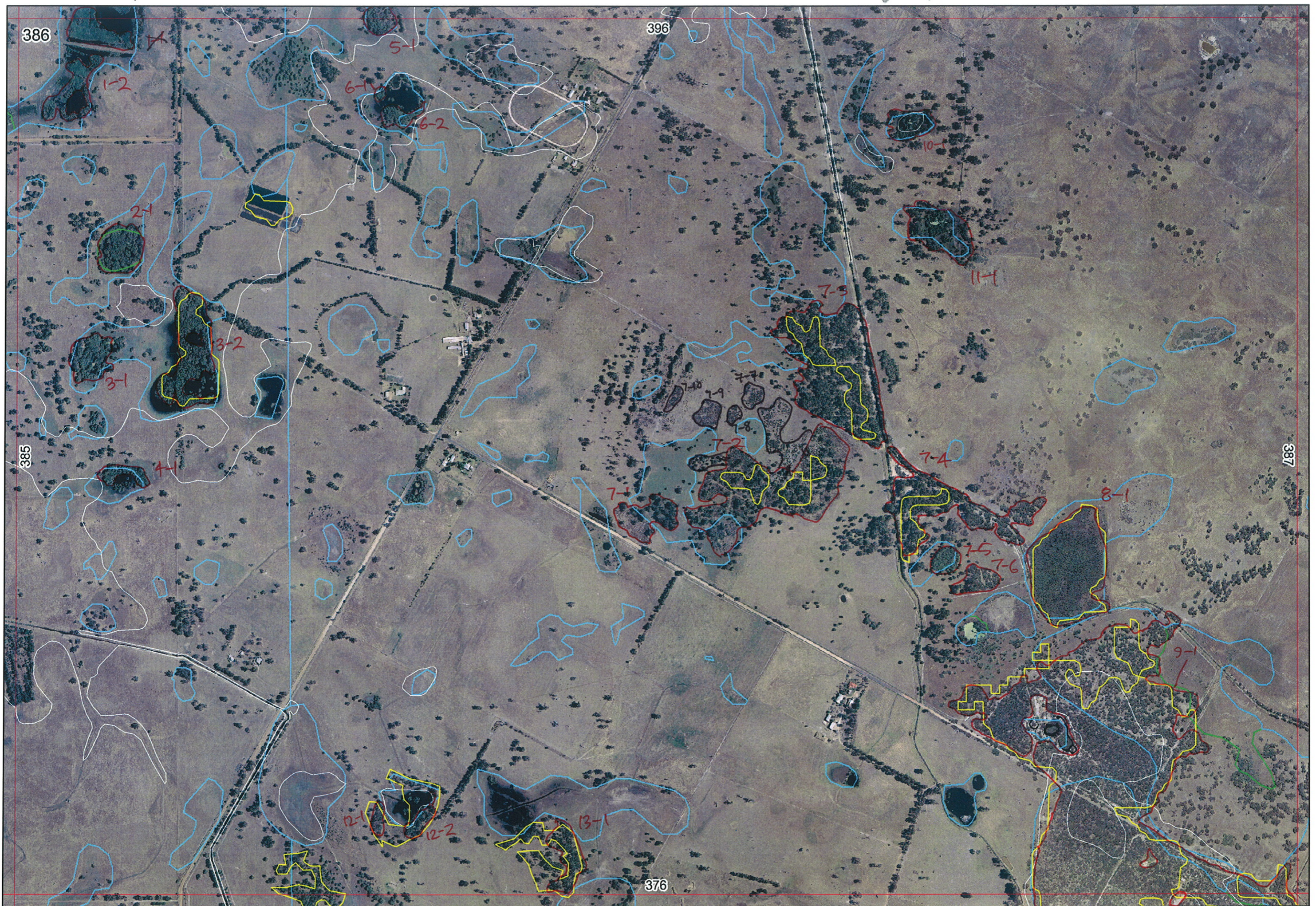


↑ 396/4-1

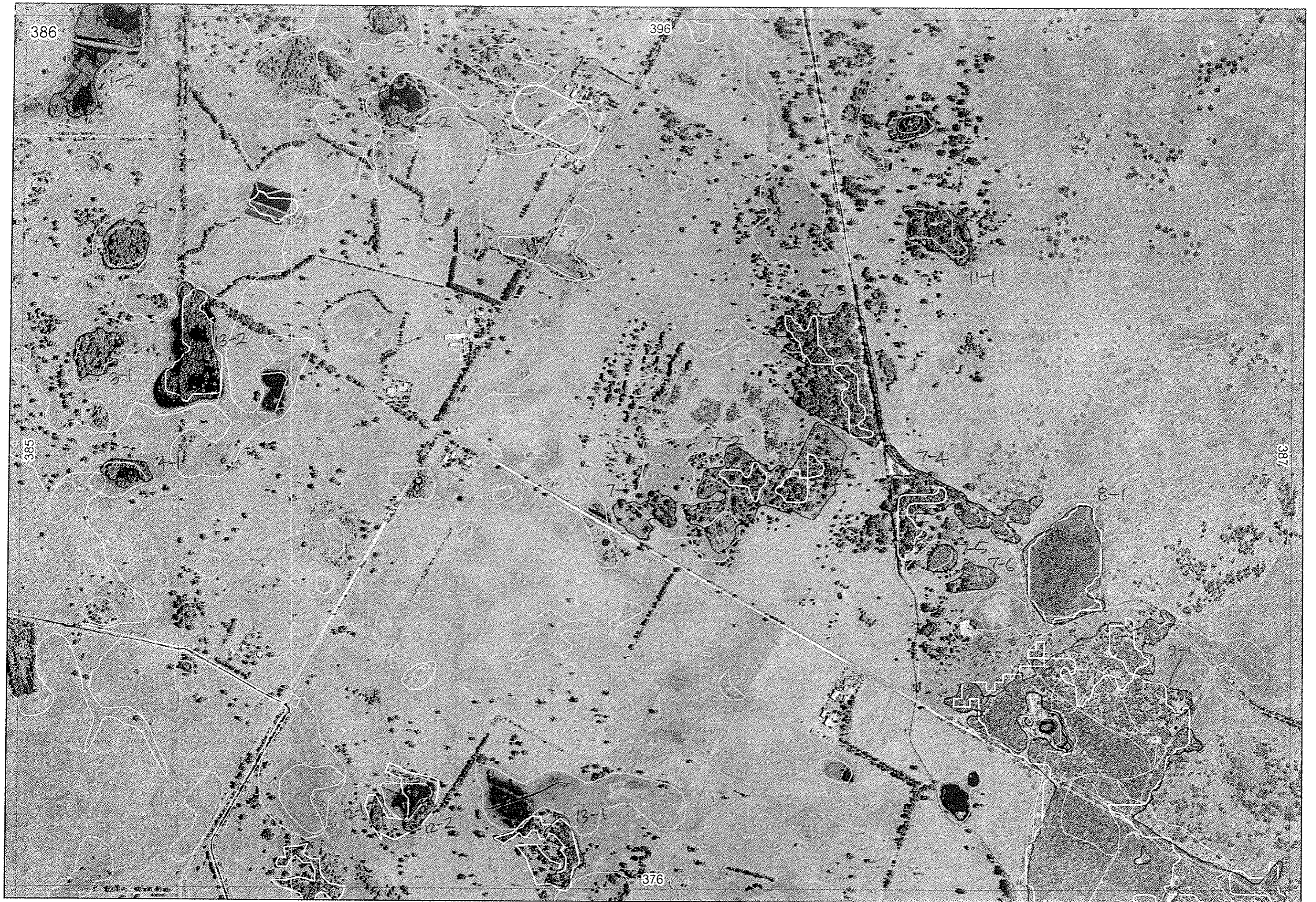
↑

Aj mapped



↓

EEEA.



Map for this data at 376.

	Rural channel	PATCH Inspect.	DATE PHOTO	Completely Degraded: Description Sig species.	Other
	376-2-1	✓	5/02		
C 2	376-2-2	✓	5/02	Wetland	
B 3	376-7-2	✓	5/02	Wetland	
(4)	376-9-1 and 377-9-1	✓	3718 5/02	Upland/Wetland - check various conditions Ex/V/S/G/D	} With 12 track/rail passable middle
I (5)	386-9-1	✓	5/02	Check contiguous &	
H 6	386-8-1	✓		Wetland. Mel rhaph 790% cov ? CD	
G 7	386-7-4	✓	5/02	Number associated patches Merri over tank	
F 8	386-7-2	✓	5/02	Euc radis Mpress edges Wetland/UP CD/D + Er scattered centre Mel text Mel pretifolia, Mel rhaph (leapast) patches Marric fern, Laurel junca	
E 9	386-7-1	✓	5/02	Marric, Euc radis + Lepid long Mel p Wetland	
G 10	✓		5/02	Plantings.	Entered. 9/1/06.
A 11		✓	5/02		
(12)	Drain Road plus ? not mapped check MapSheet 377.	✓	5/02 3713/17	D/G/VG Vim/Vine. Mel vim, lakemore, unc bred rhaph, dute - Ac/psia var bred over chance, Chalk, Meebsp Pogonolepis claypan = FCT 7/8/	32° 42.592' 115° 49.459' } Mel later

DRAIN

MAP STREET 178

LINEAR

PATCH

VIEW

DATE
PHOTO

Details

Map for his data @ 396.

1

386-7-3

✓

Upland

2

386-11-1

Wetland

4

Have a look on Map Sheet 396

3

396-9-1

✓

5/02
3719

Wetland. Mel rhyph ? CD
Series of patches same summer.
? Old lot, fenced off, never house

MAP STREET 179

1

✓

Wetland ✓
Mel rhyph, scall E. ruins edge CD
grown in paddock.

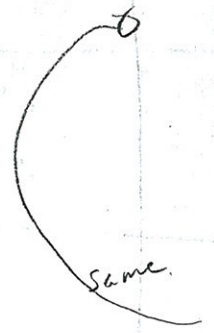
2

✓

Upland

3

✓
Farm



4

✓

Wetland

5

✓

Wetland

6

✓

Upland

Entered 10/1/06.

Entered 10/1/06.

DoE BJ Keighery 8/2005

SCP NATURAL AREA MAPPING SHEET

MAP SHEET 177

REC PRE-FIELD SM

REC FIELD SM BK

REMNANT NO	VEGETATION CONDITION	VEGETATION/ PREVIOUS INFO	SIM REM	DETAIL
11	CD	low forest Mel rap / E.rodia SWR by scattered E.cal E.rodia	396-3-1	
12	in pasture		396-3-4	
20			396-3-3	
10			396-2-1	
19			396-5-1	
13, 14, 15, 16, 22	CD Typha beds	Typosi B. litt Mel rap } all linked by open water 8/8/05	396-4-1	
21+	CD	E.cal Mel rap M.ter? M.sp.		
16	CD	same as 21	386-2-1	
6, 7, 8, 9	CD	Mel rap lots of birds in all wetlands swans / wrens / m. dudleyi / 110's coot's		395-9-1
		7 Mel ter + E.rodia		
		6 grouped in all wetlands		
5	CD	Mel rap		
1+ 4	CD	E.rodia some Mel rap	305-6-3/6-4	
2	CD	2- Mel rap.	396-6-2	
3	CD	Mel rap	395-14-1	
17, 18		Mel rap	386-3-1 and 3-2	
VEN 26	D-CD	lep lon under Mel rap. ? cant find now champagne coming		
24	D-G-CD	Ecal Banksia wetland	385-1-1	

NOTES

Blank area for notes.

SCP NATURAL AREA MAPPING SHEET

DoE BJ Keighery 8/2005

MAP SHEET 177

REC PRE-FIELD SAC

REC FIELD

REMNANT NO	REMNANT GROUPED	NON-LINEAR	LINEAR PLUS	NO WETLAND (PARTIAL)	% WETLAND VEG	FIELD YES/NO	FIELD DATE	PHOTO NO	LOCAT. OBSERV.
1		x	channel	1	10		↑		
2		x	channel	1	10				
3		✓		1	10				
4		x	channel/dampt	1	10				
5		✓		1	2				
6		✓		1	10				
7		✓		1	10				
8		✓		0	0				
9		✓		0	0				
10		✓		1	10				
11	}	✓		0	10		↓		
12		✓		0	10				
13		✓		0	10				
14		✓		0	10				
15	}	✓		0	10				
22		✓		0	10				
16	}	✓		1	10				
17		✓		0	10				
18	}	✓		0	10				
19		✓		0	0				
20		✓		0	10				
21		✓		0	0				
23	}	✓		0	0				
24		✓		0	0				
25		✓		0	1				

8/8/05

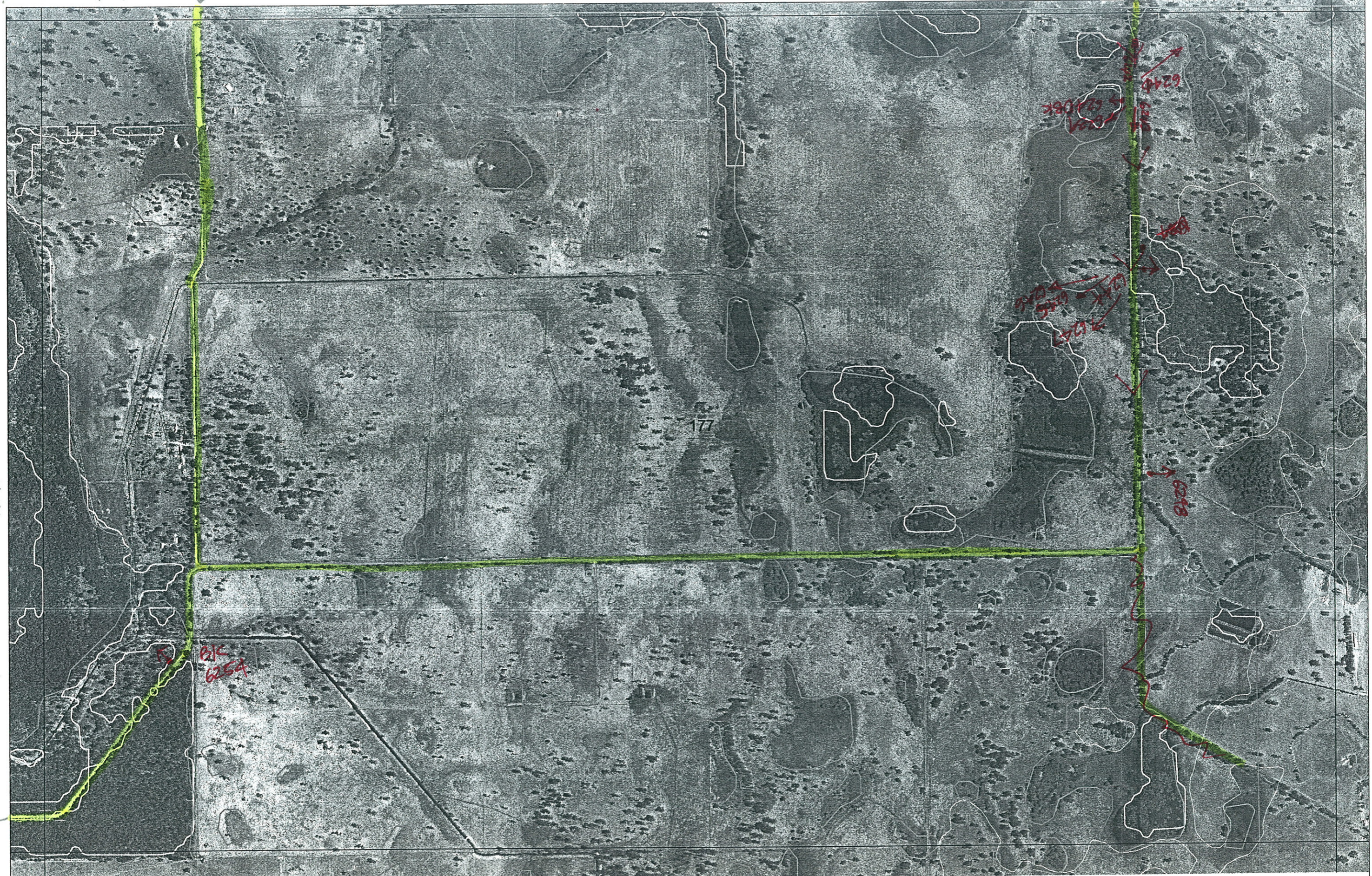
↓

NOTES

Lake Meallup
NR

Turn around.

Lake Meallup
North Rd.



 route taken



2 ✓ * *

* ↓ middle



*

* ↑ middle

*

R E M	R E M 2	X M A P	L I N T Y P E	L I N E A R	M L U	U N I T S	U P L A N D ?	W E T L A N D ?	V I S I T ?	D E T A I L / A r e a N a m e	V E G C O N	F i e l d d a t e 200_	O B S F r o m	Y N O T A S S	D E T A I L / V I S I T R E Q D	C O M M E N T S	V E G S T R U C / D E N S	F C T	D O M I N A N T S		
																			1	2	3
1	1	Y		N	B/p	1	N	Y		= 396-4-1	CD 8/8	edge				Included for fauna/habitat value	W		Melrap	Banlit	Typoni
1	2	N		N	B/p	1	"	Y			CD 8/8	edge				" " " "	W		Eucal Melra	Melra Banlit	Melra? Typoni
2	1	N		N	B/p	1	"	Y			CD	- aerial				" " " "	F		Eucal	Melra	Melra?
3	1	N		N	B/p	1	"	Y			CD 8/8	edge				" " " "	F		Melra		
3	2	N		N	B/p	1	"	Y			CD 8/8	edge				" " " "	F		Melra		
4	1	N		N	B/p	1	"	Y			CD	- aerial				" " " "	F		Melra		
5	1	Y		N	B/p	1	"	Y			CD	- aerial				" " " "	F		Melra		
6	1	N		N	B/p	1	"	Y			CD	- aerial				" " " "	F		Melra		
6	2	N		N	B/p	1	"	Y			CD	- aerial				Melra " " "	F		Melra		
7	1	N		N	S/p	2	Y	Y			CD 5/2	edge				Melra	W		Eucal	Eucal	Lepton
7	2	N		N	B/p	1	Y	Y			CD 5/2	edge				Melra, Melra, Banjon	W		Melra Eucal	Melra	
7	3	N		N	B/p	1	Y	N			CD 5/2	edge				" " " "	F		Eucal	Xan sp	
7	4	N		N	B/p	1	Y	N			CD 5/2	edge				" " " "	F		Eucal	Xan sp	
7	5	N		N	B/p	1	N	Y			CD	- aerial				" " " "	F		Mel sp		
7	6	N		N	B/p	1	Y	N			CD	- aerial				" " " "	F		Eucal		
8	1	N		N	B/p	1	N	Y			CD 5/2	edge				" " " "	SH	NA	Mel species		
9	1	Y		N	B/p	2	Y	Y			VG/G 3/5	5/2 edge				Patches of Ex & D also	W		Banlit		
																	SH		Kunz glob.		

Summary/General Comments

Map Sheet Number 386

Pre Field Recorder(s) SM

Field Recorder(s) SM BK

Swan Bioplan Vegetation Mapping Data

R E M	RE M2	XM AP	LIN TYPE	L I N E A R	M L U	U N I T S	U P L A N D ?	W E T L A N D ?	V I S I T ?	DETAIL/ Area Name	VEG CON	Field date 200_	OBS From	YNOTASS	D E T V I S R E Q D	COMMENTS	VEG STRUC/ DENS	FCT	DOMINANTS			
																			1	2	3	
10	1	N		N	B/p	1		Y			CD/D	5/02 aerial										
11	1	N		N	B/p	1		Y			CD/D	5/02 edge										
12	1	N		N	B/p	1		Y			CD/D	- aerial										
12	2	N		N	B/p	1		Y			CD/D	- aerial										
13	1	N		N	B/p	1	Y	X			CD/D	- aerial										
7	7	N		N	B/p	1	Y				CD/D	- aerial					SH					
7	8	N		N	B/p	1	Y				CD/D	- "					"					
7	9	N		N	B/p	1	Y				CD/D	- "					"					
7	10	N		N	B/p	1	Y				CD/D	- "					"					

Summary/General Comments