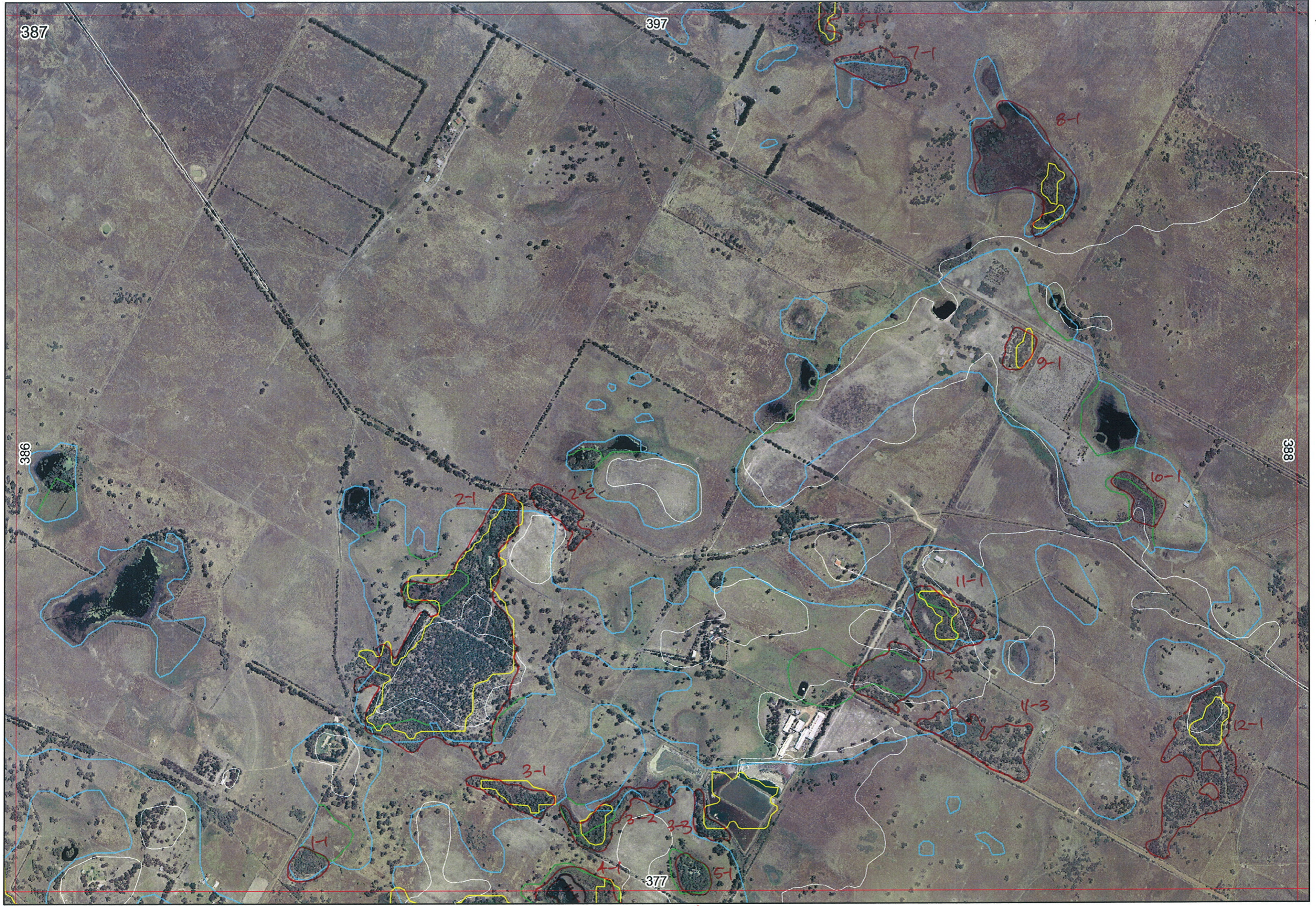


Ag Mapped

9



EEEA

387

397

386

388

377



2 ✓



387

397

386

388

377

Remove walls →

R E M	R E M 2	X M A P	L I N E T Y P E	L I N E A R	M L U	U N I T S	U P L A N D ?	W E T L A N D ?	V I S I T ?	D E T A I L A r e a N a m e	V E G C O N	F i e l d d a t e  200_	O B S F r o m	Y N O T A S S	D E T E R M I N E D ?	C O M M E N T S	V E G S T R U C / D E N S	F C T	D O M I N A N T S		
																			1	2	3
1	1	N		N	B/p	<del>1</del> X	<del>N</del> X	Y			CO/D	5/2	aerial		N		F		Mel sp		
2	1	N		N	B/p	2	X	Y			D/G	5/2	aerial		N		F		Euc cal		
2	2	N		N	B/p	1	N	Y			D/CO	5/2	aerial		N		F		Mel sp		
3	1	N	channel	Y	B/p	<del>1</del> X	<del>N</del> X	Y			CO/D	5/2	aerial		N		F		Mel sp		
3	2	N	channel	Y	B/p	<del>1</del> X	<del>N</del> X	Y			CO/D	5/2	aerial		N		W		Mel sp		
3	3	N	channel	Y	B/p	1	N	Y			CO/D	5/2	aerial		N		F		Mel sp		
4	1	Y		N	B/p	1	N	Y			CO/D	5/2	aerial		N		M		?		
5	1	Y		N	B/p	1	N	Y			CO/D	5/2	aerial		N		F		Mel sp		
6	1	Y		N	B/p	1	N	Y			CO/D	5/2	aerial		N		W		Mel sp		
7	1	N		N	B/p	<del>1</del> X	<del>N</del> X	Y			CO/D	5/2	aerial		N		W		Mel sp		
8	1	N		N	B/p	1	N	Y			CO/D	5/2	aerial		N		W		Mel sp		
9	1	N		N	B/p	1	N	Y			CO/D	5/2	aerial		N		W		?		
10	1	N		N	B/p	1	N	Y			CO/D	5/2	aerial		N		M		?		
11	1	N		N	B/p	2	Y	Y			D	5/2	edge		N	Lepton Melpre Patches of G+CD	F		Euccal	Xansp	
11	2	N		N	B/p	2	Y	Y			D	5/2	edge		N	Patches of G+CD	F		Melrha	Junsp	Bausp
11	3	N		N	B/p	<del>2</del> X	<del>Y</del> X	Y			CO/D	5/2	edge		N		W		Mel rha	Jun sp	Bausp
12	1	N		N	B/p	<del>2</del> X	<del>Y</del> X	Y			CO/D	5/2	edge		N	Melat, Ghatri, Meluni Lepton	F		Mel rha		
																	F		Euccal		

Summary/General Comments

O=Priority	Linear	Rekl	View	Date Photo	Notes
167					
A 1		✓		5/02	Upland/Wetland 387-1-1 and 2-1
A 2		✓		5/02	Wetland 387-1-1 and 2-1
3	✓			5/02	? Wetland edge, linear 387-3-1 and 3-2
A 4				5/02	Upland/Wetland 387-1-1
A 5				5/02	Upland/Wetland Rises Merri over bank occ Kingia 377-5-1 W Mel rhyph over seagrass (Lopid long), Junco patches. fringing Euc rivis, M. prcis and
A 6		✓		5/02	Upland/Wetland NO D/CD Merri over Xanth, Dusy brown, Hypersul. 377-8-1 D/CD/occ good to 2V5 5-2
7				5/02	wetland 377-6-1
8				5/02	wetland 377-7-1
9				5/02	Wetland 387-5-1
10				5/02	Wetland, central pond, veg at edge 387-3-3
16				5/02 3707	CD Mel rhyph, Mel vim, occ-Mel over, Mel later Garrula tritor, Chert over (vege) Lopid long (vege) 387-12-1
B 11	} CD/D/veg	✓		5/02	Upland/Wetland appears separately managed (not cultivated) grazed rises cleared 387-11-2
B 12		✓		5/02 3705/6 3707 3708	U Merri over Xanth W Mel rhyph over 3707 11 387-11-1

Entered 10/1/06