

2 ✓



388

398

387

389

378

* delete 4-1

ignore

388

398

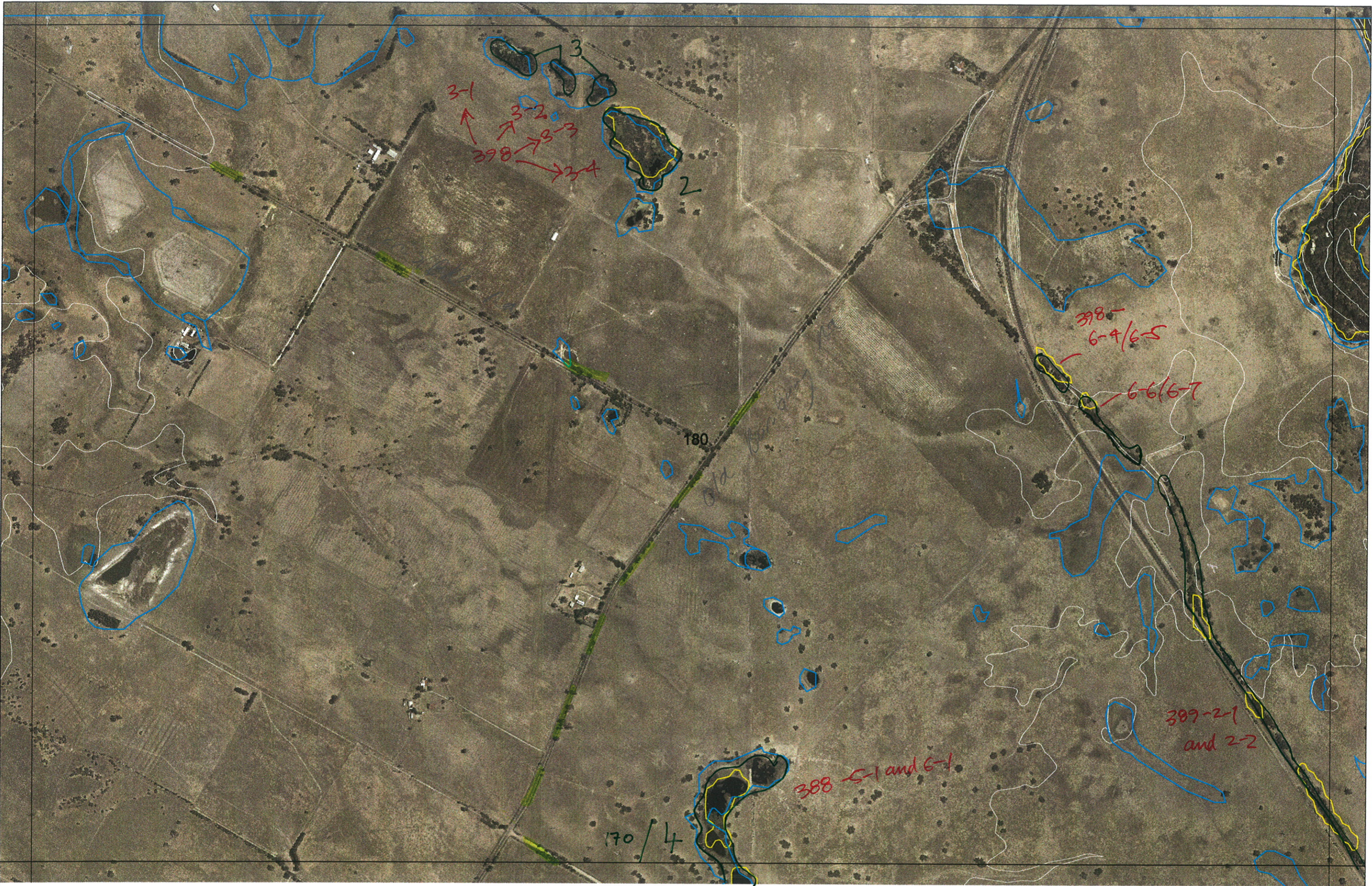
387

389

378

digitized road
to
plantings





Swamp Rd 4 ↓



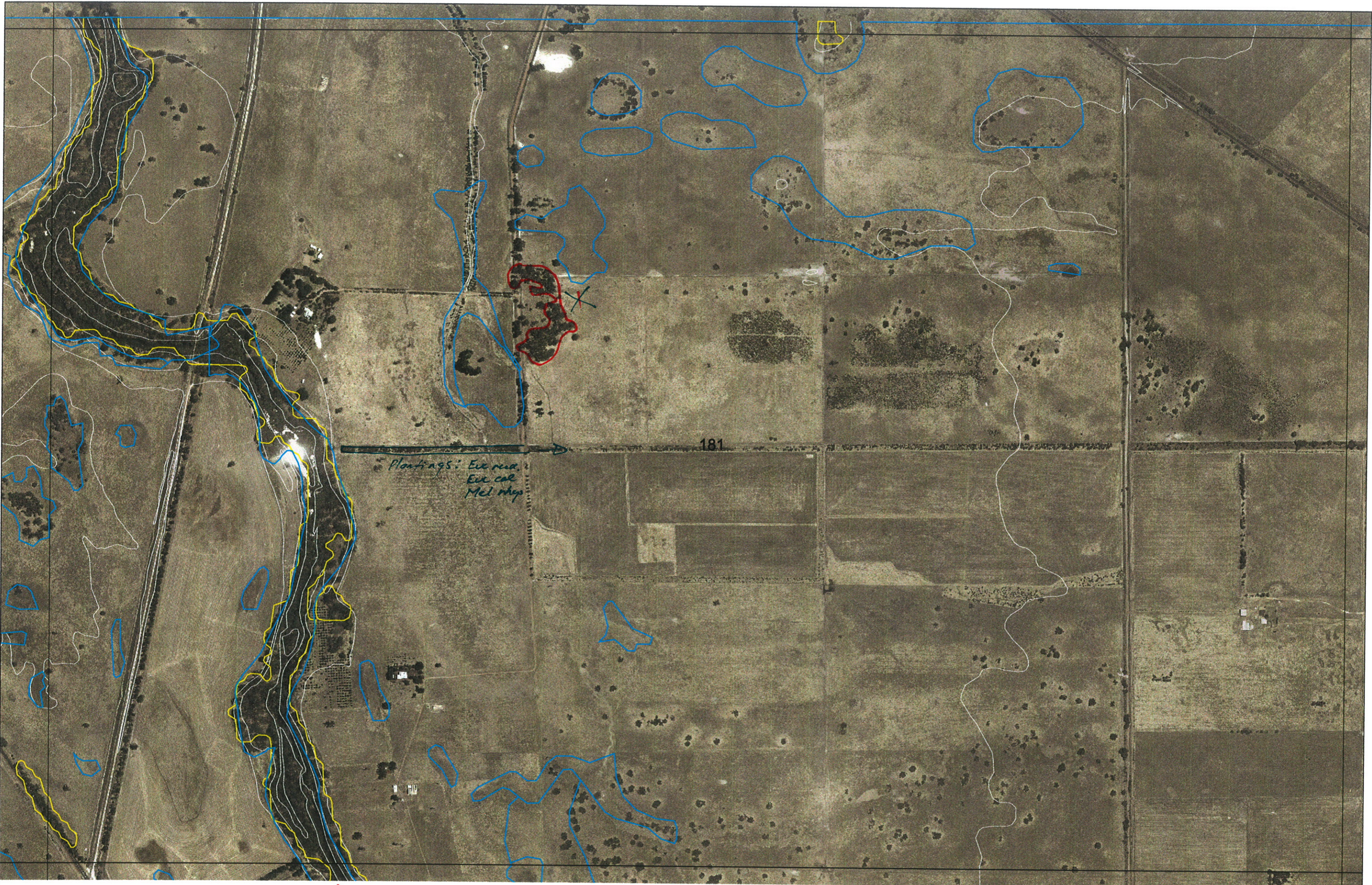


SWAN BIOPLAN MAP SERIES
MAPSHEET 180

TERRESTRIAL ECOSYSTEMS BRANCH
January 24, 2005

A Susong Rd





2↑



railway
↓

← Pinjarra

McLarty Rd
↓
route taken

Pinjarra-Williams Rd
↓
~~Tukey Rd~~ not taken



route
taken

Tukey Rd



| R E M | RE M2 | XM AP | LIN TYPE | L I N E A R | M L U | U N I T S | U P L A N D ? | W E T L A N D ? | V I S I T ? | DETAIL/ Area Name | VEG CON | Field date 200_ | OBS From | YNOTASS | D E T V I S R E Q D | COMMENTS | VEG STRUC/ DENS | FCT | DOMINANTS | | |
|--------------|--------------|--------------|-------------------|----------------------------|-------------------|-----------------------|---------------------------------|--------------------------------------|----------------------------|----------------------|---------------|-----------------------|-------------------|----------------------|--|----------|-----------------------|-----|-------------------|--------|-------------------|
| | | | | | | | | | | | | | | | | | | | 1 | 2 | 3 |
| 1 | 1 | N | | | N | P | I | N | Y | | CD | | aerial | no access | N | | F | | MELRHA | MELPRE | |
| 2 | 1 | N | | | N | P | I | N | Y | | CD | 5/2/06 | distance | | N | | F | | MELRHA | MELPRE | MELTER |
| 3 | 1 | N | | | N | P | I | N | Y | | CD | | aerial | no access | N | | F | | MELRHA | | |
| 3 | 2 | N | | | N | P | I | N | Y | | CD | | aerial | no access | N | | F | | MELRHA | | |
| 3 | 3 | N | | | N | P | I | N | Y | | CD | 5/2/06 | distance | | N | | F | | MELRHA | | |
| 3 | 4 | N | | | N | P | I | N | Y | | CD | | aerial | no access | N | | F | | MELRHA | | |
| 3 | 5 | N | | | N | P | I | N | Y | | CD | | aerial | no access | N | | F | | MELRHA | | |
| 4 | 1 | N | delete | to | D | paths | to | paths | to | | | | aerial | | | | | | | | |
| 5 | 1 | N | | | N | P | I | N | Y | | CD | | aerial | no access | N | | F | | MELRHA | | |
| 6 | 1 | N | | | N | P | I | N | Y | | CD | 5/2/06 | distance | | N | | W | | MELRHA | EUCRUO | |
| 7 | 1 | N | not | worth | adding | N | P | I | N | Y | CD | | aerial | no access | N | | W | | MELRHA | | |

Summary/General Comments

MAP
180

LINEAR PATCH

View

Date
Photo

Notes

Leaves

A

1

✓

Wetland

398-3-4

↕

2

✓

? plantings

398-6-4 to 6-7

3

✓

Wetland

398-3-1 / 3-2 / 3-3

4

✓

Wetland.

388-5-1 and 6-1

Entered 10/1/06

| Priority | Linear | Patch | View | Date | Photo | Notes | |
|----------|-------------|-------|------|--------------|-------|--|---|
| 167 | | | | | | | |
| A 1 | | ✓ | | 5/02 | | Upland/Wetland | 387-1-1 and 2-1 |
| A 2 | | ✓ | | 5/02 | | Wetland, ... | 387-2-1 and 2-2 |
| 3 | | ✓ | | 5/02 | | ? Wetland edge, linear | 387-3-1 and 3-2 |
| A 4 | | | | 5/02 | | Upland/Wetland | 387-1-1 |
| A 5 | | | | 5/02 | | Upland/Wetland w Mel rhyph over sedgs (Lepid long), Junco p. pers. fringing Euc ricis, M. prei | Rises Mari over bank occ Kingia 377-5-1 and 5-2 D/CD/occ good to 205 |
| A 6 | | ✓ | | 5/02 | | <u>Upland/Wetland</u> NO D/CD Mari over Xanth, Dusy brown, Hypersul. | 377-8-1 |
| n-b 7 | | | | 5/02 | | wetland | 377-6-1 |
| ? 8 | | | | 5/02 | | wetland | 377-7-1 |
| ? 9 | | | | 5/02 | | Wetland | 387-5-1 |
| n 10 | | | | 5/02 | | Wetland, central pond, veg at edge. | 387-3-3 |
| 16 | | | | 5/02 3709 | | CD Mel rhyph, Mel vim, occ-Mel one, Mel latri Galnia triba, Chest ans (vege) Lepid long (vege) | 387-12-1 |
| B 11 | } CD/D/peas | ✓ | | 5/02 | | Upland/Wetland appears separately managed (not cultivated) grazed rises cleared | 387-11-2 |
| B 12 | | | | | | U Mari over Xanth W Mel rhyph over sedgs Junco/Banua/Lepid long Edges Mel prei | 387-11-1 |

Entered 10/1/06.

| 169 (CONT) | LINEAR | TATCH | Date Photo | Notes | Parts rd - patches Marri Mel rhyph D/CO. | Recorder |
|------------|--------|-------|---------------|---|---|-----------------------|
| C 13 | | ✓ | 5/20 | Mel rhyph CD (distance) - Part's rd | Verge + patches Mel rhyph | 388-3-3 |
| C 14 | | ✓ | 5/2 | Mel rhyph, Mel pui ? pater Mel kerel CD. | | 388-2-1 |
| A 15 | ✓ | | 5/2 | CD Marri, E. rudis PLUS plantings | scat xanth ? not mapped CD anyway | |
| 170 | | | | | | |
| 1 | | ✓ | 5/02 3702 | Opp linear plantings paddock Remnant = wetland (✓), Mel rhyph CD | occ E. rudis self sown | 378-5-1 |
| 2 | | ✓ | 5/02 | Plantings (like Mel rhyph rd) with above Paddock Scat Marri | contiguous | |
| 3 | | ✓ | 5/02 3703 | Open HD (Wetland ✓) plantings NW corner, | fringing Mel rhyph, Baumea articulata? Ac salis, Mel laterita. | ? not mapped ? add |
| 3a | ✓ | | 5/02 | Marri over xantho prussid | CO/D | |
| 4 | | ✓ | 5/02 | CD Mel rhyph, E. rudis | | 388-6-1 |
| 5 | ✓ | | 5/02 3704 | CO/D Marri over xantho | occ Mel rhyph | cant see on map. |

| | | DATE | Date Photo | Notes | Pauls Rd - patches Marri Mel rhyph D/CO | |
|---------|---|------|---------------|---|--|---------------------------|
| | | ✓ | 5/23 | Mel rhyph CD ✓ (distance) - Pauls Rd | Large patches Mel rhyph | 388-3-3 |
| C 14 | | ✓ | 5/2 | Mel rhyph, Mel pri? patch Mel level CD. | | 388-2-1 |
| A 15 | ✓ | | 5/2 | CD Marri, E. raris plus plantings | scat xanth | ? not mapped CD anyway |
| 170 | | | | | | |
| 1 | | ✓ | 5/02 3702 | Opp linear plantings paddock Remnant = wetland (✓), Mel rhyph CD | occ E. raris self sown | 378-5-1 |
| 2 | | ✓ | 5/02 | Plantings (like Mel rhyph rd) with above Paddock Sect Marri | contiguous | |
| 3 | | ✓ | 5/02 3703 | Open HD (Wetland ✓) plantings NW corner, | fringing Mel rhyph, Baumea antarctica? Ar setis, Mel lateritia. | not mapped ? add |
| 3a | ✓ | | 5/02 | Marri over xantha prostrata | CO/D | |
| 4 | | ✓ | 5/02 | CD Mel rhyph, E. raris | | 388-6-1 |
| 5 | ✓ | | 5/02 3704 | CO/D Marri over xantha | occ Mel rhyph | cant see on map. |