



393

403

394

383

392/1-1

403/11-3

403/11-2
403/11-1
403/10-2

392/1-1

392

383/1-1

383/1-1

383/1-11

383/2-1

383/4-1
384/2-8

1-3

1-4

1-8

1-2

1-5

1-6

1-7

1-9

3-1

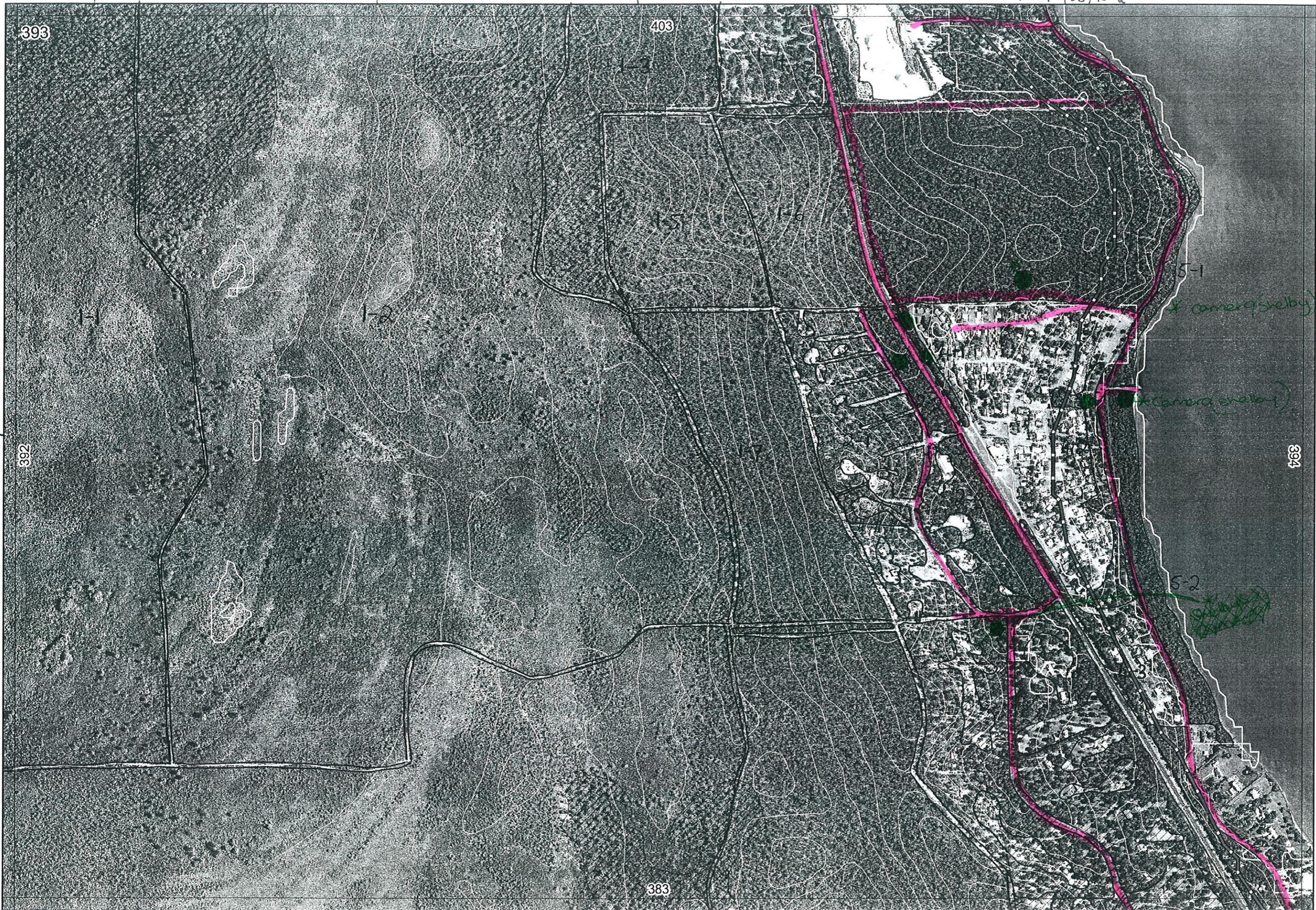
4-1

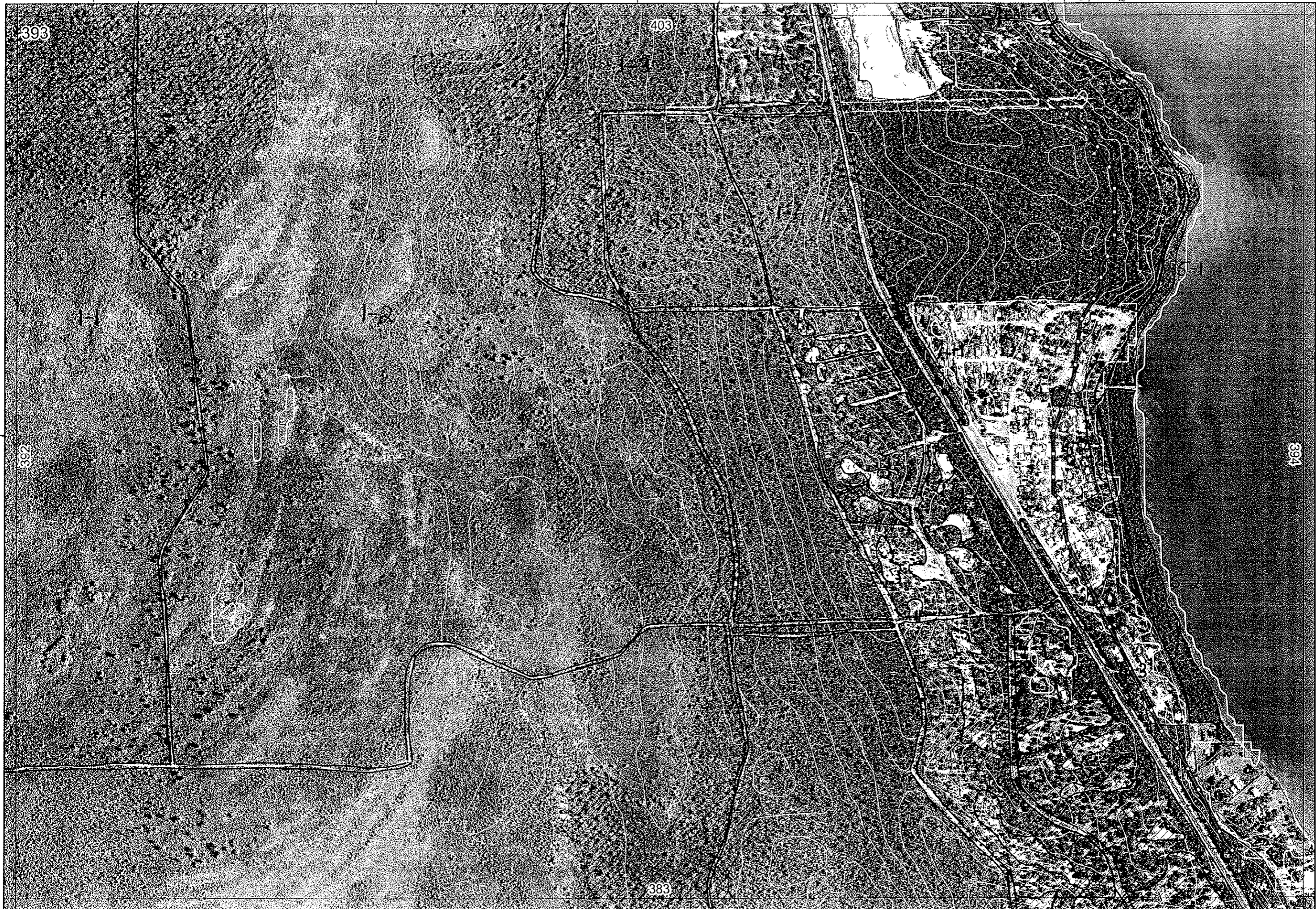
5-1

5-2

3

W. H. H. H.





393

403

392

394

383

383/1-1

383/1-11

383/2-1

384/1

383/4-1

403/11-3

403/11-2

403/11-1

403/10-2

Sent to Ag

383/1-1

R E M	RE M2	XM AP	LIN TYPE	L I N E A R	M L U	U N I T S	U P L A N D ?	W E T L A N D ?	V I S I T ?	DETAIL/ Area Name	VEG CON	Field date	OBS From	YNOTASS	D E T V I S R E Q D	COMMENTS	VEG STRUC/ DENS	FCT	DOMINANTS				
																			1	2	3		
1	1	Y	na	N	Q _s	4	Y	N?	?	Yalgorup NP						no access? wetland?							
1	2	Y	na	N	Q _s	4	Y	N?	?	Yalgorup NP						no access? wetland?							
1	3	Y	na	N	S	1	Y	N	?	Yalgorup NP						no access?							
1	4	Y	na	N	S	1	Y	N	Y		D- CD	13/7									same as 2-2 but disturbed.		
1	5	N	na	N	S	1	Y	N	?	Yalgorup NP		13/7				no access?							
1	6	N	na	N	S	1	Y	N	Y			13/7				Incorporate into Yalgorup NP?					same as 2-2		
1	7	N	na	N	S	1	Y	N	?			15/7				Incorporate into Yalgorup NP? no access.							
2	1	N	na	N	S	1	Y	N	Y		Vg- Ex	13/7	edge	-	-	Remnants within subdivision	F				Eucal	Agoflox	Eucgom
2	2	N	road	Y	S	1	Y	N	Y		Ex- Vg	13/7	"	"	"	" " Eucal"	F				BANATT	AKFRA	Eucmar
2	3	N	road	Y+	S	1	Y	N	Y		Vg- Ex					" " Eucal"	F				"	"	"

Summary/General Comments
 1-6 & 3-1 & 5-1 form excellent opportunity for linkage from estuary foreshore through to Yalgorup NP & coastline, incorporate 1-6 into Yalgorup NP?
 1-7 contiguous with Yalgorup NP, incorporate into Yalgorup NP?

R E M	RE M2	XM AP	LIN TYPE	L I N E A R	M L U	U N I T S	U P L A N D ?	W E T L A N D ?	V I S I T ?	DETAIL/ Area Name	VEG CON	Field date 200_	OBS From	YNOTASS	D E T V I S R E Q D	COMMENTS	VEG STRUC/ DENS	FCT	DOMINANTS		
																			1	2	3
3	1	N	na	N	S	3	Y	N	Y		Ex- VG	13/4	edge			Cave at bottom WA Limestone's Quarry Dawesville Pit 94342299	F F F		Eucgom Banatt Agoflex Dry Sess	Agoflex Allofras	Banatt Euc mar
4	1	N	road	Y	S	1	Y	N	Y		D- CD	13/4	edge	-	-	Remnants within subdivision	F		Eucal	Agoflex	#2883/4-1
4	2	N	road	Y	S	1	Y	N	Y		CD- D	13/4	edge	-	-	Canopy " "	F		Eucgom	Agoflex	
4	3	N	road	Y	S	1	Y	N	Y							" " "		Same	as 4-1 & 4-2		
5	1	N	foreshore estuary	Y	S	2	Y	Y	Y							Osprey roosting	W F		Melrha Eucrud	Junkraus	
5	2	N	foreshore estuary	Y	S	3	Y	Y	Y		VG- Ex	13/4	Edge	-	-	Osprey overhead	F F		Melcot Melrha	Casobe Ghatri	Jon
3	4	1															F		Eucgom	Alloflex	
3	2	1									G- VG	13/7	edge	-	-	3th pattern visited 30/5/06 by BJR+Erin condition CD-D.	F		Eucal	Eucmar	Agoflex
2	8										G- D	13/7	edge	-	-	Canopy mostly	F		Eucal	Banatt	Xylocc *

Summary/General Comments