

Mapsheet 395

See Page 405

See Page 394

See Page 396

See Page 385

Map Sheet 177

405/1-6

405-1-7

405/4-1

405/4-3

394

396/2-1

394

↓

EEGA

Map Sheet Number 395

Pre Field Recorder(s) SM

Field Recorder(s) SM BK

Swan Bioplan Vegetation Mapping Data

R E M	RE M2	XM AP	LIN TYPE	L I N E A R	M L U	U N I T S	U P L A N D ?	W E T L A N D ?	V I S I T ?	DETAIL/ Area Name	VEG CON	Field date 200_	OBS From	YNOTASS	D E T V I S R E Q D	COMMENTS	VEG STRUC/ DENS	FCT	DOMINANTS			
																			1	2	3	
1	1	Y		N	P	4	N	Y		Austin Bay NR (Part)			aerial		N	See 1-5 405	F S					
2	1	N		N	S	1	N	Y					aerial		N							
2	2	N		N	S	1	N	Y					aerial		N							
2	3	Y		N	S/M	2	N	Y					aerial		N							
3	1	Y		N	M/ BPG	4	Y	Y		Lake Meakup NR	08/05		aerial		N	Tuat						
4	1	N		N	M	1	N	Y		Austin Bay NR (part)			aerial		N							
4	2	Y		N	BPP M	2	N	Y					aerial		N						= 405-1-6	
4	3	Y		N	BPP M	3	Y	Y					aerial		N							= 405-1-7
4	4	Y		N	M	1	N	Y					aerial		N							
4	5	N		N	M	1	N	Y					aerial		N							
4	6	N		N	M	1	N	Y					aerial		N							
4	7			N	M	2	N	Y					aerial		N							
4	8			N	M	2	N	Y					aerial		N							
4	9			N	M	1	N	Y					aerial		N							
4	10			N	M	1	N	Y					aerial		N							
4	11			N	M	2	N	Y					aerial		N							
4	12			N	M	1	N	Y					"		"							
4	13			N	M	1	N	Y					"		"							

Summary/General Comments

RE M	RE M2	XM AP	LIN TYPE	L INEAR	M LU	U NITS	U PLAND D?	W ETLAND D?	V ISIT?	DETAIL/ Area Name	VEG CON	Field date 200_	OBS From	YNOTASS	D ET V I S R E Q D	COMMENTS	VEG STRU C/ DENS	FCT	DOMINANTS		
																			1	2	3
5	1	N		N	S	1	Y	N					airial		N		W				
6	1	N	channel	Y	M	1	N	Y					"		"		F				
6	2	N	"	Y	M	1	N	Y					"		"		F				
6	3	N	"	Y	M	1	N	Y					"		"		F				
6	4	N	"	Y	M	1	N	Y					"		"		F				
7	1	N		N	B/P	1	N	Y					"		"		F				
7	2	N		N	B/P	1	N	Y					"		"		F				
8	1	N		Y	B/P	1	N	Y					"		"		F				
8	2	N		N	B/P	1	N	Y					"		"		F				
9	1	Y		N	B/P	1	N	Y					"		"		F				
10	1	Y		N	B/P	1	Y	N					"		"		F				
10	2	Y		N	B/P	1	Y	N					edge		"		F		Excal	405/4	
11	1	N		N	B/P	3	Y	Y					edge		"		F FM		Euc mas		
11	2	N		N	B/P	1	N	Y					airial		"		F				
11	3	N		N	B/P	1	Y	N					"		"		F				
11	4	N		N	B/P	1	Y	N					"		"		F				
12	1	Y		N	B/P	1	N	Y					edge		"		F		mel rap		
13	1	Y		N	B/P	2	N	Y					edge		"		F				
13	2	Y		N	B/P	1	N	Y					airial		"		F				

Summary/General Comments

4 1 N - N B/P 1 NY
 2 N - N " 1 NY
 3 N - N " 1 NY

Misnumbered & not recorded originally

}*

Entered 10/1/06.

DoE BJ Keighery 8/2005

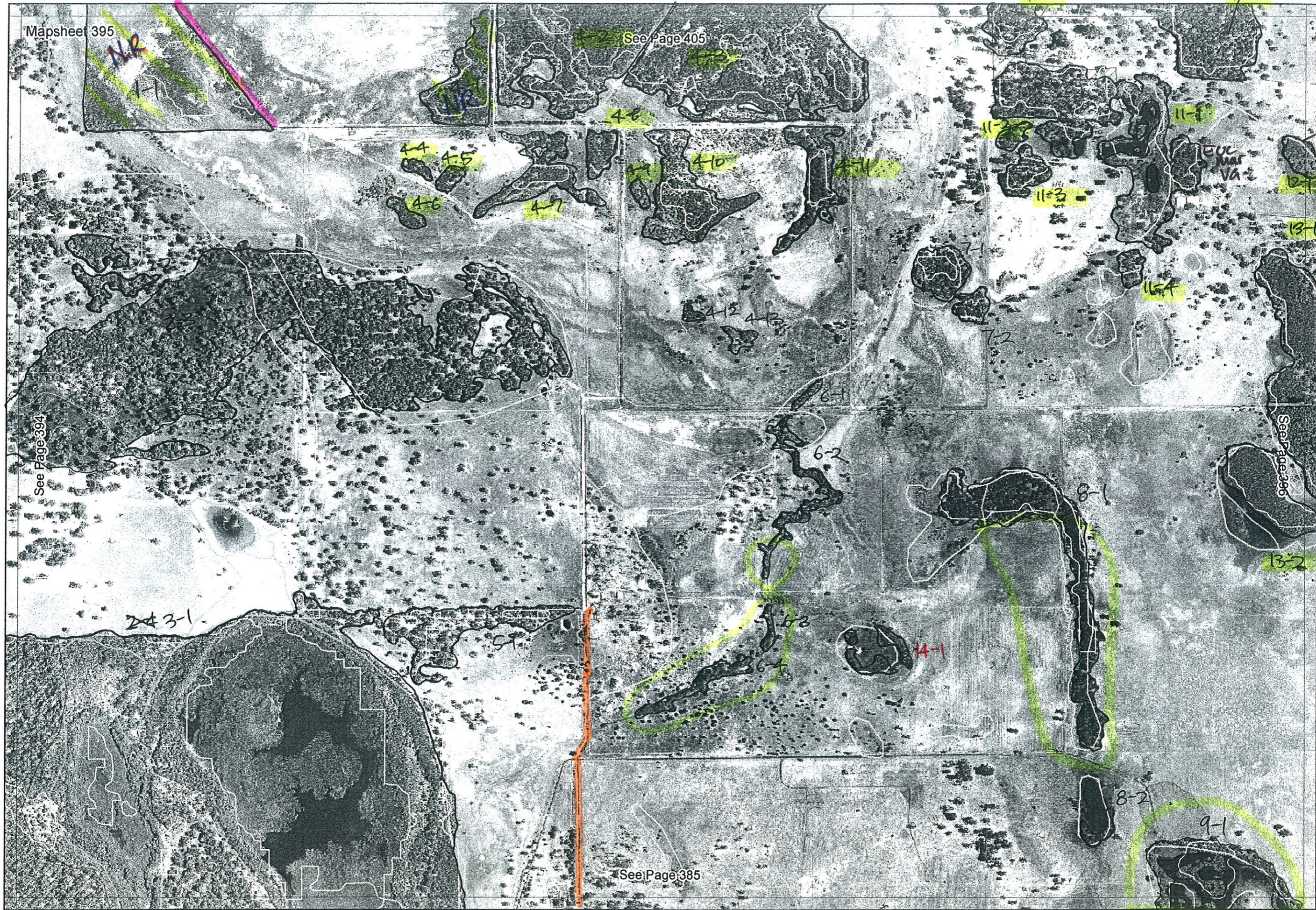
Map for this data @ 386.

SCP NATURAL AREA MAPPING SHEET
MAP SHEET 177 REC PRE-FIELD SM

REC FIELD SM BK

REMNANT NO	VEGETATION CONDITION	low forest VEGETATION/ PREVIOUS INFO	SIM REM	DETAIL
11	CD	Mel rap / E.rodia SM by scattered E. cal E. rodia	396-3-1	
12	in pasture		396-3-4	
20			396-3-3	
10			396-2-1	
19			E. cal canopy E. mor B. gra B. aff forest no understory	396-5-1
13, 14, 15, 16, 22	CD Typha beds	Typozi B. aff Mel rap } all linked by open water 8/8/05	396-4-1 "	
21	CD	E. cal Mel rap M. ter? M. sp.	386-1-2 385-4-1/4-2	
16	CD	same as 21	386-2-1	
6, 7, 8, 9	CD	Mel rap lots of birds in all wetlands swans / mtn ducks / ? birds coots 7 Mel ter + E. rodia wrens		395-9-1
5	CD	6 grouped in all wetlands Mel rap		
14, 14	CD	E. rodia some Mel rap	395-6-3/6-4	
2	CD	2 - Mel rap	395-6-2	
3	CD	Mel rap	395-14-1	
17, 18 near 26	D-CD	Mel rap lep low under Mel rap. ? cant find now champagne	386-3-1 and 3-2 coming	
24	D-G-CD	E. cal Banksia wetland	385-1-1	

NOTES



↑ Carrahngop Rd
Drain

↑ Eucal
Poplond
cleared
Carrahngop Rd

Mapsheet 395

See Page 405

N.R.

→ Mel
Tha
DCD

→ 624
625
EX-VA
wetland
mosaic

→ Map
Sheet
177 ↓

See Page 394

See Page 396

See Page 385

Map
Sheet
177 ↓

Map Sheet 177
travelled 08/05

↓ Lake Meelop Rd

8/8/05

SCP NATURAL AREA MAPPING SHEET

MAP SHEET 176

REC PRE-FIELD SM

REC FIELD SM + BK

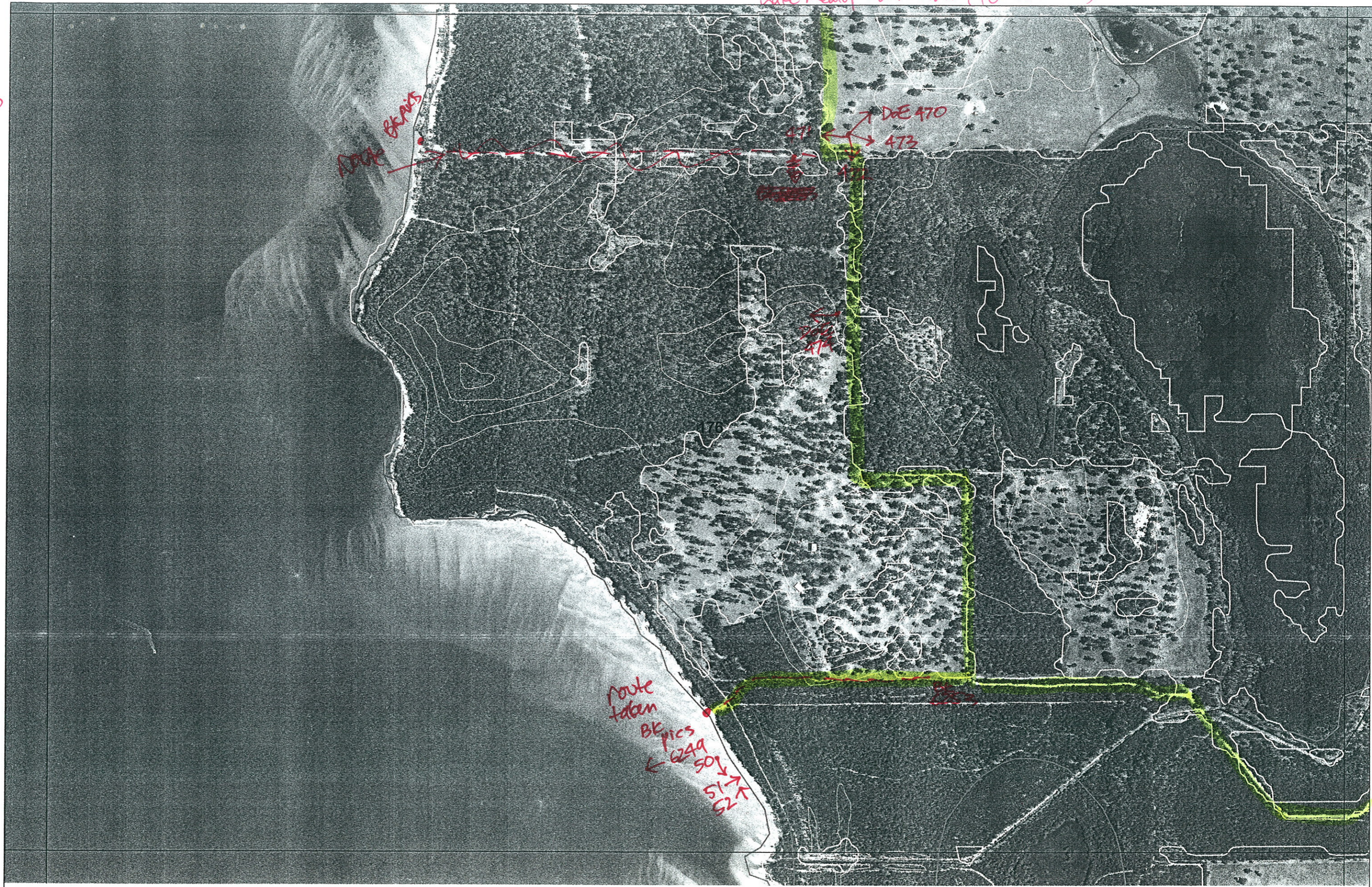
DoE BJ Keighery 8/2005

REMNANT NO	REMNANT GROUPED	NON-LINEAR	LINEAR PLUS	NO WETLAND (PARTIAL)	% WETLAND VEG	FIELD YES/NO	FIELD DATE	PHOTO NO	LOCAT. OBSERV.
1	}	✓		0					
2		✓		0					
3		✓		(1)	2				
4		✓		0					
5		✓		0					
25		✓		(1)	5				
24		✓		0					
23		✓		(1)	1				
NOTES									



Watters
Atlas
46
CAAM map
107

Lake Mead Rd North. (turn around)



SWAN BIOPLAN MAP SERIES
MAPSHEET 176

TERRESTRIAL ECOSYSTEMS BRANCH
January 24, 2005

route taken
8/8/05

Lake Mead NP
covers part of the lake

Lake Mead Preserv. own rest

