

Ag Mapped

Ag

Mapsheet 404

See Page 414

1-8

3-1

See Page 403

See Page 405

See Page 394

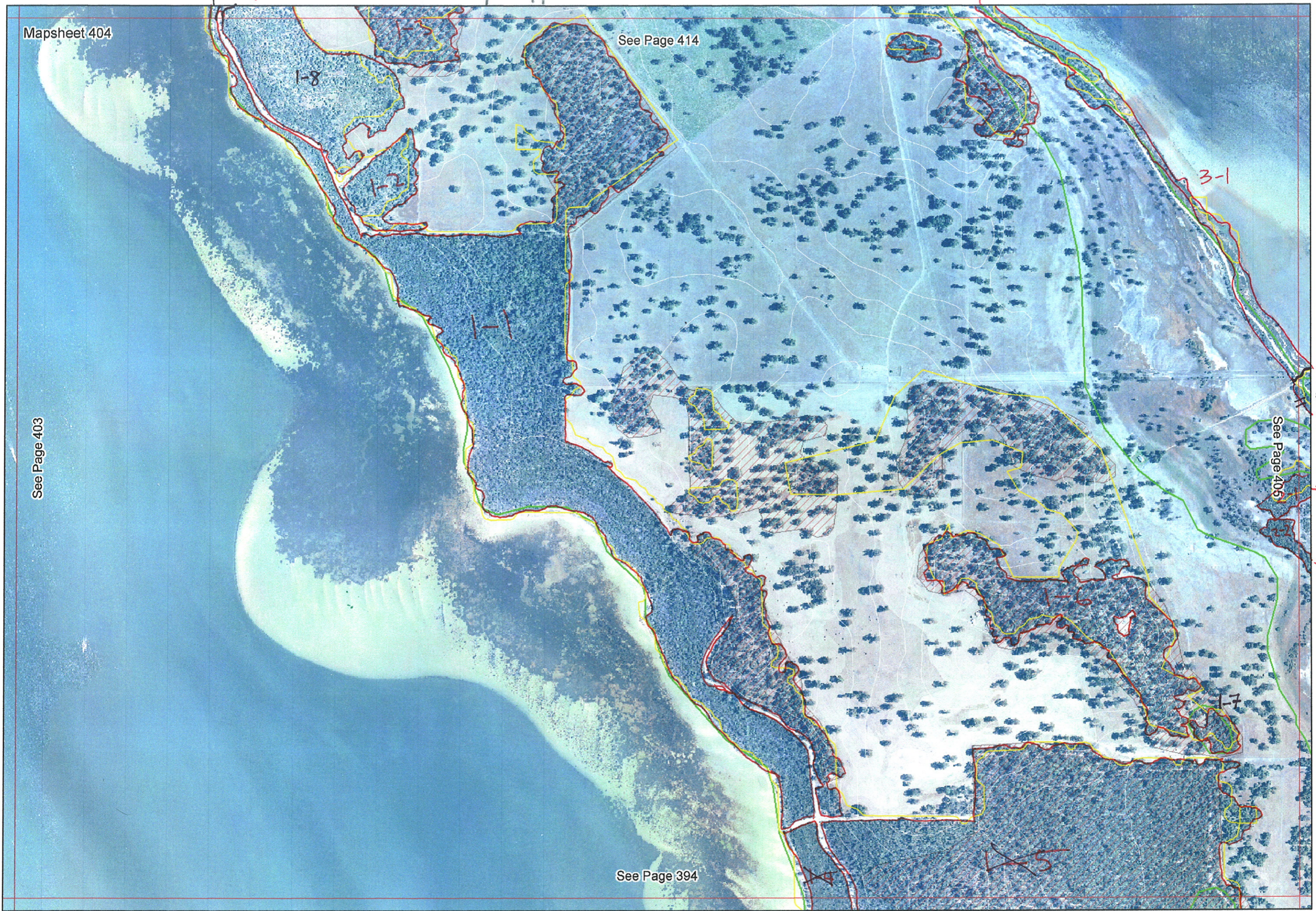
1-7

X5

394-1-1

394-1-1

EEEA



Twant parkland cleared CD

13/10/05

Mapsheet 404

See Page 414

630
640

*map
Foreshore
Veg
Sampfires
Casobe

Scattered
Erodias

See Page 405

See Page 403

See Page 394

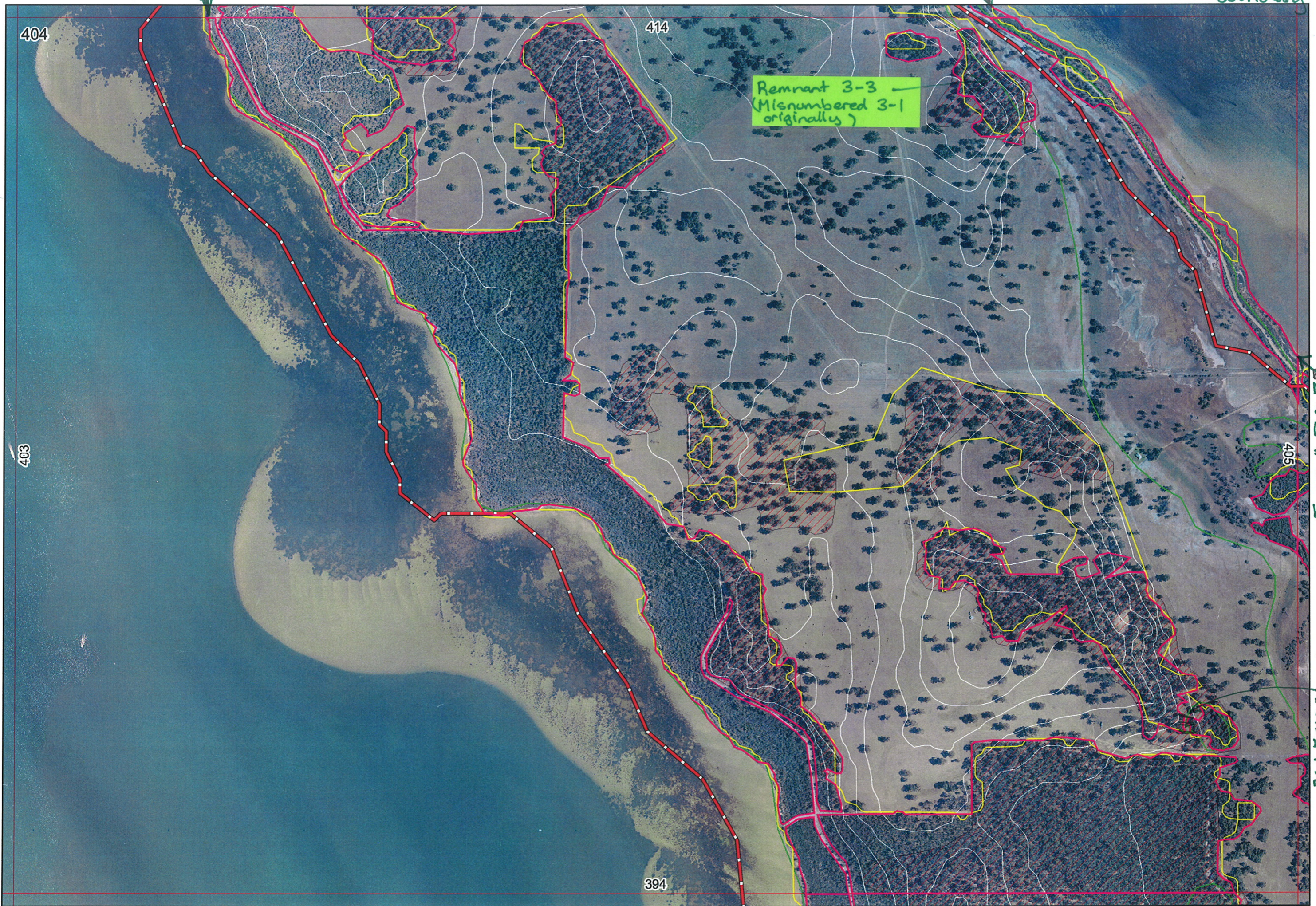
1-4

1-5



New study boundary = 2005 rem. veg. boundary

New study boundary = 2005 rem. veg. boundary



Remnant 3-3
(Misnumbered 3-1
originally)

New study boundary = 2005 rem. veg. boundary

To minor BK

note number change in boundary join 2 remnants

New study boundary = 2005 rem. veg. boundary

R E M	RE M2	XM AP	LIN TYPE	L I N E A R	M L U	U N I T S	U P L A N D ?	W E T L A N D ?	V I S I T ?	DETAIL/ Area Name	VEG CON	Field date 200_	OBS From	YNOTASS	D E T V I S R E Q D	COMMENTS	VEG STRUC/ DENS	FCT	DOMINANTS		
																			1	2	3
1	1	Y		NS	A	Y	Y	D		Point Grey - see	Ex	13/10/05	NA		Y	Variable condition see Pt. Grey report. Agonis flex present check if FAD 26a present	S F F		Junsp. Kunqia Eucmar	Alofra Euccal	Banatt Bansp
1	2	N		NS	1	Y	N	D		Point Grey	VG	13/10/05	NA		Y	check if FCT 26a present	F		Banatt		
1	3	Y		NS	1	Y	N	D		Point Grey	G	13/10/05	NA		Y	Tuart	F		Eucgom		
1	4	Y		NS	2	Y	Y	D		Point Grey	E	13/10/05	NA		Y	} = both part of 394/1-1 } Combine records with 394/1-1	S F F F		Junsp Kunqia Kunqia Eucmar	Alofra Alofra Euccal	Banatt Banatt Bansp
1	5	Y		NS	2	Y	N	D		Point Grey	E	13/10/05	NA		Y						
1	6	N		NS	2	Y	Y	D		Point Grey	D	13/10/05	NA		Y	Tuart	F F		Eucgom Melrha		
2	1	Y		NB/P	1	N	Y	D		Point Grey	D	13/10/05	NA		Y		F		Melvim	Melunc	Melrap
2	2	Y		NB/P	1	N	Y	D		Point Grey	D	13/10/05	NA		Y		F		Melvim	Melunc	Melrap
3	1	N	foreshore	YS	1	N	Y	D		Point Grey	G	13/10/05	NA		Y		M		Halsp	Casobe	
3	2	N		NS	1	Y	N	D		"	D	"	"		Y	Tuart	F		Eucgom		
3	3	N		NS	1	Y	N	D		"	D	"	"		Y	Tuart	F		Eucgom		
1	8	Y		NS	2	Y	N			Point Grey	Ex-VG Part of		1-1			originally but needed to be separated.	F S		Eucmar Junsp	Euccal	Bansp
1	7	N		NS	1	N	Y			"						Mapped originally but not numbered, same as 1-6	F		Melrha		

Summary/General Comments

SCP NATURAL AREA MAPPING SHEET
 MAP SHEET 404

REC PRE-FIELD A RICHARDSON

REC FIELD SM

DoE 8/2005

entered 9/11/05

REMNANT-PART NO	NON-LINEAR	LINEAR PLUS TYPE	CROSSES MAP SHEET BOUNDARY (Y/N)	FIELD VISIT REQ YES/NO	FIELD DATE	LOCAT. OBSERV.	WETLAND VEG (Y/N)	SIM REM	DETAIL (Y/N)	VEGETATION CONDITION	VEGETATION/PREVIOUS INFO
1-1	Y		Y								
1-2	Y		N								
1-3	Y		Y								
1-4	Y		Y								
1-5	Y		Y								
1-6	Y		N								
2-1	Y		Y								
2-2	Y		Y								
3-1	Y		N								
3-2	Y		N								
NOTES											