

BJK 6/02/06

Map Sheet Number 417

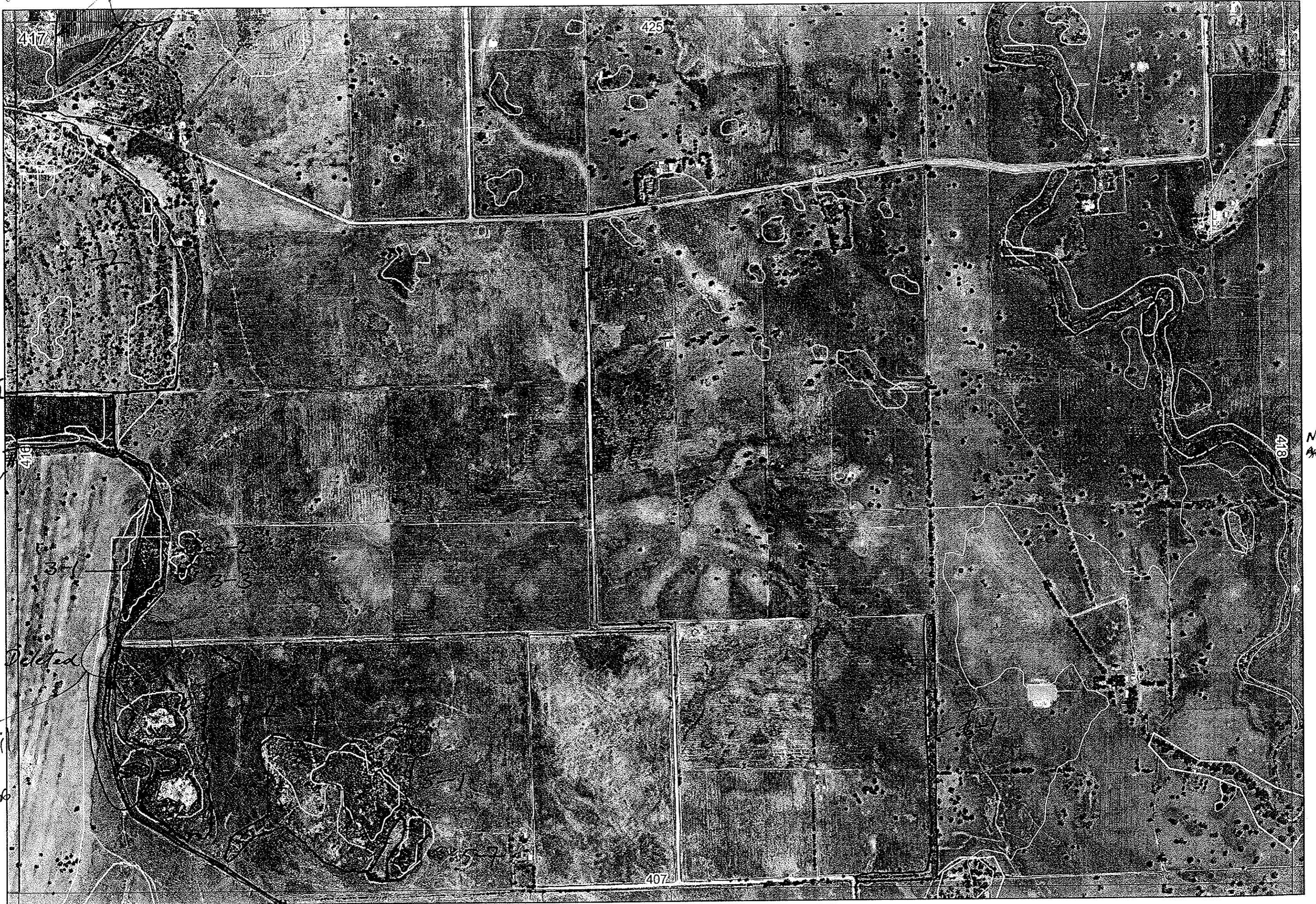
Pre Field Recorder(s) SM & AR

Field Recorder(s) SM

Swan Bioplan Vegetation Mapping Data

R E M	RE M2	XM AP	LIN TYPE	L I N E A R	M L U	U N I T S	U P L A N D ?	W E T L A N D ?	V I S I T ?	DETAIL/ Area Name	VEG CON	Field date 200_	OBS From	YNOTASS	D E T V I S R E Q D	COMMENTS	VEG STRU C/ DENS	FCT	DOMINANTS		
																			1	2	3
1	1	N	—	N	PP	1	N	Y	Y		4.7	9/05	edge	—	N	Used photos taken in field	F	NA	Mel. rhaph		
1	2	Y	Part 1-1	on						Map Sheet 416			Note condition			E edge is 5.					
2	1	Y	—	See		1-1				Map Sheet 416											
3	1	Y	Drain	Y	P	3	N	Y	Y		4.7	6/02/06	aerial	No Access		Access via Drain?	W	NA	Euc rudis		
3	2	N	—		N	P	1	N	Y		5.7	6/02/06	"	No Access	} 3-1	}	F	NA	Mel species		
3	3	N	—		N	P	1	N	Y		5.7	6/02/06	"	"			SH	NA	Mel species		
4	2	N	—		N	P	4	N	Y		4.7	6/02/06	"	"			F		Mel species		
																	SH		Mel species		
																	S		Mixed Sedges		
																	H		Mixed.		
5	1		as for							4-3											
5	7	N	—		N	P	1	N	Y		5.7	9/05	Dist	No Access			F	NA	Mel rhaph		
7	1	N	unmade road	Y	P	2	Y	Y			5.3	6/02/06	aerial				W		Euc cal		
																	SH		Mel species		
6	1	N	channel	Y	P	1	N	Y			6/2/06	aerial	AW				W		melsp.		
6	3	N	"	Y	P	1	N	Y			"	"	"				W		"		
6	4	Y	"	Y	P	1	N	Y			"	"	"				W		"		
6	5	Y	"	Y	P	1	N	Y			"	"	"				W		"		

Summary/General Comments



New

417

425

416

418

407

405-7

Toins
1-5
on
416

2 lines

Part
1-1
on
416

No -
416

3-1
3-2
3-3

Deleted

See
detail
6/2/06

Austin Bay NR

visited W Erin + Bronwen

Mapsheet 417

See Page 425

1-1
183

1-1

183

6-1

6-2

6-3

6-4

See Page 418

See Page 416

2-1

3-1

3-2

3-3

4-2

4-4

4-1

5-3

5-4

5-5

5-1 5-2

5-7

5-6

See Page 407

drain
no vehicle access



SCP NATURAL AREA MAPPING SHEET
 MAP SHEET _____

DoE 8/2005

BJK
6/02
Photos

REMNANT NO	VEGETATION CONDITION	VEGETATION/ PREVIOUS INFO
1-1	5-3	Euc rdais Woodland
1-1		Mel rhaps, Sect Euc rdais Forest
		1-1 Mel rhaps
NOTES		