

Ag

EBEA

R E M	RE M2	XM AP	LIN TYPE	L I N E A R	M L U	U N I T S	U P L A N D ?	W E T L A N D ?	V I S I T ?	DETAIL/ Area Name	VEG CON	Field date	OBS From	YNOTASS	D E T V I S R E Q D	COMMENTS	VEG STRUC/ DENS	FCT	DOMINANTS		
																			1	2	3
1	1	✓			B	2		✓			2.7	22/9	edge				M		Kun eri	Mel lat	
1	1				B												M				
1	2				B	1		✓			3	BK 22/9/06	across interp	?			M				
1	3				B	2	✓	✓			3.7	BK 22/9/06	across interp	?			M				
1	3				B												M				
1	4				B	3	✓	✓		Unnamed Not Res	2.7	BK 22/9/06	across interp	Not. Res		Nature Reserve - unnamed A class - 41184	M				
1	4				P					"						"	M				
1	4				B					"						"	W				
1	5				B	2		✓			5	BK 22/9/06	across interp	?		Plots - sys 6 update	M	3a	Pind Ø1		
1	5				P											"	M	9	Pind Ø2		
1	6				B	2	✓	✓			4	BK 22/9/06	across interp BK 22/9/06	not seen			M				
1	6				B												M				
2	1		channel	P		1		✓			5	22/9	edge				F		? Mel sp.		
2	2	✓	channel	P		1		✓			5	22/9	edge				F		? Mel sp.		
2	3		channel	P		1		✓			5	BK 22/9/06	across interp	not seen			F		? Mel sp.		
3	1				B	1		✓			3.3	22/9	edge				M		Kun eri	Mel rha	
3	2				B	2		✓			2	22/9	edge				M				
3	2				B												M				

Summary/General Comments

R E M	R E M 2	X M A P	L I N E A R	L I N E A R	M L U	U N I T S	U P L A N D ?	W E T L A N D ?	V I S I T ?	D E T A I L A r e a N a m e	V E G C O N	F i e l d d a t e 2 0 0 _	O B S F r o m	Y N O T A S S	D E T A I L R E Q U I R E D	C O M M E N T S	V E G S T R U C T U R E D E N S	F C T	D O M I N A N T S										
																			1	2	3								
4	1				P	2	✓	✓			3.3	22/9	edge				M		Euc cal	Xan prc	Mel pre								
4	1				B												W		Euc cal										
5	1				B	1		✓			4.3	22/9	edge				M		Kun eri										
6	1		channel	river				✓									W		? Euc rud	? Mel sp									
<div style="border: 1px solid black; border-radius: 15px; padding: 5px; display: inline-block;">           Divide into 2            with notes            W = 419 10-3            E = 419 10-4         </div>																													
6	2				P	1		✓			4.3	22/06	airial				W		Mel sp.										
6	3				P	1		✓			4.3		airial				W		Mel sp.										
6	4				P	1		✓			4		airial				W		Mel sp.										
6	5				B	1		✓			4		airial				W		Mel sp.										
7	1				P	1		✓			4	22/9	edge				F		Euc rud	Euc cal	Mel rha								
8	1				B	1		✓			5.3	22/9	edge				W		Euc rud										
8	2				B	2		✓			2	22/9	edge				W		Mel rha										
8	2				B						5.3						M												
9	1				B	2		✓			2	22/9	edge				F		Euc rud										
9	1				B						5.3						M												
10	1	✓			B	4	✓	✓			3.3	BR 22/06	airial	not seen			M	5											
10	1				B						3.3		"	"			W	21a											
10	1				D						3.3		"	"			M	12											
10	1				B												M	4											

Summary/General Comments

Submission  
 Hampdon Rd  
 Bushland,  
 Pinjarrah

detailed info. plots hamp  
 hamp 2  
 hamp 3  
 hamp 4

detailed info may be on map sheet  
 419, 426 or 427 for river

Add to Comments  
 10-1

Previous work done  
 for TPS Amendment  
 by DPI + EPA



put on A3 sheet

? Cadastre info - Pot structural classification

SCP NATURAL AREA MAPPING SHEET

not done

DoE 8/2005

MAP SHEET 418

REC PRE-FIELD opportunistic

REC FIELD SM

entered 9/11/05

REMNANT NO	PART NO	NON-LINEAR	LINEAR PLUS	CROSSES MAP SHEET BOUNDARY (Y/N)	FIELD VISIT REQ YES/NO	FIELD DATE	LOCAT. OBSERV.	WETLAND VEG (Y/N)	SIM REM	DETAIL
1	1	Y		Y	Y	22/9	road	Y		
2	1	N	channel	N	Y	22/9	edge	Y		
2	2	N	channel	Y	Y	22/9	edge	Y		
1	1	Y		22						
1	2	Y		22						
1	3	Y		22						
1	4	Y		22						
1	5	Y		22						
3	1	Y		22						
3	2	Y		22						
4	1	Y		22						
5	1	Y		22						
6	1	N	channel	Y						
7	1									
8	1	Y		22						
8	2	Y		22						
9	1	Y		22						
10	1	Y		22						
1	6									
2	3									
11	2									
6	2,3,4,5									
4	2									
NOTES										
10	2,3									
7	2									

see new data sheet BR 8/2/06



13 Oct 2005

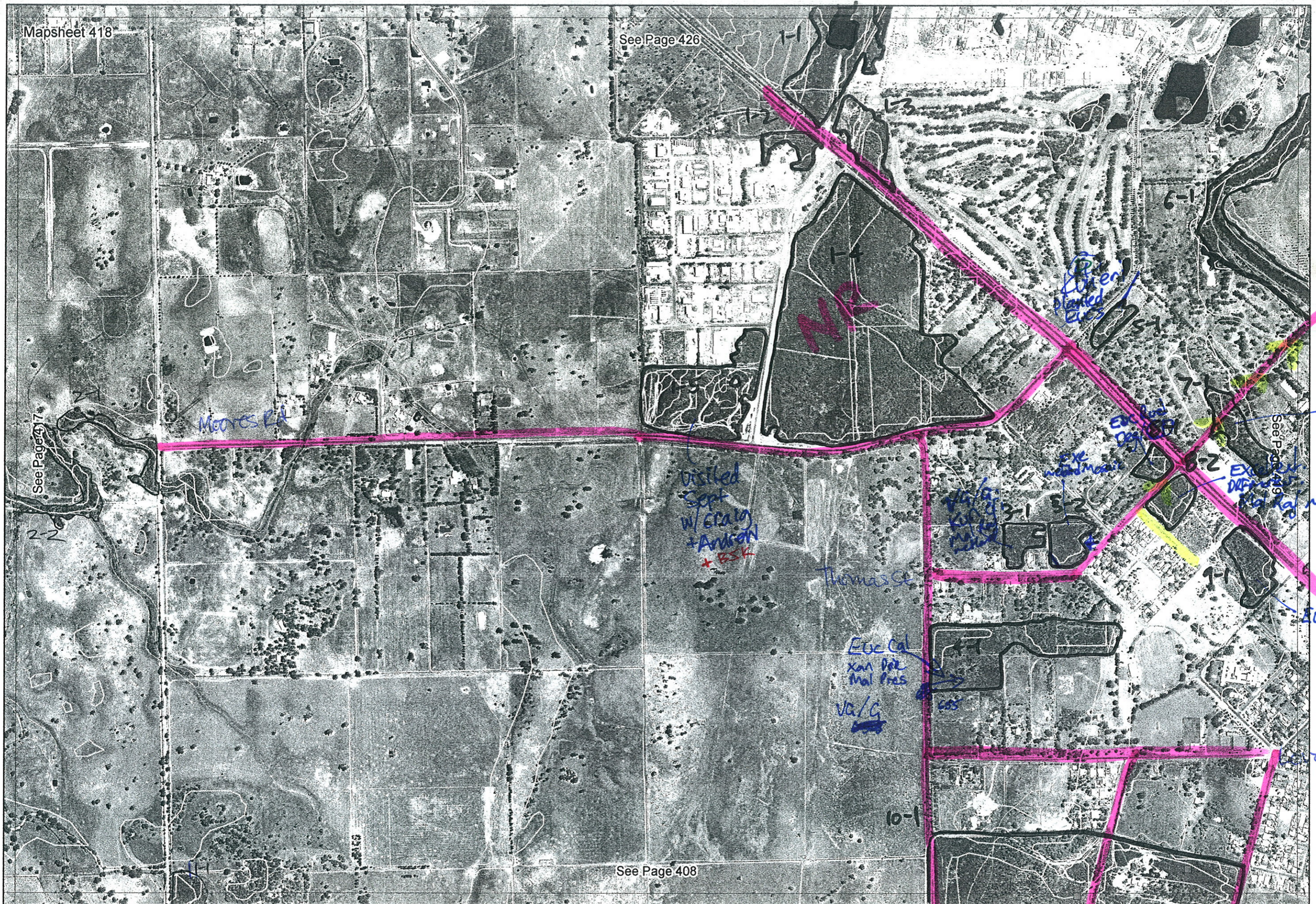
Mapsheet 418

See Page 426

See Page 417

See Page 419

See Page 408



MOORE RD

visited  
Sept  
w/ Craig  
+ Anderson  
+ BSK

Thomas St

EUC Cal  
xan Pol  
Mal Pres  
VA/G

Open  
started  
EUC

EUC  
DIP

EX  
near main

EX  
DIP  
Mal Rd

Wilson Rd  
Mal Rd  
EUC Cal  
EUC Cal  
D/CD/G

Anjara Rd  
EUC Rud

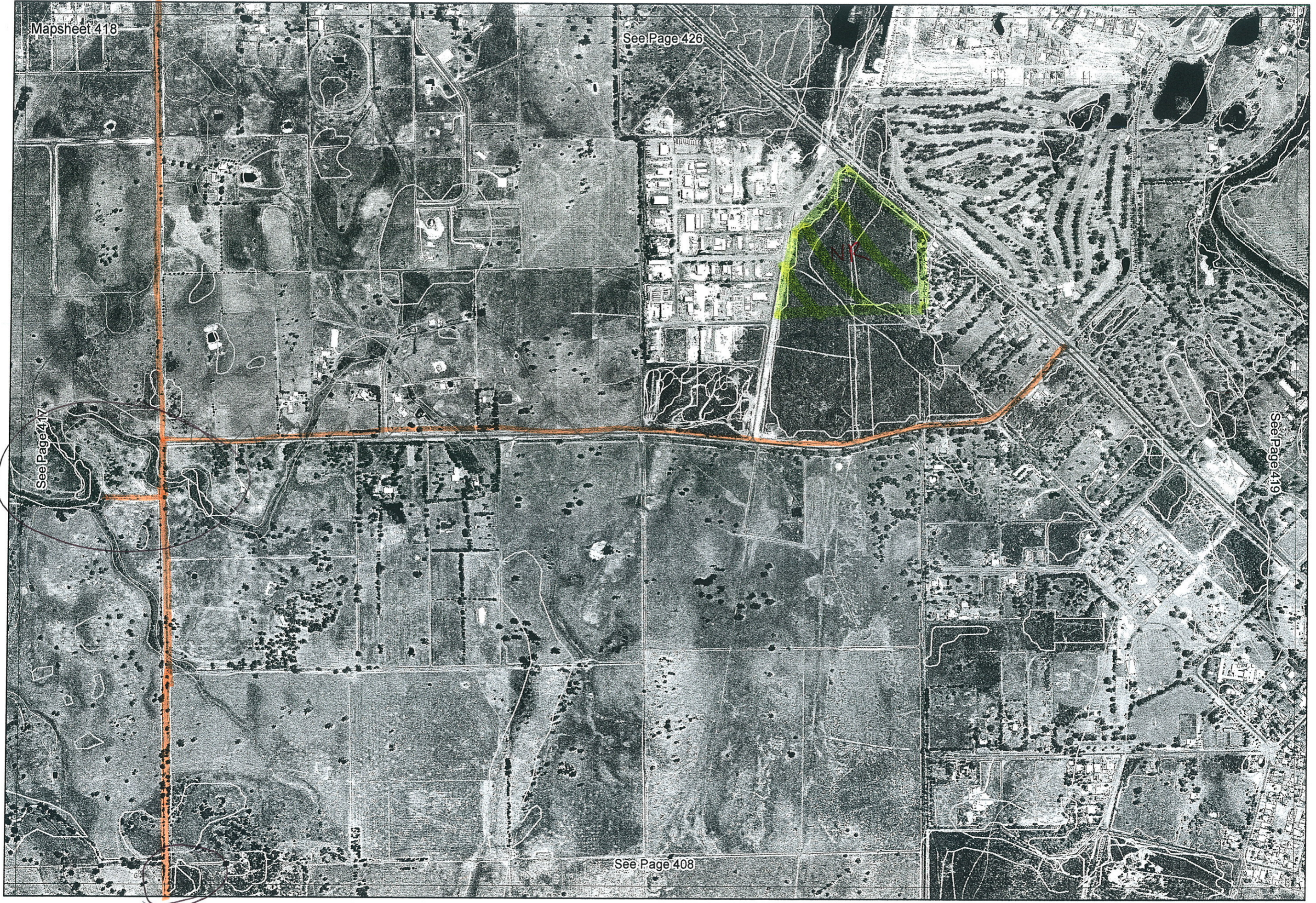
grove

Pollard St ↓

Anderson Rd

Hampton Rd

↑ Beacham Rd  
Curtis Rd



route travelled 22/9