

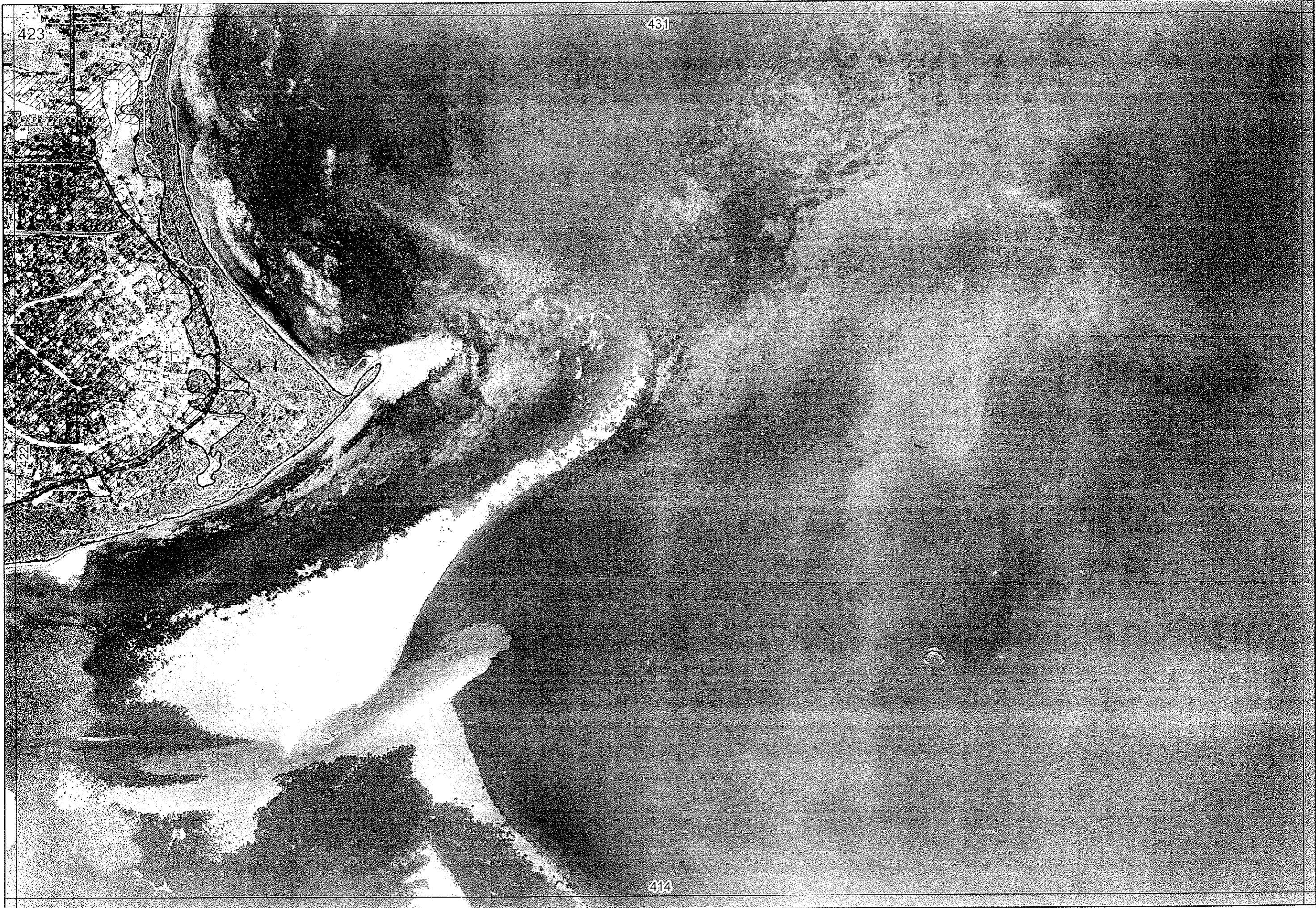
423

431

422

414

Sent to Aq



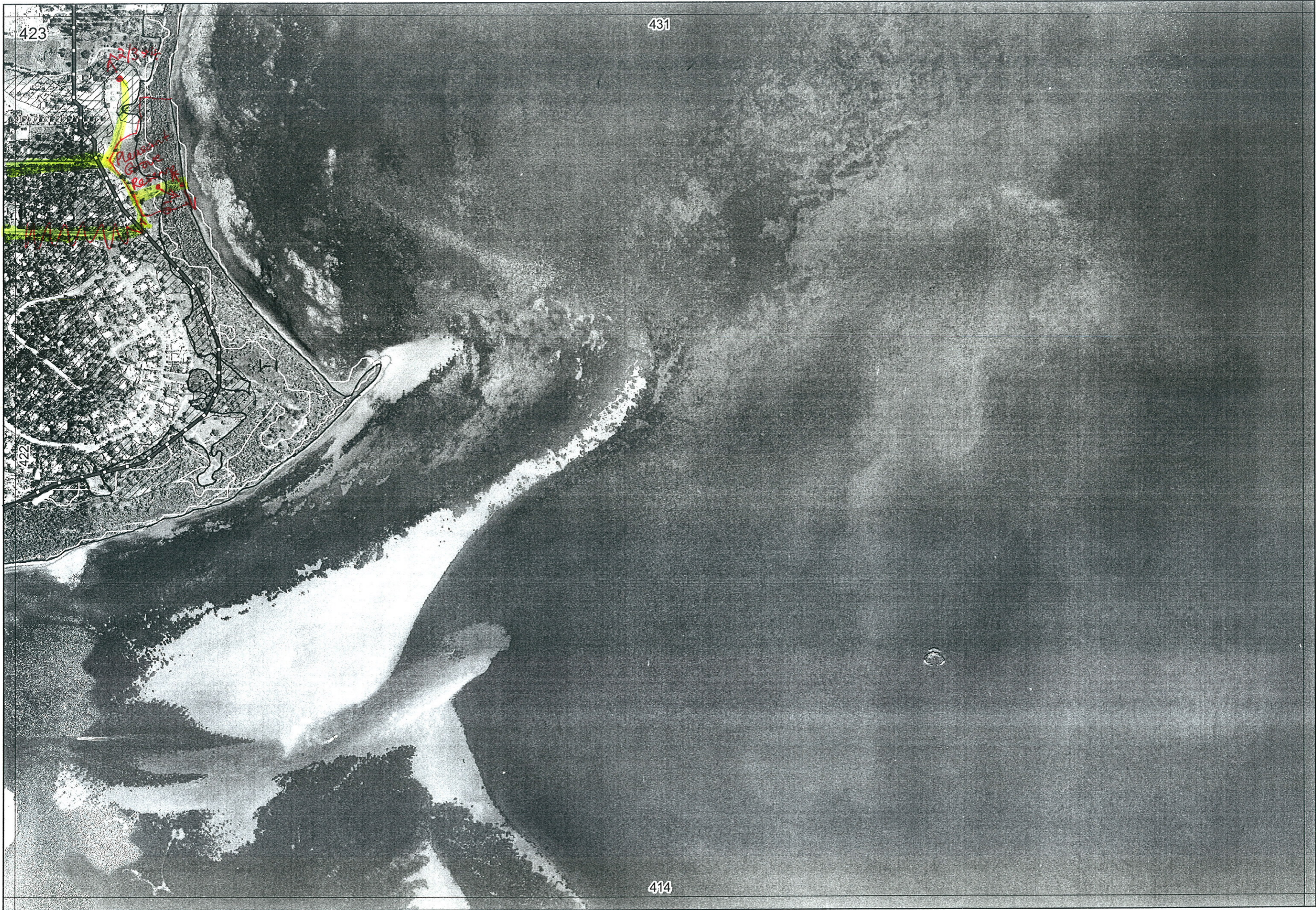
423

431

422

414





423

431

422

414



R E M	RE M2	XM AP	LIN TYPE	L I N E A R	M L U	U N I T S	U P L A N D ?	W E T L A N D ?	V I S I T ?	DETAIL/ Area Name	VEG CON	Field date 200_	OBS From	YNOTASS	D E T V I S R E Q D	COMMENTS	VEG STRUC/ DENS	FCT	DOMINANTS		
																			1	2	3
1	1	Y	Foreshore estuary	Y	M ₉ S	H ⁺	Y	Y		Peel Reg Sc-ROS Pleasant Grove court case	VG- Ex	14/7	edge/ transect	-	?	Wannanup Foreshore Reserve - Bushland Conservation Area	F W		Mel rha Melcut	Melunc? Junkrau	Casobes some Meluha
																lot of Kungla, Jackstern & Hempung/In (upright/lab)	F		Kungla	Jackstern	Banatt
																Pelican "colony" at point	F		Vinjunc	Akasal	Jackstern
																Kungla unit (D-G) along walk trail (was once Banatt woodland/forest)					
																Orange beaked large tern			Shrubland < 1m > 50%		Regoil, Ast aff, Cas, Melunc Spp? (can't see properly)
																		Sh < 1m > 50%		Sampivrespp	
																*Euphleria along walk trail on northern margin from fill	F		Melcut	Junkrau	
2	1	N	POS	Y	S	1	Y	N	Y	Arnold Basset Scarf Park	ED- D	14/7	edge	-	N		F		Fuscal	Euc nar	

Summary/General Comments