



440/2-1
↑

1-1
↑

440/2-4
↑

4-1
↑

431

431

440

430

432

423

↓ 423/1-1

↑ 1-1

→
→

7-1

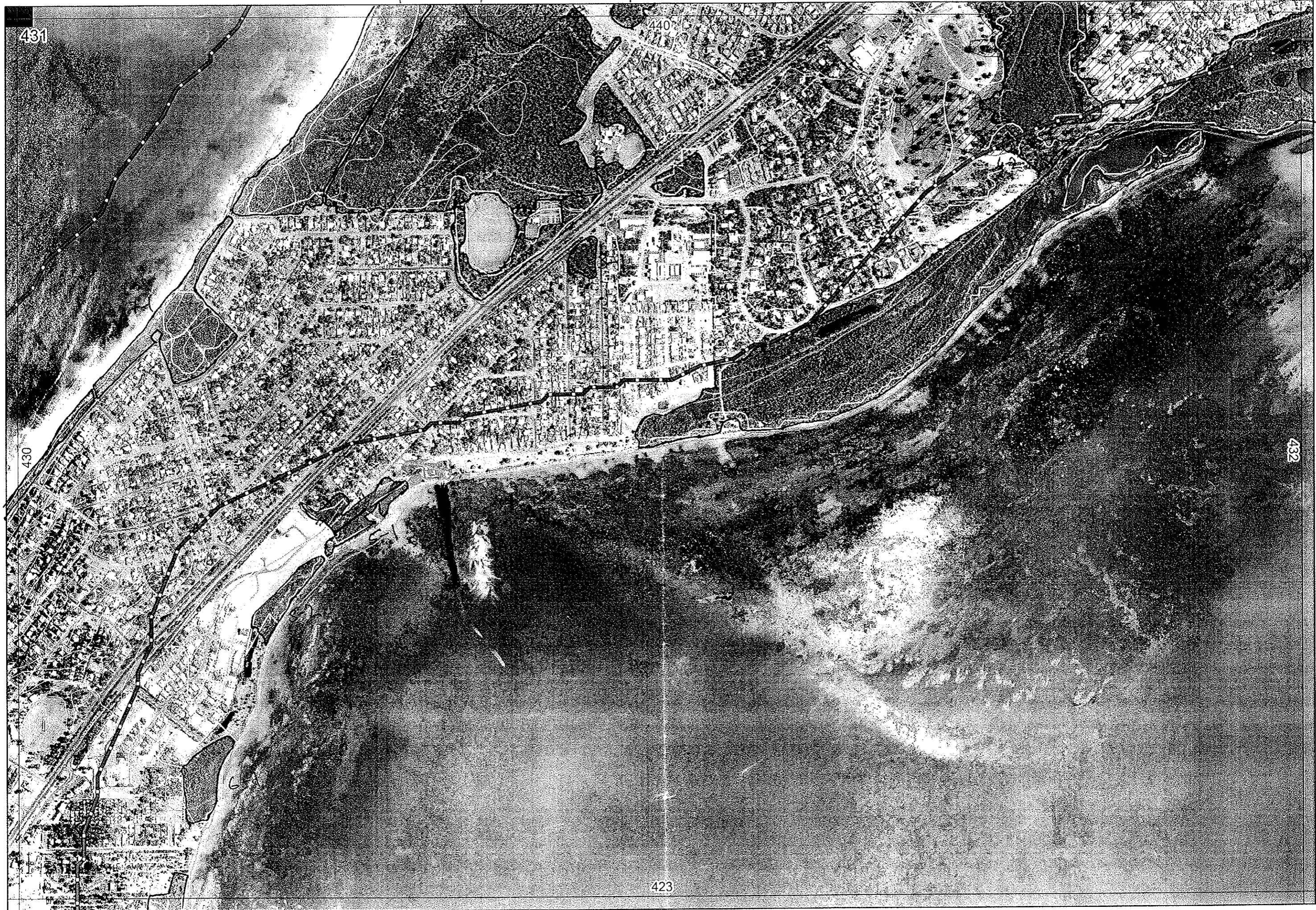
5-2

5-1

6-1

4-3

4-2



431

430

432

423

440/2-1
↑

1-1
↑

440/2-4
↑

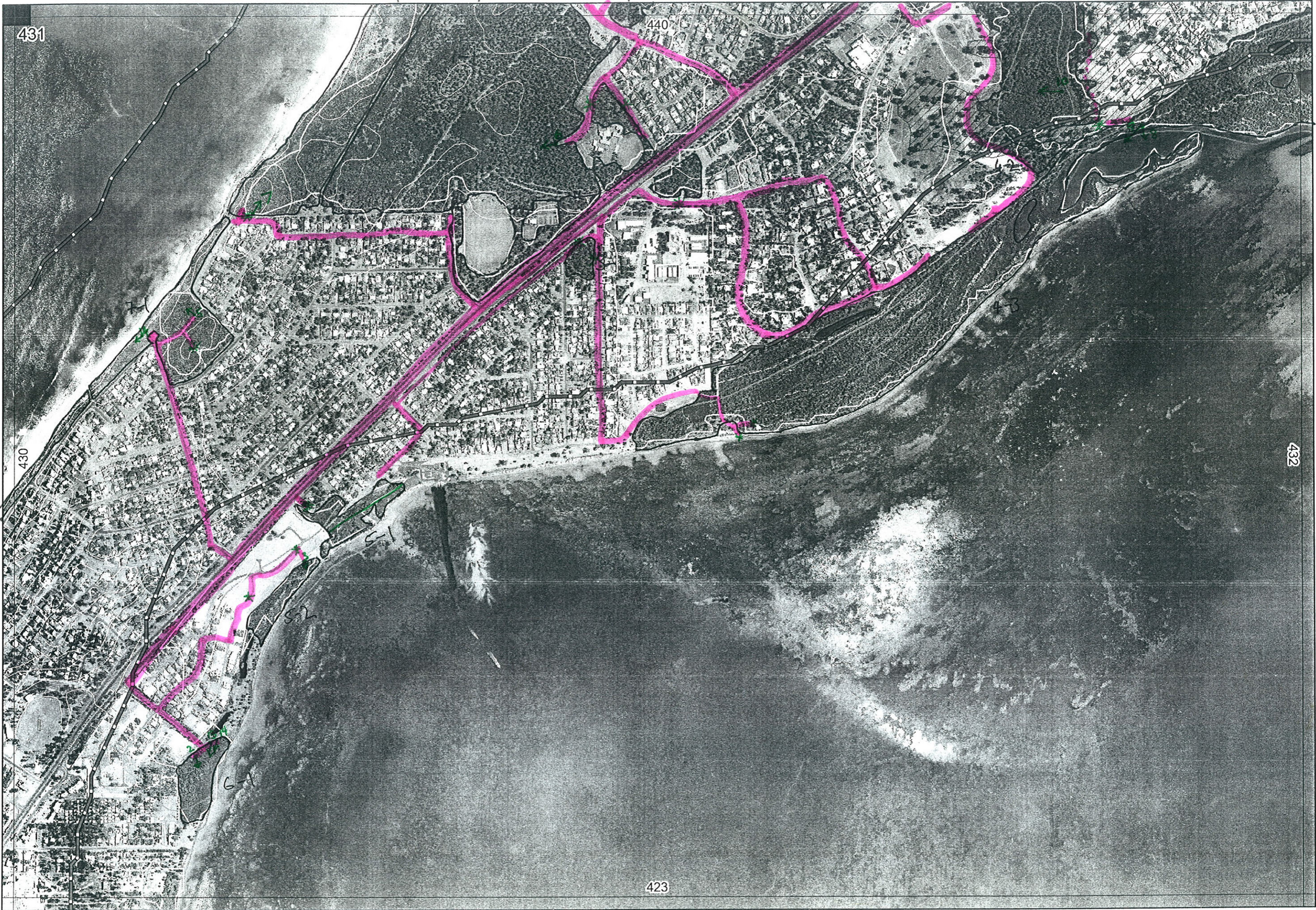
4-1
↑

Sent to Ag

↓ 423/1-1

↑ 430

→
→



R E M	R E M 2	X M A P	L I N E T Y P E	L I N E A R	M L U	U N I T S	U P L A N D ?	W E T L A N D ?	V I S I T ?	D E T A I L / A r e a N a m e	V E G C O N	F i e l d d a t e 200 <u>0</u>	O B S F r o m	Y N O T A S S	D E T V I S I O N R E C O R D	C O M M E N T S	V E G S T R U C / D E N S	F C T	D O M I N A N T S		
																			1	2	3
1	1	✓			Q/S	2	✓	✓	✓		3.3	5/5	within			Banatt, Allfra over Hibhyp P4. Variable cond-degraded.	F		Banatt	Allfra	
1	2				S	1	✓									Butcherbird, Wattlebird, Tuart excellent cond (2)	F TS		Eucgom Acaros	Allfra Oleasl	Eucsp.
2	1				S	1	✓			Dorothy Reserve	3.7	5/5	edge			Scattered marri	F		Banatt	Acasal	Eucal
3	1				S	1	✓			Dorothy Reserve	3	5/5	edge			odd Eucal	F		Banatt	Allfra	
1	2				S	1	✓				3.3	5/5	edge			over hibhyp	F		Banatt	Allfra	
4	1				S	2	✓	✓	✓		4.3	5/5	within			Tuart over parkland cleared around edge. P10 Melrha over sedge sp. C	F		Melrha		
4	2				S	1	✓				5.3	5/5	distance			Some zamias in understory, few scattered Bangra	F		Melrha Eucrud		
4	3	✓	foreshore	✓	M	3		✓	✓	Len Howard Conserv. Park	2.3	5/5	within			Juncos kraussii, ficina nodosa odd Melrha over top FORESHORE	S		Junkra	Ficnod	
												5/5	within			Sp. E-sedge, (Sp. F) Kunqla grey fantail, gerygone, PLP	F		Melrha	Sp Kunqla	
												5/5	distance			swallows.	S/H		Somphines	sedge sp.	
5	1		foreshore	✓	M	2		✓		Harvey Estuary foreshore	3	5/5	dist			over samphine. over sedges away from water. Sp. D pied cormorants, Sp. D darters pelican	W		Allfra	Melrha	Sp. D Jacfar yellow flowers
5	2				M	2		✓		"	3.3	5/5	dist			over sedges.	W				
6	1				M	2		✓		Lot 501 - streetsmart (Bron?)	2	5/5	edge/within			P3 - Acasal, Eucrud. concrete track thru, grass under over samphines, Melrha lot dead P13,14 over Sp. C sedges Sp. D. Sp. D also had P2 (red con)	W/S				
7	1				Q/S	2	✓			Eldora Reserve	3.3	5/5	within			goshawk. Foreshore, sword sedge coming in erosion control. Variable cond (-5) P4	M				

431/4-3
 Add Black Ducks, Little Black Cormorants, Little Pied Cormorants, Darters to comments

Summary/General Comments

3 5/5 within silvereyes, P5, TSA Acaros Spyglo Rhobac

R E M	R E M 2	X M A P	L I N E T Y P E	L I N E A R	M L U	U N I T S	U P L A N D ?	W E T L A N D ?	V I S I T ?	D E T A I L A r e a N a m e	V E G C O N	F i e l d d a t e 200	O B S F r o m	Y N O T A S S	D E T V I S R E Q D	C O M M E N T S	V E G S T R U C / D E N S	F C T	D O M I N A N T S		
																			1	2	3
1	1	✓			Q/S	2	✓	✓	✓		33	5/5	within			Banatt, Allfra ^{disturbed} PH, variable sand	F		Banatt	Allfra	
1						1										submerged halophyte, Tuart excellent mud (2)	F		Eucgom Acaros	Allfra oleari	Eucsp.
2	1				S	1	✓			Dorothy Reserve	37	5/5	edge			Scattered mang	F		Banatt	Aca sal	Euc cal
3	1				S	1	✓				3	5/5	edge			odd Euc cal	F		Banatt	Allfra	
1	2				S	1	✓				33	5/5	edge			over hblhyp	F		Banatt	Allfra	
4	1				S	2	✓	✓	✓		43	5/5	within			Tuart over parkland cleared around edge. P10 Melrha over sedge sp. C	F		Melrha		
4	2				S	1	✓				53	5/5	distore			Some samphire understory, few scattered Kunqla	F		Eucrad		
4	3	✓	foreshore	✓	M	3		✓	✓	Len Howard Coast Park	23	5/5	within			Tuncos kraussii, Ficina nodosa odd Melrha over top FORESHORE	S		Tunkra	Fic nod	
												5/5	within			Sp. E sedge (Sp F) Kunqla grey fantail, gerygone, PIP	F		Melrha	Sp Kunqla	
												5/5	distore			swallows.	S/H		samphires	sedge sp.	
5	1		Coreshore	✓	M	1	✓	✓		Harvey Estuary Coreshore	3	5/5	dist			over samphire, over sedges away from water. pelican pied cormorants, darker pelican	W		Allfra	Melrha	Jacqur prickly, tall, straggly yellow flowers
5	2				M	2		✓		"	33	5/5	dist			over sedge.	W		Melpre	Allfra	Melrha
																P3 - Aca sal, Eucrad, unreluctant tree, grass under over samphires, Melrha bit dead	F		Allfra	Aca sal	
6	1				M	2		✓		1st Sol. Struckemant (Bio?)	2	5/5	edge/ within			P13, over Sp. C sedges Sp. D. also had P13	W/S		Melrha	Allfra	Mel cat
7	1				Q/S	2	✓			Eldora Reserve	33	5/5	within			grassland, forest, sword sedge coming in erosion control, variable sand (-5) PH	M		Oleari	Scacra	Spilan

Summary/General Comments

3 5/5 within sump, P5, TSM, Acaros, Spagho, R. mang.