

✓ 434

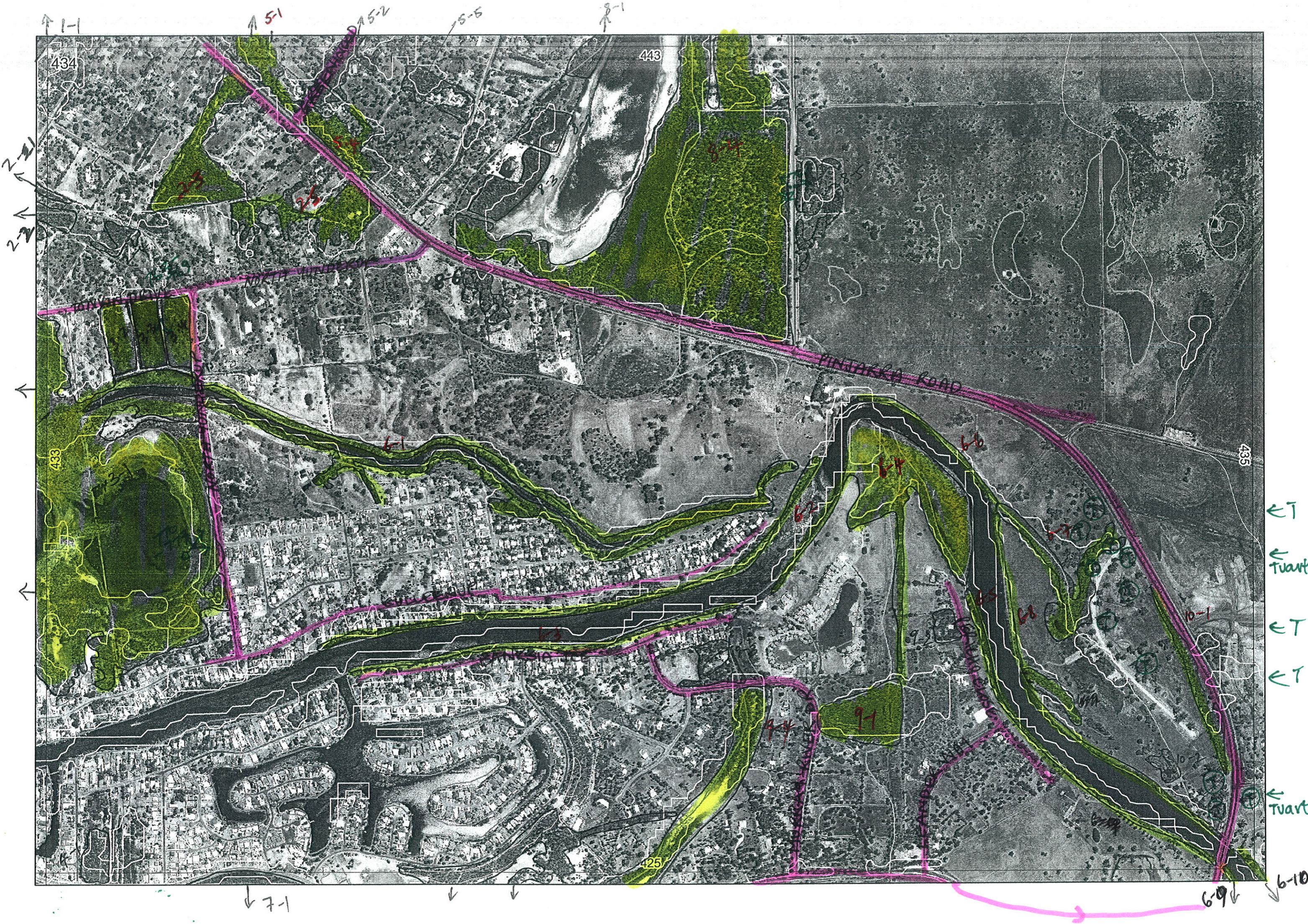


(this is all one remnant,  
so call it 434 11-6)

on Map 426 Dec 9/2/06

Please see insert





R E M	RE M2	XM AP	LIN TYPE	L I N E A R	M L U	U N I T S	U P L A N D ?	W E T L A N D ?	V I S I T ?	DETAIL/ Area Name	VEG CON	Field date	OBS From	YNOTASS	D E T V I S R E O R D	COMMENTS	VEG STRUC/ DENS	FCT	DOMINANTS		
																			1	2	3
1	1	✓			B							29/11				See Map Sheet <del>443/4</del> + 442					
2	2	✓			B	1		✓			4.7		Dist						Melvha	Eucrud	
2	3				B	1	✓				4.3		Edge			+ Kungla, Macreï, planted Aust. natives.			Banatt.	Evccal	
2	4				B	1		✓			5		Dist						Melvha	Eucrud	
2	5				B	1	✓				4		Edge			+ Sti lat.			Allja	Evemar	Nuyflo
3	1	✓			B	4	✓	✓			2		Within	✓		+ jacfur, Acasal, watsonia			Casobe	Eucrud	Melvha.
																			Expect Bangra		
																			Sapphire		
4	1	✓			M	1		✓			5		Edge			For Sale - Proposed Subdivision + kungla, jacfur, Watsonia			Eucrud		
4	2	✓			M	1					5		Edge			Same as 4-1.			Eucrud		
5	1	✓			B	1	✓				4.7		Edge			+ kungla.			Evccal	Banatt	
5	2	✓			B	1	✓				3.7		Edge			+ Banili, Allja, kungla,			Evemar	Evccal	Banatt.
5	3				B	1	✓				4.7		Edge			+ kungla.			Banatt.	Bangra	
5	4				B	1	✓				4.7		Edge						Evccal	Evemar	Bangra.
5	5				B	1	✓				5		Edge			+ kungla, exotrc plantings			Banili	Banatt	Allja
6	1		F/shore	✓	M	3		✓						No Access							

Summary/General Comments

Delete 2-1, 9-3, 10-2, 8-6, 9-2.



3

R E M	RE M2	XM AP	LIN TYPE	L I N E A R	M L U	U N I T S	U P L A N D ?	W E T L A N D ?	V I S I T ?	DETAIL/ Area Name	VEG CON	Field date	OBS From	YNOTASS	D E T V I S I O N	COMMENTS	VEG STRUC/ DENS	FCT	DOMINANTS		
																			1	2	3
6	10		F/shore	✓		M		✓				29/11			No Access	(most of this remnant encroaches onto map 426 but all relevant data entered here on datasheet 434) Dec 9/2/06 See Map Sheet 425					
7	1	✓																			
8	1	✓			B	2		✓							No Access	✓					
8	2				B	3		✓							No Access	✓					
8	3				B	3		✓							No Access	✓					
8	4	✓			B	4	✓	✓		Black Lake NR	2-7		Edge		✓	+ Kunzea, Viminaria, Acausal				Evccal	Allfra
8	5				B	2	✓	✓							✓	+ Hakea sp., Vinjun,				Melvha	Everud
9	1				M	2		✓					Edge		✓	+ Viminaria (dense), grass?				melvha	Everud

Summary/General Comments

Swan Bioplan Vegetation Mapping Data

REM	RE M2	XM AP	LIN TYPE	LINEAR	MLU	UNITS	UPLAND?	WETLAND?	VISIT?	DETAIL/ Area Name	VEG CON	Field date 200_	OBS From	YNOTASS	DETVISRECD	COMMENTS	VEG STRUC/DENS	FCT	DOMINANTS		
																			1	2	3
9	4	✓	Flshore	✓	M	2		✓			33		Edge			melvha over open water			Melvha	Eucrud	
9	5	✓			M	2		✓			5		Edge			+ Kungla, jacjur, melami, Watsonia, Lovegrass, Veldt.			Sedgls	Eucrud	
9	6				M	2		✓			4-7		Edge			+ regenerating mellat, old gravel pit			Eucrud	Melvha	
9	7		Road	✓	M	2		✓			5		Edge			Regrowth after clearing some plantings + Kungla, Jacjur, Melami, Watsonia, Veldt, Lovegrass			Eucrud		
10	1		Road	✓	B	2		✓					?								
3	2				B	2		✓			2		Edge			+ Jacjur, Arasal, Penell, Wetland mosaic			Melpre	Eucrud	
3	3				B	2		✓			2					Same as 3-2					
3	4				B	2		✓			2					Same as 3-2					
11	1		Road	✓	B	2		✓	✓		4		Dist			+ Kungla.			Euccal	Melvha	

Summary/General Comments

Delete 9-2, 9-3

5

Map Sheet Number 434

Pre Field Recorder(s) BWB

Field Recorder(s) BR/SM

Swan Bioplan Vegetation Mapping Data

REM	RE M2	XM AP	LIN TYPE	LINEAR	MLU	UNITS	UPLAND?	WETLAND?	VISIT?	DETAIL/ Area Name	VEG CON	Field date 2005	OBS From	YNOTASS	DETVISREQD	COMMENTS	VEG STRUC/DENS	FCT	DOMINANTS			
																			1	2	3	
11	2				B	1		✓			4-7		DIST.			Too far			Everud	Melrha		
11	3				B	1		✓			4-7		DIST			Too far			Everud	Melrha		
11	4	✓			B	1		✓		Combined these three remnants to become 11-6 BR 8/2/06	4-7		DIST		Too far			Everud	Melrha			
11	5	✓			B	1		✓			4-7		DIST		Too far			Everud	Melrha			
11	6	✓			B	1		✓			4-7		DIST		Too far (combination of 11-4, 11-5, 11-6)			Everud	Melrha			
12	1		Channel	✓	B	1		✓				5-7		NO ACCESS								
12	2				B	1		✓			5-7		NO ACCESS									

Summary/General Comments

Entered  
27/1/06.

REMNANT-PART NO	NON-LINEAR Y/N	LINEAR PLUS-TYPE	CROSSES MAP SHEET BOUNDARY (Y/N)	FIELD VISIT REQ YES/NO	FIELD DATE	LOCAT. OBSERV.	WETLAND VEG (Y/N)	SIM REM	DETAIL (Y/N)	VEGETATION CONDITION	VEGETATION/PREVIOUS INFO
1-1			Y	N							
<del>2-1</del>	Y	Boundary	Y								
2-2			Y	Y	29/11	distance	Y		NN	SD	Melrha Eucrod
2-3			Y	Y	29/11	edge	N		NN	G-D	Eucal Kongka Macraei (planted Aus natives) Banatt
2-4			Y	Y	29/11	distance?	Y		NN	D	Melrha Eucrod
2-5			Y	Y	29/11	edge	N		NN	G	Nuyflo Strait Allfra Eucmar
3-1			Y	Y	29/11	inside	Y			EX-VG-G-D	Sampric, Casdae, Eucrod, Jacfur, Melrha, Watsonia Aca sal
4-1			Y	Y	29/11	edge	N			D (For sale G. an, proposed subby)	Euc rudis, Kunz glab, Jacks? Euc, Watsonia
5-1			Y	Y	29/11	edge				D-G (cockatoo breeders)	Euc cal, Kunz glab, Bank. aff
5-2			Y	Y	29/11	edge				G-VG (Land for wildlife stan)	Euc marg, B. atten, B. illic, Allo frags, Kunz glab, Euc cal
5-3			Y	Y	29/11	edge				D-G	B. atten, B. grand, Kunz glab
5-4			Y	Y	29/11	edge	N			D-G	Euc cal, Euc marg, Bank grand
5-5			Y	Y	29/11	edge				D	Kunz glab, B. illic, Batten, Allo frags, exotic plantings
6-1	Y	River		Y							
6-2	Y	River		Y							
6-3	Y	River		Y							
6-4		River		Y	29/11	dist.	Y				
6-5	Y	River		Y							
6-6	Y	River		Y							
6-7	Y	creek		Y	29/11	edge	Y				
6-8	Y	River		Y							
6-9	Y	River	Y								
6-10	Y	River	Y								
7-1			Y								
8-1			Y								
8-2			Y								
8-3			Y								
8-4 Black Lake NA			Y	Y	29/11	edge	Y+upland		Y	VG-E	Euc cal, Allo frags, Kunz glab + wetland Mel rhaps, Vimin Aca sal,
8-5			Y		29/11	edge	Y			VG	Mel rhapsio, Mabea? rusci, Vimin, open water, Euc rud
8-6			Y		29/11	edge				CD	garden planted exotics.
9-1			Y	Y	29/11	edge	Y			G	Mel rhapsio, grass Euc rudis, Viminoria, vi dense
9-2			Y	Y	29/11	edge	Y			CD	blue gum plantation.
9-3			Y	Y	29/11	edge	Y			CD	planted exotics
9-4	Y	River	Y	Y	29/11	edge	Y			VG-G	Mel rhapsio over open water, Euc rudis, sedges
9-5	Y	creek load	Y	Y	29/11	edge	Y			D	same as 9-7
10-1	Y	ROAD	Y	Y							
10-2			Y								
9-6			Y	Y	29/11	edge	Y		Y?	D-Good (regenerating)	Mel latertia, Euc rudis, Mel rhaps (+ gravel pit),
3-2			Y	Y	29/11	edge	Y			EX	Melprc, Jacfur, Aca sal, Perell wetland mosaic Eucrod
3-3			Y	Y	29/11	"	Y			EX	
3-4			Y	Y	29/11	"	Y			EX	
9-7	Y	creek	Y	Y	29/11	edge	Y			D (re-growth after clearing, some plantings)	Kunz glab, Jacks, Mel amillaris, Euc rudis, Watsonia, longvoss, Veldt, wild cats
4-2			Y	Y	29/11	edge	Y			D	same as 4-1
NOTES 1-1	Y	? road res	Y	Y	29/11	distance	Y			G	Euc cal, Mel rhaps, Kunz glab
2			Y	Y						SD (can't see)	Euc rud, Mel rhapsio
3			Y	Y						"	"
4			Y	Y						"	"
5			Y	Y						"	"
6			Y	Y						"	"

SEE NEW DATA SHEET