

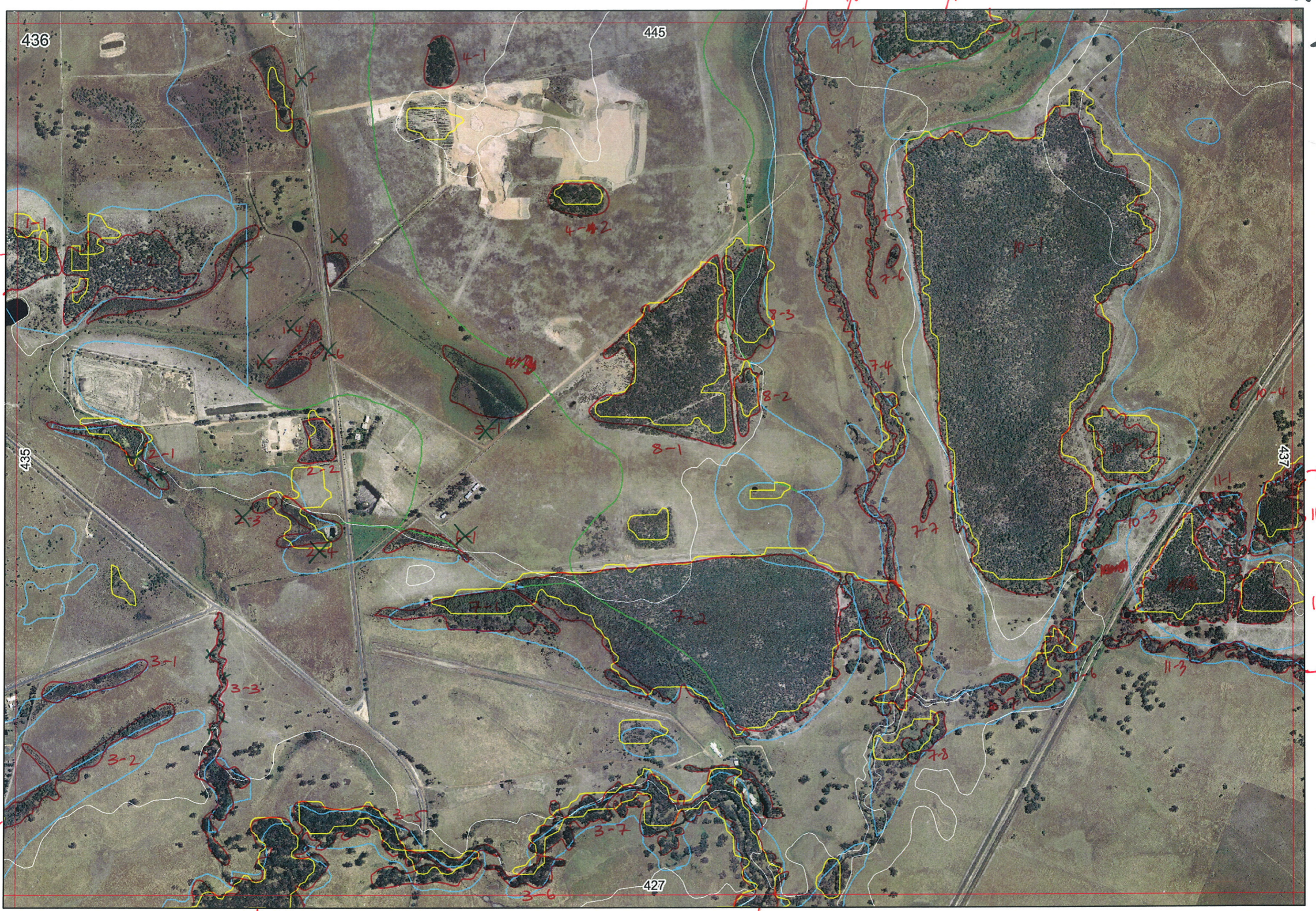
✓ 436



3-3 = 3-3 + 3-4 + 3-5 + 3-6 + 3-7  
7-8 = 7-8 + 7-3 + 7-4 + 10-7 + 10-6

11-3 = 11-3 + 11-1 + 11-4

Ag



→ 11-2  
 → 11-4  
 →

↓ 3-4  
 78 73 74 107 106  
 ↓

EEEA.

Map Sheet Number 436

Pre Field Recorder(s) Bamb

Field Recorder(s) SM

Swan Bioplan Vegetation Mapping Data

R E M	RE M2	XM AP	LIN TYPE	L I N E A R	M L U	U N I T S	U P L A N D ?	W E T L A N D ?	V I S I T ?	DETAIL/ Area Name	VEG CON	Field date 200_	OBS From	YNOTASS	D E T V I S R E Q D	COMMENTS	VEG STRUC/ DENS	FCT	DOMINANTS		
																			1	2	3
1	1	✓			B	1	✓				47	29/11	Dist			+ xanbru, Nuyflo			Banili	Banatt	Alyfra
1	2				B	1	✓				47		Dist			+ xanbru, nuyflo.			Banili	Banatt	Alyfra
1	3		Channel	✓	B	2	✓				6		Dist						Melha		
																			Junpal		
✓	1	4	Channel	✓	B	1	✓				6		Edge						Junpal		
1	5					1	✓				6		Edge						Junpal		
1	6		Channel	✓	B	1	✓				6		Edge						Jupal		
1	7				B						6		Edge						Everud	Melha	
						2	✓												Junpal		
2	1				B	1	✓				5		Dist						Melha	Melpre	
2	2				B	1	✓				5		Edge			+ Nuyflo, Jacjur Xangra planted Agoflé	W		Banatt	Banili	Banmen
3	1		Channel	✓	B	2	✓				5.3		Edge						Everud		
																			junpal		
3	2	✓	Channel	✓	B	2	✓				47		Dist						Melha		
																			junpal		
3	3		Channel	✓	B	2	✓				4		Edge						Melha	Everud	
4	1				B	1	✓				5		Dist			+ Nuyflo, Banili			Everud	Banatt	Alyfra

Summary/General Comments: Delete all previous data & re-enter this sheet

2

Map Sheet Number 436

Pre Field Recorder(s) Bomb (AR)

Field Recorder(s) SM

Swan Bioplan Vegetation Mapping Data

R E M	RE M2	XM AP	LIN TYPE	L I N E A R	M L U	U N I T S	U P L A N D ?	W E T L A N D ?	V I S I T ?	DETAIL/ Area Name	VEG CON	Field date 200_	OBS From	YNOTASS	D E T V I S I O N R E Q D	COMMENTS	VEG STRUC/ DENS	FCT	DOMINANTS		
																			1	2	3
4	2				B	1	✓									Expect same as 4-1.					
7	1				B	2		✓			3		Dist		✓				Melba	Everud	Melpre.
7	2				B	3	✓	✓			3		Dist		✓	Same as 7-1 + upland.					
7	5		Channel	✓	B	1		✓						No Access							
7	6					1		✓						No Access							
7	7		Channel	✓	B	1		✓						No Access							
7	8		Channel	✓	B	4	✓	✓						No Access	✓						
7	3				B	1		✓													
8	1				B	2		✓						No Access							
8	2				B	2		✓						No Access							
8	3				B	2		✓						No Access							

Summary/General Comments

Map Sheet Number 436

Pre Field Recorder(s) Baab

Field Recorder(s) SM

Swan Bioplan Vegetation Mapping Data

R E M	RE M2	XM AP	LIN TYPE	L I N E A R	M L U	U N I T S	U P L A N D ?	W E T L A N D ?	V I S I T ?	DETAIL/ Area Name	VEG CON	Field date 200_	OBS From	YNOTASS	D E T V I S R E Q D	COMMENTS	VEG STRUC/ DENS	FCT	DOMINANTS		
																			1	2	3
9	1	✓			P	2	✓							No Access	✓						
9	2	✓			P	1	✓							No Access							
10	1				B	3	✓	✓						No Access	✓						
10	2				B	1	✓							No Access							
10	3		Channel	✓	B	2	✓	✓						Not visited							
10	4		Road	✓	P	1	✓							Not visited							
11	2	✓			P	1	✓							Not visited							
11	3	✓	Channel	✓	P	2	✓	✓						Not visited							

Summary/General Comments

Entered  
13/11/05

REMNANT-PART NO	NON-LINEAR	LINEAR PLUS	CROSSES MAP SHEET BOUNDARY (Y/N)	FIELD VISIT REQ YES/NO	FIELD DATE	LOCAT. OBSERV.	WETLAND VEG (Y/N)	SIM REM	DETAIL (Y/N)	VEGETATION CONDITION	VEGETATION/PREVIOUS INFO
1-1			Y	Y	29/11	distance	N		Z	> D	same as 1-2
1-2				Y	29/11	distance	N		Z	> D (too far)	Xan/bru Bamli Banatt Allfra Nuytlo
1-3	Y	Floodway		Y	29/11	distance	Y			CD	Melrha + Jimpal
1-4				Y	29/11	edge	Y		Z	CD	Jimpal
1-5				Y	"	"	Y		Z	CD	"
1-6				Y	"	"	Y		Z	CD	"
1-7				Y	"	edge	Y		Z	CD	Jimpal Melrha Eucal
1-8				Y	"	"	Y		Z	CD	Jimpal colonized paddock
2-1				Y	"	distance	Y		Z	D	Melrha Melpre
2-2				Y	29/11	edge	N		Z	D	Banmen Banatt Nuytlo Bamli (planted Agolie) Jac Xangra
2-3				Y	29/11	distance	Y		Z	CD	Melrha prev cleared
2-4				Y	29/11	road	Y		Z	CD	Jimpal colonized paddock
3-1	Y	Floodway		Y	29/11	edge	Y		Z	D-CD	Eucal Jimpal colonized paddock
3-2	Y	Floodway	Y	Y	29/11	distance	Y		Z	YD	Melrha, Jimpal
3-3	Y	Stream		Y					Z		
3-4		Channel	Y	Y	29/11	road	Y		Z		channel wetland
3-5	Y	Stream		Y	"		Y				"
3-6	Y	Stream		Y	"		Y				"
3-7	Y	Stream	Y	Y	"		Y				"
4-1						distance	N			D	Eucal Banatt Nuytlo Allfra Bamli
4-2									Z	CD	Jimpal colonized paddock
5-1 (1-5) New				Y	29/11	edge	Y		Z	CD	Jimpal colonized paddock
6-1 (1-6) New				Y	29/11	edge	Y		Z	CD	Jimpal colonized paddock
7-1				Y	29/11	distance	Y				Melrha Eucal Melpre
7-2				Y	29/11	"	Y				" plus 7 upland
7-3				Y							
7-4	Y	Stream	Y	Y							
7-5	Y	Depression									
7-6							Y				
7-7											
7-8											
8-1				Y							
8-2				Y							
8-3				Y			Y				
9-1			Y	Y							
9-2			Y	Y							
10-1				YN							
10-2				Y							
10-3	Y	Drainage line		Y							
10-4							Y				
10-6 (7-8)				Y							
10-7 (7-8)				Y							
11-1 (7-8)				Y							
11-2			Y	Y							

NOTES  
Delete 1-5, 1-6

See New Data sheet

Combined

COMBINE

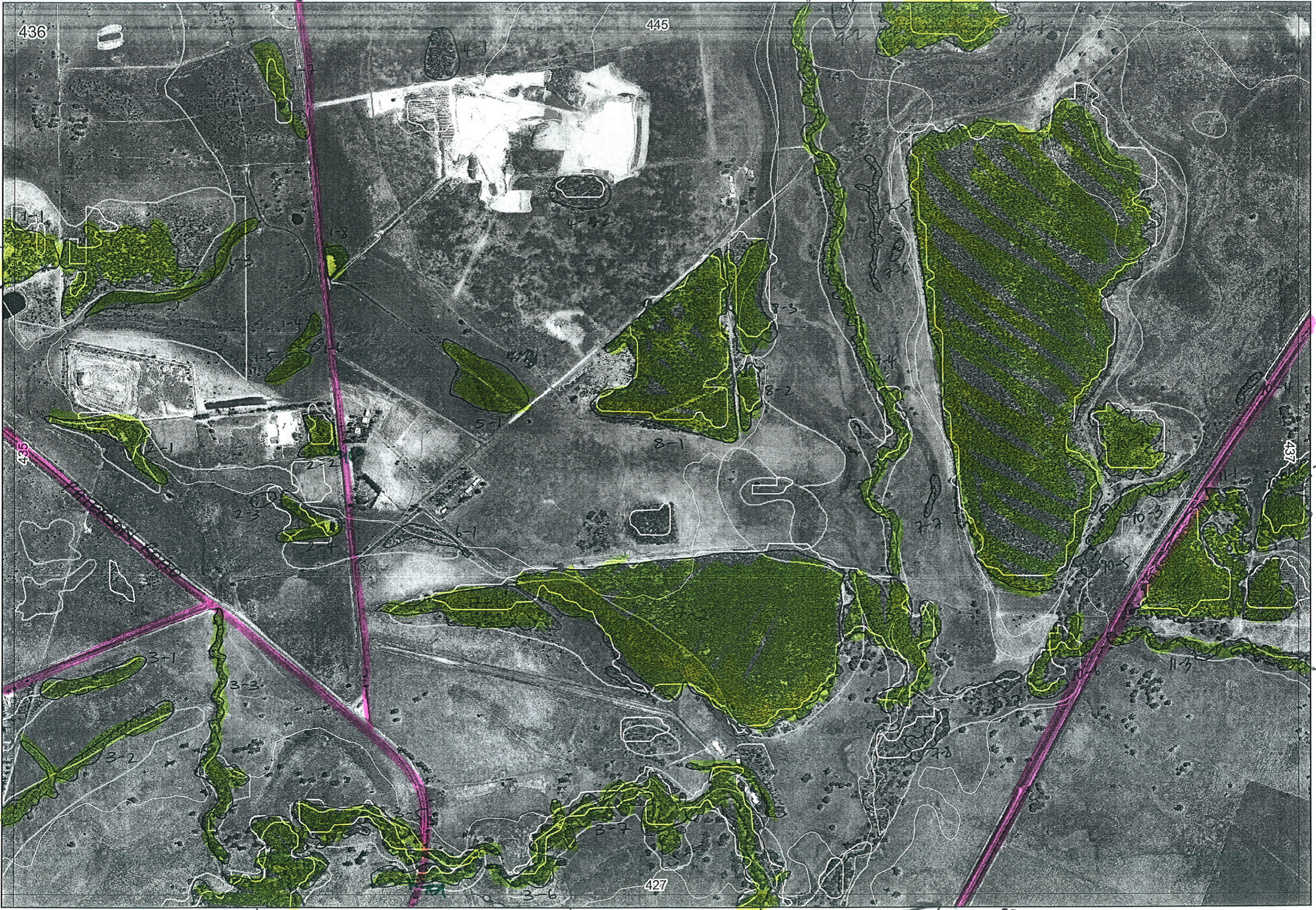
7-8

REMNANT-PART NO	NON-LINEAR	LINEAR PLUS	CROSSES MAP SHEET BOUNDARY (Y/N)	FIELD VISIT REQ YES/NO	FIELD DATE	LOCAT. OBSERV.	WETLAND VEG (Y/N)	SIM REM	DETAIL (Y/N)	VEGETATION CONDITION	VEGETATION/PREVIOUS INFO
11-3 11-4	Y	Drainage line	Y	Y Y							
See New Data Sheet!											
NOTES											

check road cadastre pre field

COLO  
RD.

need to visit 8-1, 7-2, ?10-1



OLD  
MH RD

3-4

longway to intersection of (in Pignora)

UNSCALED TRAIN TRACK?

11-2

11-4

11-3