

Ag



440/
4-1

431/
4-3

↓ 431/4-3

↓ 432/5-1

↓ 432/6-1

442/
2-1
→

442/
4-1
→

442/
4-5
→

Sent to Ag



441

450

440/
4-1

442/
2-1
→

442/
→ 4-1

442/
→ 4-5

2-1

442

11-5

11-4

432

431/
4-3

↓ 431/4-3

↓ 432/

↓ 432/

Map Sheet Number 441

Pre Field Recorder(s) Karen

Field Recorder(s)

Swan Bioplan Vegetation Mapping Data

R E M	RE M2	XM AP	LIN TYPE	L I N E A R	M L U	U N I T S	U P L A N D ?	W E T L A N D ?	V I S I T ?	DETAIL/ Area Name	VEG CON	Field date 200_	OBS From	YNOTASS	D E T V I S R E Q D	COMMENTS	VEG STRUC/ DENS	FCT	DOMINANTS		
																			1	2	3
4	1				S	1	Y	N			D- CD	14/7	dict	-	N	Same as 4-2	F		Eucal	Baratt	
4	2				S	1	Y	N			D- CD	14/7	edge	-	N	Some areas of F Kunjab	F		Eucal	Baratt	
4	3				S	1	Y	N			D- CD	14/7	dict	-	N	Same as 4-2	F		Eucal	Baratt	
4	4				S	1	Y	N		POS?	VG- EX	14/7	edge	-	N		F		Melba	Eucal	over Gahri & over sedges
5	1				M	2	Y	Y													
5	2				M	1	N	Y													
6	1				M	1	N	Y								Photo from other side of channel					
6	2				M	3				Conservation & Foreshore Management S(1)(n) Reserve											
6	3				M	1	N	Y													
6	4				M	1	N	Y													
6	5				M	1	N	Y													
7	1			Y	S	1	Y	N													
7	2			Y	S	1	Y	N													
7	3		road	Y	S	1	Y	N													
7	4	Y	road	Y	S	1	Y	N													
7	5	Y	road	Y	S	1	Y	N													

Summary/General Comments

Map Sheet Number 441

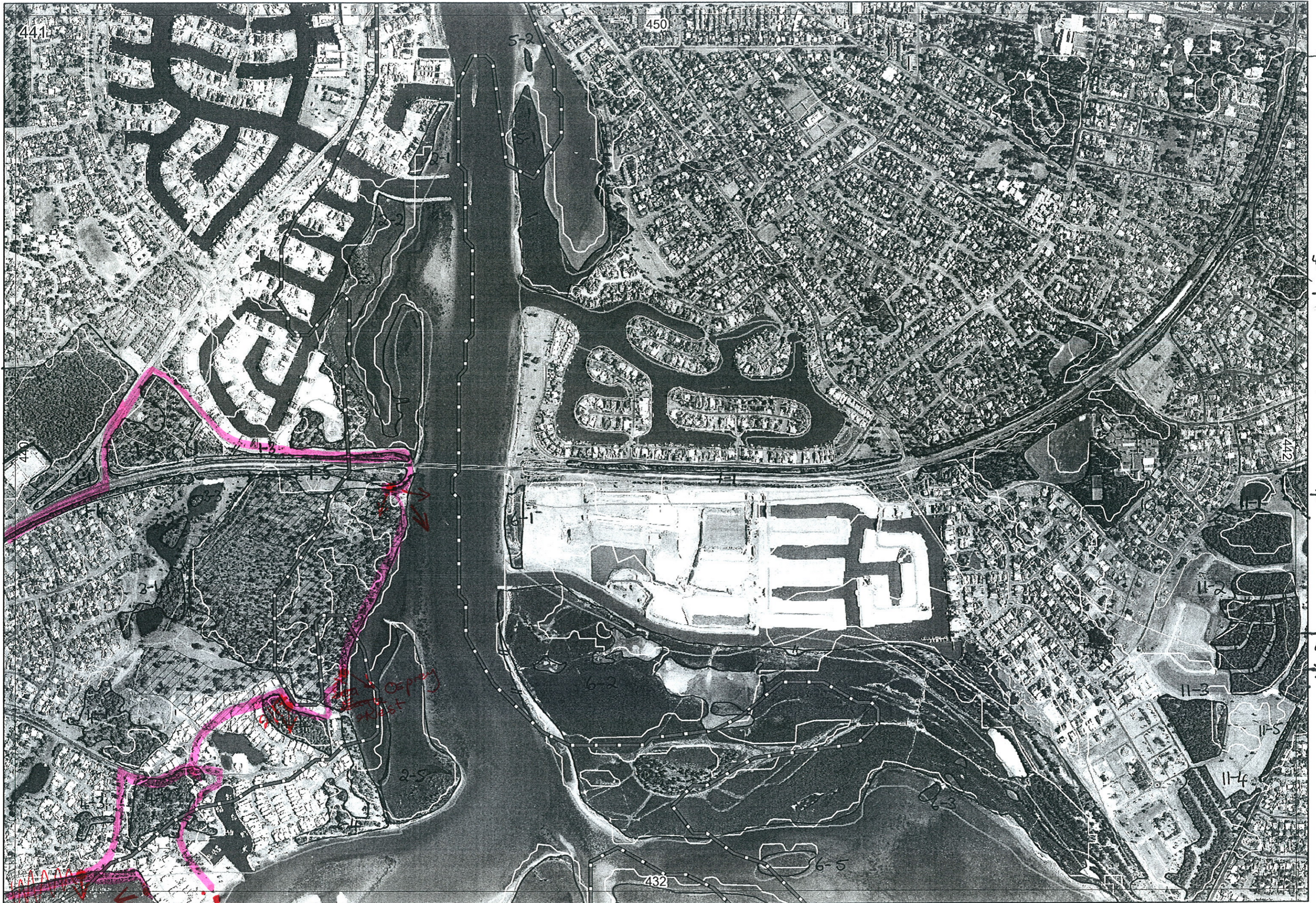
Pre Field Recorder(s) Karen

Field Recorder(s) _____

Swan Bioplan Vegetation Mapping Data

R E M	R E M 2	X M A P	L I N T Y P E	L I N E A R	M L U	U N I T S	U P L A N D ?	W E T L A N D ?	V I S I T ?	D E T A I L/ A r e a N a m e	V E G C O N	F i e l d d a t e 200_	O B S F r o m	Y N O T A S S	D E T V I S R E Q D	C O M M E N T S	V E G S T R U C/ D E N S	F C T	D O M I N A N T S			
																			1	2	3	
8	1				S	I	Y	N														
9	1				S	I	Y	N														
9	2				S	I	Y	N														
10	1				S	I	Y	N														
11	1				S	I	Y	N														
11	2	Y			S	I	Y	N														
11	3				S	I	Y	N														
11	4				S	I	Y	N														
11	5				S	I	Y	N														

Summary/General Comments



441

450

442

432

440/
4-1

442/
2-1
→

442/
4-1
→

442/
4-5
→

431/
4-3

431/4-3

432/1

432/2

DEPT
WEST