

✓ 443



*
*
*

*

61 ←

Delete 8.1

Swan Bioplan Vegetation Mapping Data

R E M	RE M2	XM AP	LIN TYPE	L I N E A R	M L U	U N I T S	U P L A N D ?	W E T L A N D ?	V I S I T ?	DETAIL/ Area Name	VEG CON	Field date	OBS From	YNOTASS	D E T V I S I O R E Q D	COMMENTS	VEG STRUC/ DENS	FCT	DOMINANTS		
																			1	2	3
1	1	✓			B	1	✓				2.7	14/12	Aerial Int	NO ACCESS		Expect same as 1-2 & 1-3.	W				
1	2	✓			B	1	✓				2.7		Edge			+ Banmen, Hibhyp, Dasbro, Xylocc, Acapul.	W		Banatt	Eucmar	Allja.
1	3	✓			B	1	✓				2.7		Edge			"	W		"	"	"
1	4				B	1	✓				3.7		Dist			+ Banmen, Nuyflo	W		Banatt		
1	5	✓			B	1	✓				3.7		Dist			"	W		"		
1	6				W	1	✓				3.7		Aerial Edge			+ Banmen, Xylocc, Kungla	W		Eucmar	Allja.	
2	1	✓			W	4	✓	✓		Conservation Estate	2		Edge	✓		shrub mosaic, Vimjun, jacfur			Melosu		
																			Sedges.		
3	1	✓			B	1	✓				3.7		Dist			+ Xylocc, Jacste, Kungla, Banmen.	W		Eucmar		
3	2				B	1	✓				4		Edge			+ Banmen, Kungla, Acapul, Banatt, adicyg.	W		Eucmar	Allja	Banil.
3	4	✓			B	1	✓				4		Edge			+ Kungla -	W		Bangra.	Eucmar	Eucal
3	5				B	1	✓				4		Edge			+ Allja, Banili	W		Bangra	Eucmar	Banatt
3	6				B	1	✓				3.7		Edge			+ Xylocc, Kungla, Banmen, Hibhyp.	W		Allja.	Eucmar	Banatt.
3	7				B	1	✓				4		Edge			Name as 3-6.	W				
3	8				B	1	✓				4.7		Edge			Kungla, Allja, macrei, Banmen.	W		Allja.		
3	9				B	1	✓				3.7		Edge			Allja, Kungla, Adenanthos.	W		Banatt	Allja	

Summary/General Comments

2

Map Sheet Number 443

Pre Field Recorder(s) Bamb

Field Recorder(s) SM

Swan Bioplan Vegetation Mapping Data

R E M	RE M2	XM AP	LIN TYPE	L I N E A R	M L U	U N I T S	U P L A N D ?	W E T L A N D ?	V I S I T ?	DETAIL/ Area Name	VEG CON	Field date 2005	OBS From	YNOTASS	D E T V I S R E Q D	COMMENTS	VEG STRUC/ DENS	FCT	DOMINANTS		
																			1	2	3
3	10				B	1	✓				3.7	14/7	Edge		+ Kungla	W		Eucmar	Banatt	Banili	
3	11	✓			B	2	✓	✓			2.7		Edge		+ Mellat	W		Melha	Eucrud	N	
3	12				B	1	✓				3.7		Edge		+ Bangra, Xyloc, Banili, Kungla, Adenanthos	W		Banatt	Euccal	Eucmar	
3	13				B	2	✓	✓			3.7		Edge		+ Jacfur, Jacste, Kungla	W		Euccal	Bangra		
3	14	✓			B	2	✓	✓			3.7		Edge		+ Kungla	W		Melha	Eucrud		
4	1	✓			B					Barragrup Swamp					See map sheet 442	W					
4	2				B	2	✓	✓			3		Aerial		Expect mix of wetland & upland spp.	W					
5	1				B	1	✓				3.7		Dist			W		Allfra	Banatt	Eucmar	
6	1	✓	Elshra	✓	N	4	✓	✓		Conservation Estate	3		Aerial	No Access	✓						
7	1				B/W	2	✓	✓			3.7		Aerial	No Access							

Summary/General Comments
Delete 8-1 from Database.

3

Map Sheet Number 443

Pre Field Recorder(s) Banks

Field Recorder(s) SM

Aerial Int BG/ER

Swan Bioplan Vegetation Mapping Data

R E M	R E M 2	X M A P	L I N E T Y P E	L I N E A R	M L U	U N I T S	U P L A N D ?	W E T L A N D ?	V I S I T ?	D E T A I L A r e a N a m e	V E G C O N	F i e l d d a t e 200_	O B S F r o m	Y N O T A S S	D E T V I S I O N R E Q D	C O M M E N T S	V E G S T R U C T U R E D E N S	F C T	D O M I N A N T S		
																			1	2	3
7	2				B/W	2	✓	✓			4		Aerial Int	No Access			W				
7	3				B/W	2	✓	✓			4		Aerial Int	No Access			W				
7	4				B						2		Edge			+ Kungla	F		Evccal	Banatt	
																			Melpre		
7	5				B	1	✓				3		Aerial Int	No Access		Expect upland sp same as 7-6	W				
7	6				B	1	✓				3.7		Dist			+ Kungla			Allfra	Evemar	Bangra
7	7				B	2	✓	✓			2		Edge				F		Banlitt		
					I												F		Evcrud	Melha	
7	8	✓			B	1	✓				5		Aerial Int	No Access							
7	9				W	1	✓				3.7		Edge			+ Xylocc	W		Bangra	Evccal	Evemar
7	10				W	1	✓				3.7		Edge			+ Xylocc	W		Evccal	Banmon	Banatt
7	11				W	1	✓				3.7		Edge			+ Stilat	W		Evccal	Banmon	Banatt
7	12	✓			B	1	✓				3.7		Aerial Int	No Access		Expect same as 7-11	W				
7	13	✓			B						5					Expect same as 7-11 but poorer condition	W				
7	14				W	2	✓	✓			3		Aerial Int	No Access			W				
7	15				W	2	✓	✓			3		Aerial Int	No Access			W				
9	1	✓	Flshore	✓	Riv W						2		Aerial	No Access			W/E				
10	1				B						3		Aerial Int	?			W				

Summary/General Comments

4

Aerial Int B4/BK

Map Sheet Number 443 Pre Field Recorder(s) Barb Field Recorder(s) Barb

Swan Bioplan Vegetation Mapping Data

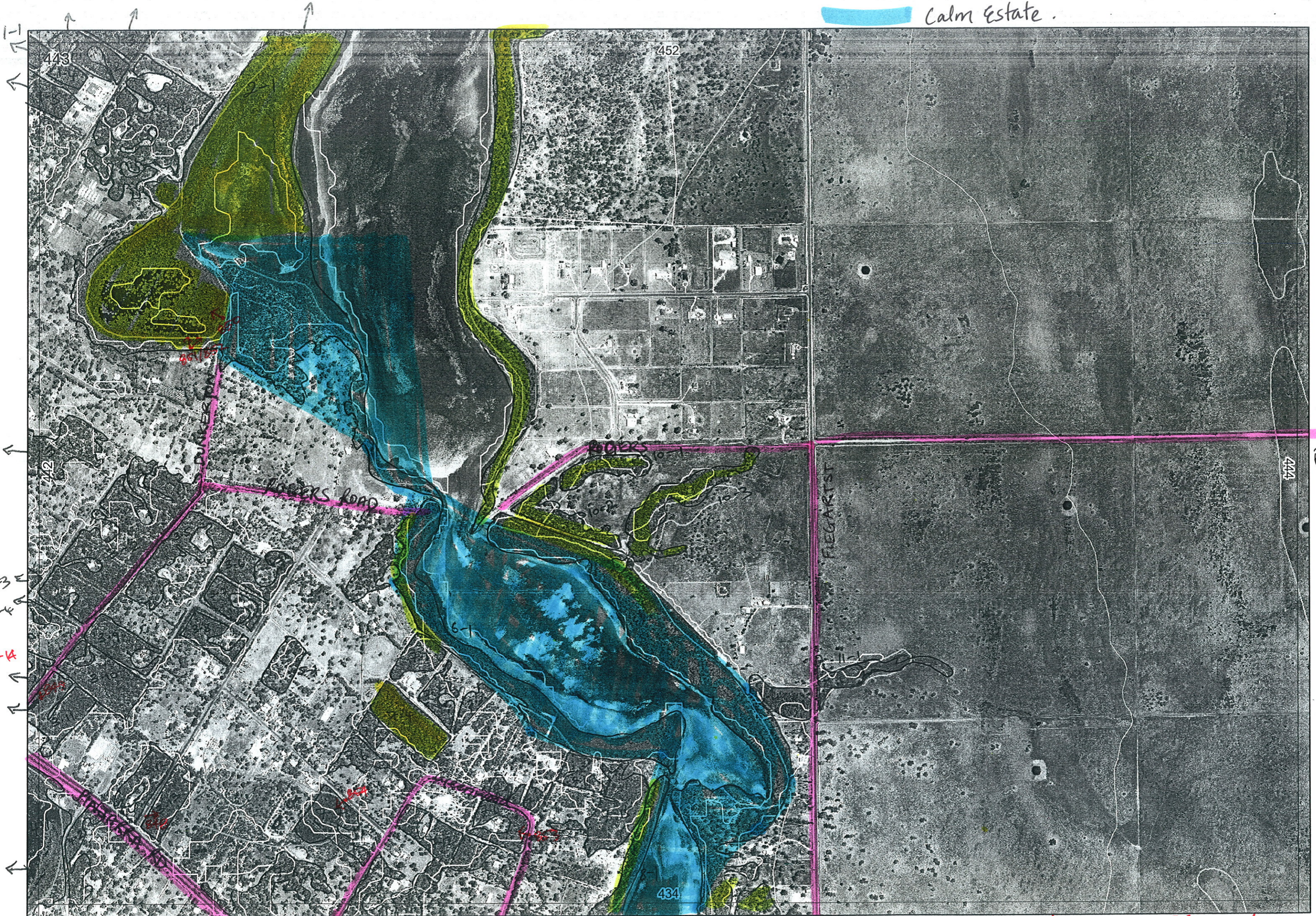
R E M	RE M2	XM AP	LIN TYPE	L I N E A R	M L U	U N I T S	U P L A N D ?	W E T L A N D ?	V I S I T ?	DETAIL/ Area Name	VEG CON	Field date 200_	OBS From	YNOTASS	D E T V I S I O N R E Q D	COMMENTS	VEG STRUC/ DENS	FCT	DOMINANTS		
																			1	2	3
10	2				W	1							Aeria Int ?		✓		W				
10	3	✓	R/shore	✓	W/B	3	✓	✓		Conservation Estate	2		Aeria Int ?		✓		W				
10	4	✓			B	1	✓						Aer Int ?				W				
12	1	✓			B	1							Dist			+ Kungla, Banili, Nuyflo	W		Allgra	Evccal	Banatt

Summary/General Comments
Delete 11-1 from Database

Entered 27/1/06

REMNANT-PART NO	NON-LINEAR	LINEAR PLUS	CROSSES MAP SHEET BOUNDARY (Y/N)	FIELD VISIT REQ YES/NO	FIELD DATE	LOCAT. OBSERV.	WETLAND VEG (Y/N)	SIM REM	DETAIL (Y/N)	VEGETATION CONDITION	VEGETATION/PREVIOUS INFO
1-1			Y	Y	14/12	edge				Same as 1-3	
1-2			Y	Y	14/12	edge	N			VA-EX	Banmen Banatt Eucmor Allfra Hibbhyg Dasbro Xyloc Acapul
1-3			Y	Y	14/12	edge				7G	Banatt Nuyflo Banmen
1-4			Y	Y	14/12	distance				Same as 1-4	
1-5			Y	Y	14/12	edge	N		N		Banmen Eucmor Xyloc Allfra Kongla
1-6			Y	Y	14/12	edge	Y		Y	EX	Mel'sol over sedges / shrub mosaic / Niujon Jacfer etc.
2-1	Y	River	Y	Y	14/12	edge	Y			7G	Xyloc Eucmor Kongla Jac?ste Banmen
3-1			Y	Y	14/12	distance			N		Allfra Eucmor Kongla Banmen Banili Acapul Banatt Ade
3-2			Y	Y	14/12	edge				CD	garden
3-3			Y	Y	14/12	edge				G	Bangra Kongla Eucmor Eucal
3-4			Y	Y	14/12	edge				G	Eucmor Banatt Allfra Bangra Banili
3-5			Y	Y	14/12	edge				G	Allfra Xyloc Banatt Kongla Banmen Eucmor Hibbhyg
3-6			Y	Y	14/12	edge				G-VG	Allfra Eucmor Kongla Banmen Banili Acapul
3-7			Y	Y	14/12	edge			222222	G	Allfra Eucmor Kongla Banmen Banili Acapul
3-8			Y	Y	14/12	edge	Y			D-G	Kongla Allfra Macrci Banmen
3-9			Y	Y	14/12	edge				G	Allfra Kongla Banatt Adenanthos
3-10			Y	Y	14/12	edge				7G	Eucmor Kongla Banili Banatt
3-11			Y	Y	14/12	edge	Y			VA-?EX	Meltha Eucrod Uellat
3-12			Y	Y	14/12	edge	N			G-VG	Banatt Bangra Xyloc Eucrod Eucmor Banili Kongla Ade
3-13			Y	Y	14/12	edge	Y			7G	Eucrod Eucal Bangra Jacfer Jacste Kongla Veldt's
4-1			Y	Y	14/12	edge/distance			2		
4-2			Y	Y	14/12	edge/distance				7G	Allfra Banatt Eucmor
5-1	Y	River	Y	Y	14/12	edge/distance					
6-1	Y	River	Y	Y	14/12	edge/distance					
7-1			Y	Y	14/12	edge	Y			EX	Eucal Banatt Kongla Melpre
7-2			Y	Y	14/12	edge					
7-3			Y	Y	14/12	edge	N			7G	Allfra Bangra Eucmor Kongla
7-4			Y	Y	14/12	edge	Y			EX	Eucrod Meltha Banlitt Jacste
7-5			Y	Y	14/12	edge					
7-6			Y	Y	14/12	edge	N			7G	Bangra Eucal Eucmor Xyloc
7-7			Y	Y	14/12	edge	Y			EX	Eucal Banmen Banatt Xyloc
7-8			Y	Y	14/12	edge					
7-9			Y	Y	14/12	edge				7G	Eucal Banatt Banmen Stilat
7-10			Y	Y	14/12	edge				7G	Bangra Eucal Eucmor Xyloc
7-11			Y	Y	14/12	edge				7G	Eucal Banmen Banatt Xyloc
7-12			Y	Y	14/12	edge				7G has been burnt	Eucal Banatt Banmen Stilat
7-13			Y	Y	14/12	edge					
7-14			Y	Y	14/12	edge					
7-15			Y	Y	14/12	edge					
8-1	Y	River	Y	Y	14/12	edge					
9-1	Y	River	Y	Y	14/12	edge					
10-1			Y	Y	14/12	edge					
10-2			Y	Y	14/12	edge					
10-3	Y	River	Y	Y	14/12	edge					
10-4			Y	Y	14/12	edge					
NOTES 11-1	Y	D/L	Y	Y	14/12	edge	Y			CD grazed	
3-14			Y	Y	14/12	edge	Y		I	G-VG	Meltha, Eucrod, Kongla
12-1			Y	N	14/12	distance	N		N	≥D	Allfra Kongla Banatt Banili Nuyflo Eucal.

Calm Estate.



To
→
Paterson
Rd

Illegal filling Lot 45 Greenwood cur Hastings