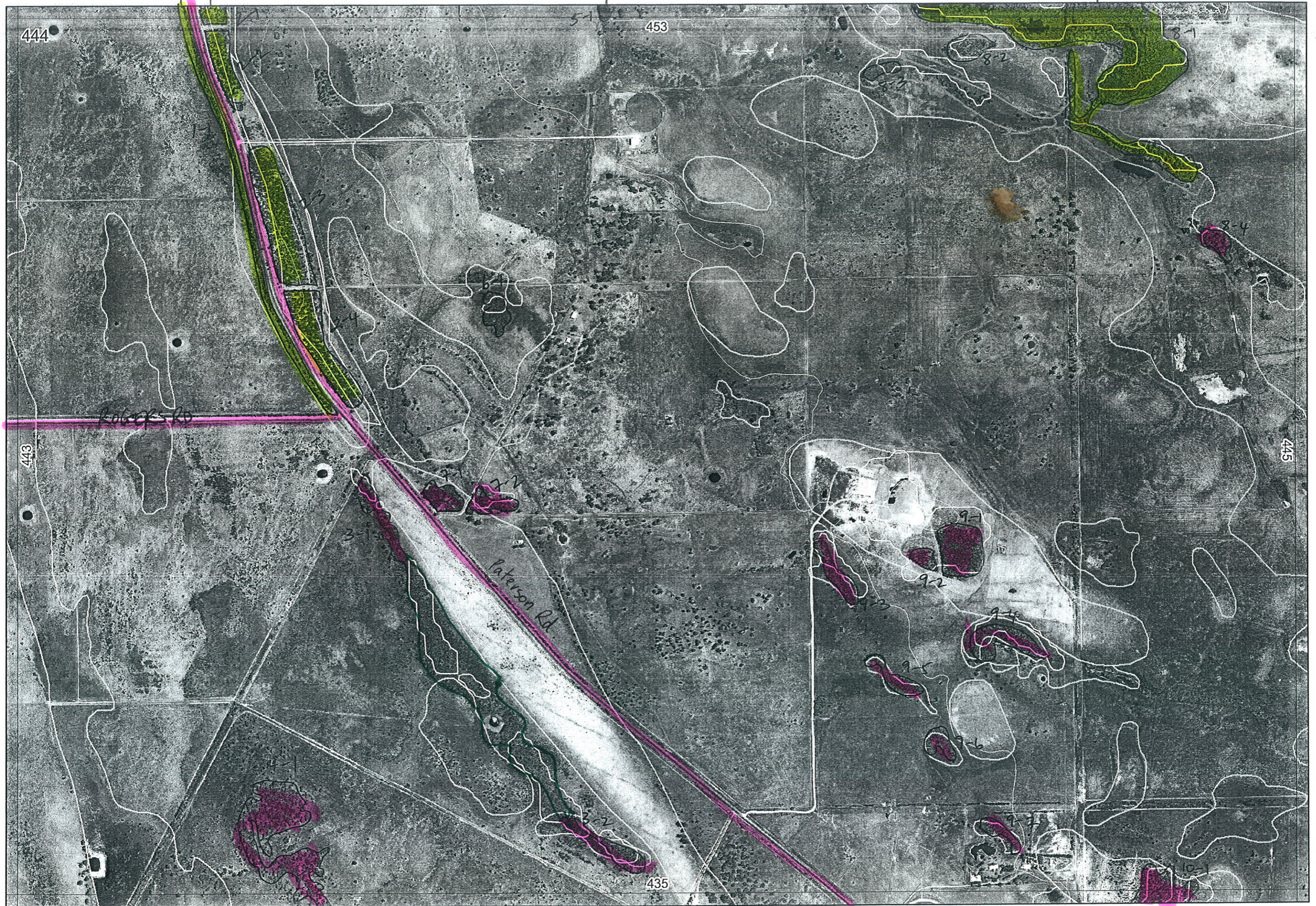




444



No NAME



± 200m

To Pingarra

Bassenden Dune

entered 19/12/05
 re-entered 23/1/06

REMNANT-PART NO	NON-LINEAR	LINEAR PLUS	CROSSES MAP SHEET BOUNDARY (Y/N)	FIELD VISIT REQ YES/NO	FIELD DATE	LOCAT. OBSERV.	WETLAND VEG (Y/N)		SIM REM	DETAIL (Y/N)	VEGETATION CONDITION	VEGETATION/PREVIOUS INFO
							W	UP				
1-1	Y	Road	Y	Y		edge	Y	Y	2	N	degraded - thin map and look at map 453	Aden cygnus, Melaleuca, Kunzea, Eucalyptus, Leptocarpus, All. frax, Banksia littoralis, X. piperita, Nuytt flora
2-1	Y	Road	Y	Y		edge				N	degraded	as below
2-2	Y	Road	Y	Y		edge		✓	1	N	degraded (no understorey)	as below
2-3	Y	Road	Y	Y		edge		✓	1	N	degraded "	Forest
2-4	Y	Road	Y	Y		edge		✓	1	N	degraded	Kun glab, B. littoralis, B. atten, B. menziesii, All. frax, Nuytt flora
3-1	Y	Depression				dist	✓		1	Y-?	degraded	Euc rudis, Melaleuca, over Juncus sedges
3-2	Y	Depression				dist					(add to 3.1)	Nuytt flora, Kun glab, Mel rhaph
4-1											can't see from road	
5-1											see map 453 (not seen)	
6-1						- aerial wetland					can't see from rd	
7-1						edge		✓	1	N	degraded	scrub - Kun glab, Nuytt flora
7-2						dist		✓	1	N	degraded	as above
8-1		- aerial 2 comm wetland				- aerial melaleuca w		Y				
8-2		- aerial upland				Kunzea Banksia w						
8-3		- aerial wetland				Melaleuca w						
8-4		- aerial wetland				Melaleuca w						
9-1						- aerial upland						
9-2						Eucalyptus Banksia						
9-3						- aerial upland						
9-4						Eucalyptus Banksia						
9-5						- aerial areas						
9-6						wetlands						
9-7						F Melaleuca						
10-1			Y			- aerial upland						
						Banksia littoralis, Banksia attenuata, All. frax						

NOTES