



451 ✓

not all of the Tuart is marked on the original.

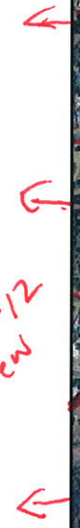
Ag



Add:
 Remnant
 451/1-12
 ←

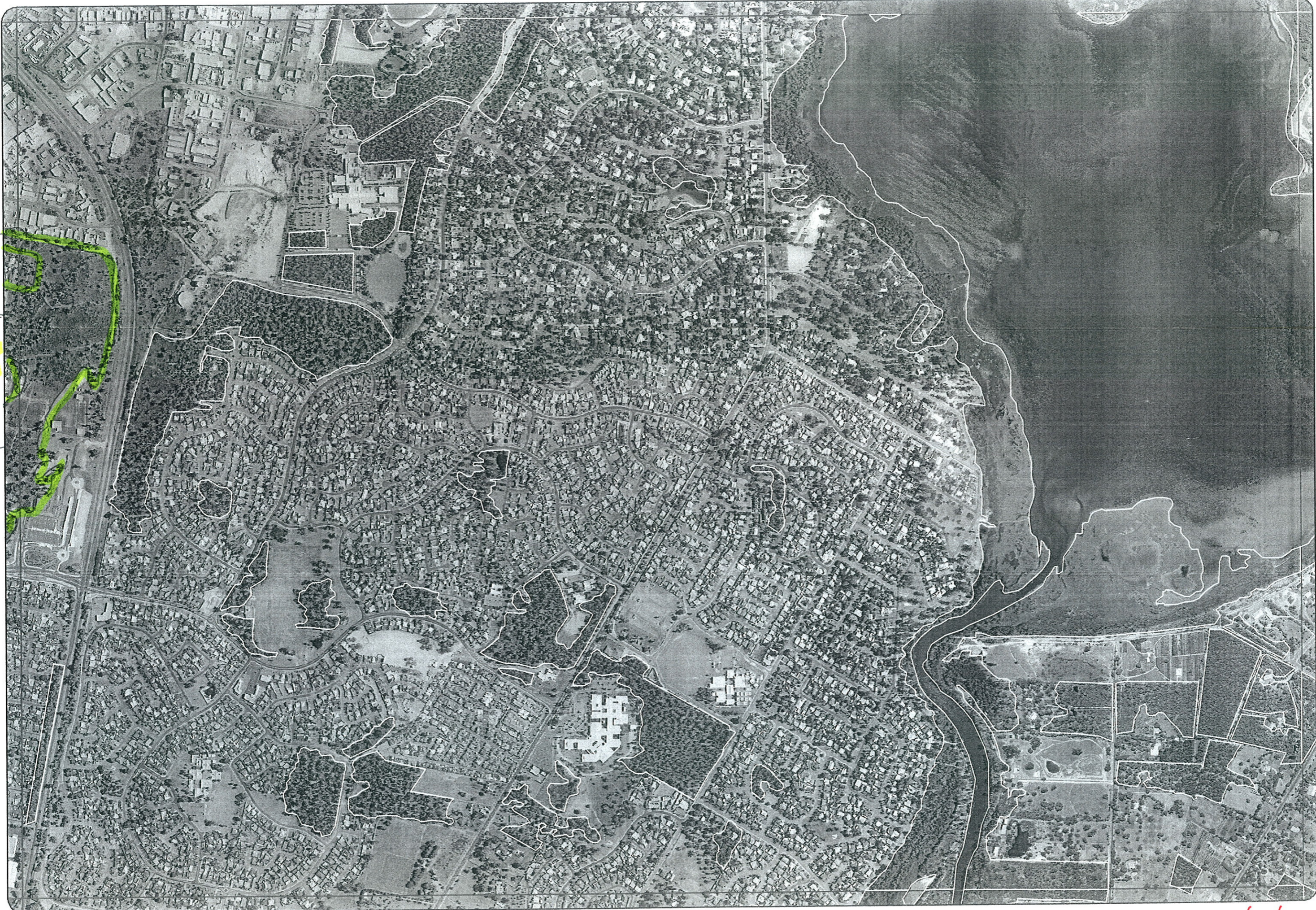
Note: yellow linework is
 existing ERAP remnants.

1-12
New



451 ✓

set all of the Tract & marked on the map



1-12
new

Sent 26/10/06
by Bec - snail-mail

Map Sheet 451
 Bronwen
 Brady
 Andrew

Bamb

REC FIELD

DoE 8/2005

RCP

Entered 24/1/06 PB

REMNANT-PART NO	NON-LINEAR	LINEAR PLUS	CROSSED MAP SHEET BOUNDARY (Y/N)	FIELD VISIT REQ YES/NO	FIELD DATE	LOCAT. OBSERV. <i>Edge except where where stated</i>	WETLAND VEG (Y/N)	SIM REM	DETAIL (Y/N)	VEGETATION CONDITION	VEGETATION/PREVIOUS INFO
1-1			Y			Dist				CD	eucgom
1-2			Y			Dist				CD	eucgom
1-3	Y	Road	Y	Y						G-D	Eucmar, banatt, allfra, xylocc, acapul, horcom.
1-4				Y						G-VG	allfra, banatt, eucmar, acapul, acasal
1-5										G-D	Eucmar, bangra, allfra, banatt, acapul
1-6										G	allfra, eucmar, banatt, acapul, hibhyp.
1-7				Y						G	(Recent Fire) See 1-9.
1-8	Y	Edge		Y						G	Eucgom, banatt, Eucmar, bangra, acapul (old trants)
1-9				Y						VG	eucgom, bangra, banatt, allfra, eucmar, acapul
1-10										ED-D	bangra, Eucmar, eucgom, banatt, jacfur, acapul
2-1	Y	?	Y	Y						G	see 1-3
3-1				Y						CD-D	eucgom, eucal, banatt, jacfur
3-2				Y						CD-D	eucgom, banatt, bangra, eucmar
3-3				Y						CD-D	eucgom, acasal, bangra
4-1				Y						CD	eucgom, parkland
4-2										CD-D	eucgom, leplav, acaros
4-3				Y						D	banatt, bangra, banili, eucgom, allfra, acasal, eucmar
4-4										D-CD	see 4-3
5-1				Y						G-VG	eucgom, allfra, banatt, bangra, eucmar, acapul
5-2				Y						G-D	see 5-1
5-3				Y						G-VG	see 5-1
6-1				Y			Y			CD-D	eucgom, bangra, acasal, banatt, POS Grassed
7-1										D-CD	POS, eucgom, banatt, jacfur, acasal, acapul, eucmar
8-1				Y						G	Eucmar, banatt, allfra, bangra, macrei, jacste, banili, bangra, eucgom
8-2										CD-D	acapul, acasal, jacfur, banatt, eucmar, macrei,
8-3										CD	eucgom, banatt, banili, exotic plantings
8-4										D	banili, banatt, xylocc, eucmar, jacste, banmen
8-5										CD	Exotic plantings amongst kungla + banatt, banili
9-1	Y	River	Y							EX	Goegrup NR? eucal, allfra, eucmar, jacste, melha
10-1	Y	River	Y				Y			EX	Goegrup NR Kungla, Eucrud, melha, eucgom, reg cil
11-1	Y	River	Y								Goegrup NR See Map Sheet 459.
12-1	Y	River	Y								Goegrup NR See Map Sheet 452 + 459
13-1										G-D	see 13-2 + allfra
13-2			Y							D	Kungla, banatt, banili, jacfur, acapul
13-3				Y						G	banmen, eucgom, kungla, jacfur, banatt
13-4										G	banmen, eucgom, kungla, jacfur, banatt
13-5			Y							G	kungla, phcil, eucmar, allfra, macrei, eucgom
13-6			Y	Y						VG	Hakvor melha, allfra, eucmar, kungla, acasal, jacfur, eucgom, leplon
13-7				Y						VG-EX	eucal, melha, acasal, eucrud, leplon, melinc
13-8				Y						VG	eucgom, jacfur, melha, leplon, eucrud, acasal
13-9										D-CD	eucmar, agiflex? eucal, bangra
13-10										G	eucrud, distant
13-11			Y							-	Not seen see map sheet 452
1-11										CD	eucgom, agiflex (lobes planted)
1-12			Y			Edge				D-G	eucgom, Acacoc, rhabac, Appears transitional Photos. Spearwood/Quindalup

NEW 13/06 NOTES

Tuart occurrence needs updating from this data sheet.

120/40