

452

460 4-5



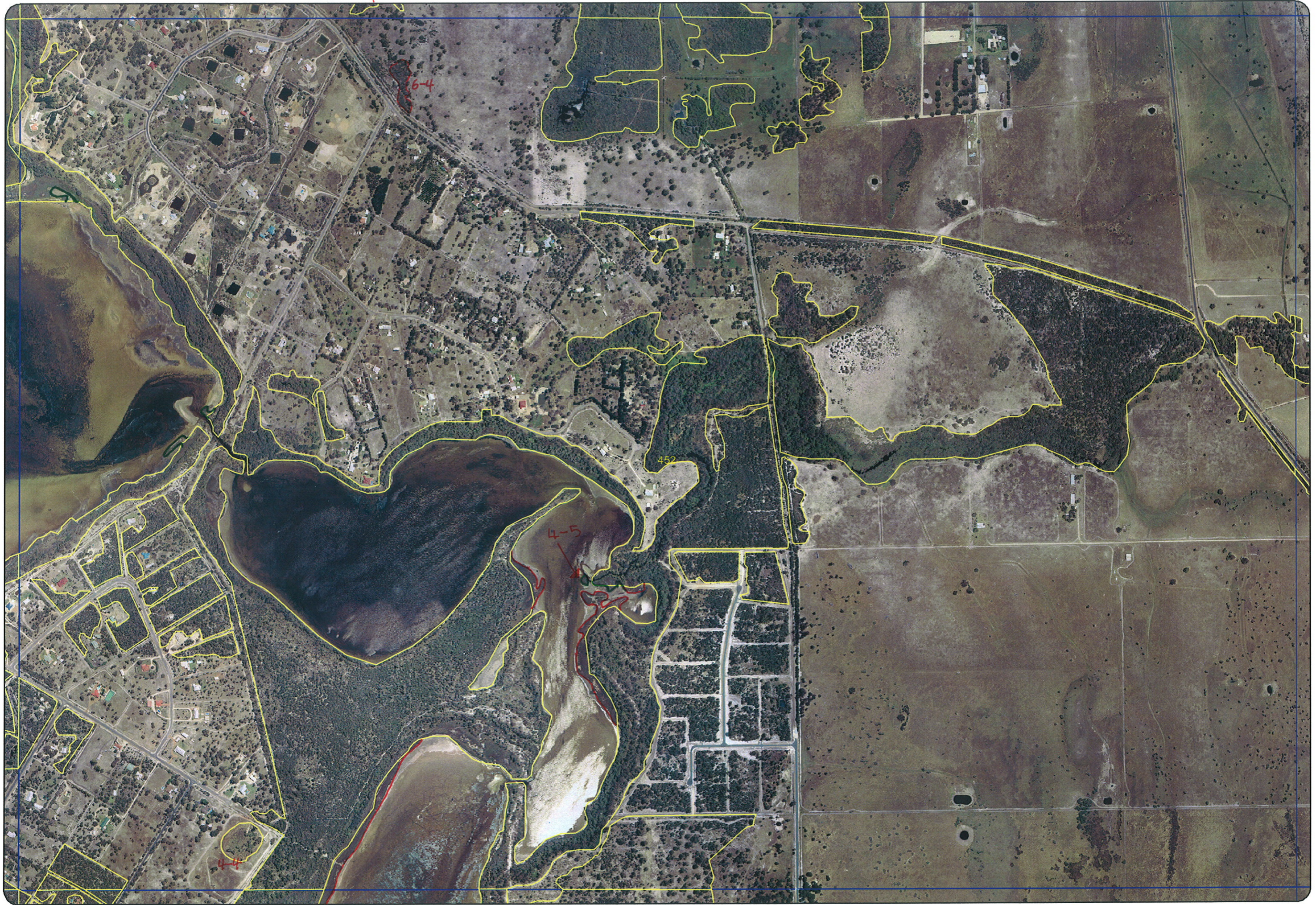
6-4

452

4-5

4-4

Brady please add remnant N° 4-5



Ag



Juniper
 Mul. poplar
 Mul. prunus

EEEEA

Bossenden dunes

entered 19/12/05
 re-entered 23/1/06

REMNANT-PART NO	NON-LINEAR	LINEAR PLUS	CROSSES MAP SHEET BOUNDARY (Y/N)	FIELD VISIT REQ YES/NO	FIELD DATE	LOCAT. OBSERV.	WETLAND VEG (Y/N)	SIM REM	DETAIL (Y/N)	VEGETATION CONDITION	VEGETATION/PREVIOUS INFO
1-1	Y	River	Y			edge			Y	Very good to Excellent assumed mac as 1-1	Goegrup NR Mel pre, Nuyflo, Everud, casobe, melha, hakavar
1-2	Y	River	Y			edge				degraded to good	Goegrup NR
2-1						edge				good	Jarrah, Kung glab, Allo frax, B. illiij, Bank atten, scattered understorey, Bank menz
2-2						edge				good	Bank menz, Bank atten, Bank illiij, Kung glab, All frax, macroZ, understorey spp.
2-3						edge				good	as above
2-4						edge				good	as above + Woody pear
2-5						edge				good	as in 2-1 bigger healthier more intact understorey Nuyflori, Bank menz
2-6						edge				good	as above to Bank menz
2-7						edge				very good	as above + Jack storn + Bank menz phloem oil Leuco spp
2-8						edge				very good	as above + Mel thymoides, Army bronn
2-9						dist				good hard to see rem veg at bank	as above
2-10						dist				degraded to good hard to see	as above
2-11										see map 451	
2-12						edge				degraded but evenly partly cleared	Jarrah, B. att, Allo frax, Bank grass, scattered understorey
2-13						edge				excellent	Jarrah, B. menziesii, B. atten, Woody pear, MacroZ, Army bronn
2-14										> SEE map 443	
2-15										degraded (grasses reduced, cleared)	Ever. rudis, Mel thym, Jack storn, Lep long
3-1						edge				good (small area) "	Mel thym, Bank litt, Lep long, Ever rudis
3-2						edge				G-VG. xanpre	Goegrup NR (part), All frax, Kungla, Nuyflo, Banili, banatt, melha, macroZ
4-1	Y	River	Y			edge				excellent	Small part NR (see notebook) (several comma)
4-2	Y	River	Y	Y		edge	Y		Y		Goegrup NR (cant see)
4-3	Y	River	Y			edge	Y				eucmar, kungla, nuyflo
5-1						edge					Melpre, eucal, xanpre, kungla
5-2						edge					eucmar,
CLEARED											
6-1			Y	Y		dist	Y			Faraway but looks G-VG	Everud, melvha, mel pre (birds above) raptor
6-2			Y	Y			Y			see map 460 looks to be same cond etc.	Not seen
6-3			Y	Y							Not seen
7-1			Y								Not seen
7-2											Not seen
7-3											Not seen
PTO											

NOTES

airial W - Everud, Melpre, Melha
 airial W - melvha, Melpre, Melhar

2

D/L = Drainage Line

DoE 8/2005

SCP NATURAL AREA MAPPING SHEET

MAP SHEET 452

REC PRE-FIELD Bark

REC FIELD AW

REMNANT-PART NO	NON-LINEAR	LINEAR PLUS	CROSSES MAP SHEET BOUNDARY (Y/N)	FIELD VISIT REQ YES/NO	FIELD DATE	LOCAT. OBSERV.	WETLAND VEG (Y/N)	SIM REM	DETAIL (Y/N)	VEGETATION CONDITION	VEGETATION/PREVIOUS INFO
8-1	Y	Road		Y		edge				D	Eucal, kungla, eucmar, jacfur
8-2	Y	Road		Y		edge				D	Kungla, melpre
8-3	Y	Road		Y		edge				good	Kunglah, Euc. marg, Aden cygnar, Bank ratt, Phlebo cil, Xylacc, Hibhyperic
9-1				Y		edge	Y			D-G	Everud, malcha, eucal, brachen fern
9-2	Y	D/L		Y		edge				EX-VG	Brachen fern, Everud, jacfur, melpre kungla (several comms)
9-3	Y	D/L	Y	Y		edge				degraded (overstory intact)	Mel. phrag, Kunglah, Euc. rud, Euc. calapt over open sedge
9-4	Y	Road				edge				D-CD	Melpre, everud
10-1	Y	Road	Y							near map 453	
4-4						dist	Y			5	malcha, Melpre, Jumpal
6-4											- aerial W - Kungla-?
11-1											- aerial W - Banga
4-5											- aerial W - mu sedge/shrub

NOTES