

453



Ag



453

461

454

444

1-1

1-2

6-3

6-13

1-3

1-4

2-2

2-1

2-3

6-12

6-14

6-15

10-1

3-2

3-3

3-4

6-11

452

5-1

7-2

10-2

10-3

4-2

5-2

11-3

5-3

8-1

8-3

Mid tardifus.

8-4

8-6

8-7

8-5

8-8

8-9

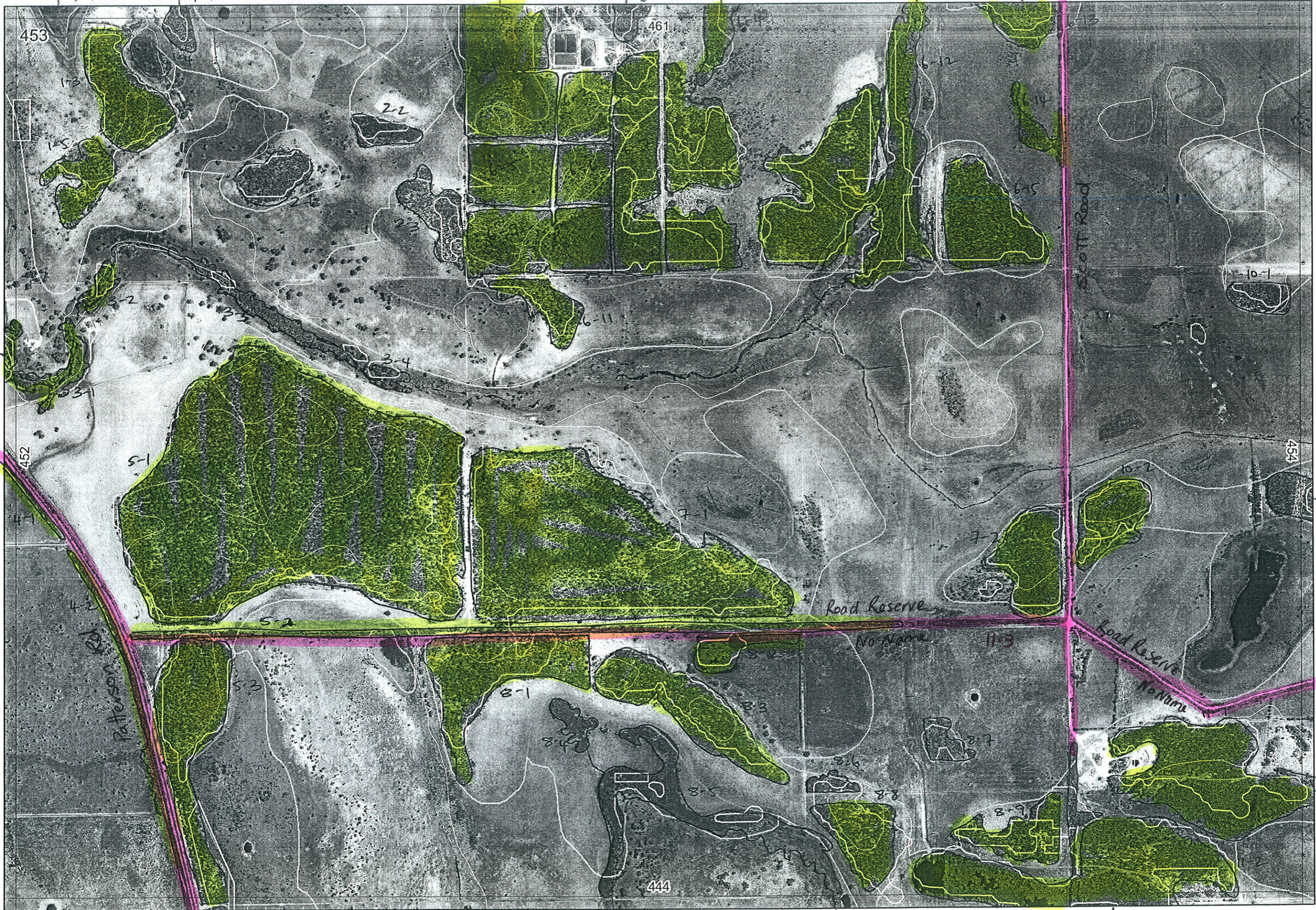
1-2

5-4

EEEA

Lakes Rd.

TO LAKES RD.



Patterson Rd

Road Reserve

No Name

Road Reserve
No Name

Scott Road

453

461

454

444

1-1

1-2

6-3

1-3

1-5

2-2

2-3

3-2

3-3

3-4

6-11

6-12

11-4

6-15

10-1

5-1

5-2

5-3

8-1

8-4

8-5

8-2

8-6

8-8

8-9

7-2

10-2

10-3

11-3

5-4

7

←

←

←

←

↓

↓

↓

↑

↑

↑

↑

↓

↓

→

→

→

→

→

→

→

→

→

→

→

→

→

→

→

→

→

→

→

→

→

→

→

→

→

→

→

→

→

→

→

→

→

→

→

→

→

→

→

→

→

→

→

→

→

→

→

→

→

→

→

→

→

→

→

→

→

→

→

→

→

→

→

→

→

→

→

→

→

→

→

→

→

→

→

→

→

→

→

→

→

→

→

→

→

→

→

→

→

→

→

→

→

→

→

→

→

→

→

→

→

→

→

→

→

→

→

→

→

→

→

→

→

→

→

→

→

→

→

→

→

→

→

→

→

→

→

→

→

→

→

→

→

→

→

→

→

→

→

→

→

→

→

→

→

→

→

→

→

→

→

→

→

→

→

→

→

→

→

→

→

→

→

→

→

→

→

→

→

→

→

→

→

→

→

→

→

→

→

→

→

→

→

→

→

→

→

→

→

→

→

→

→

→

→

→

→

→

→

→

→

→

→

→

→

→

→

→

→

→

→

→

→

→

→

→

→

→

→

→

→

→

→

→

→

→

→

→

→

→

→

→

→

→

→

→

→

→

→

→

→

→

→

→

→

→

→

→

→

→

→

→

→

→

→

→

→

→

→

→

→

→

→

→

→

→

→

→

→

→

→

→

→

→

→

→

→

→

→

→

→

→

→

→

→

→

Darb

REC FIELD Andron Wells

DoE 8/2005

1

D/L = Drainage Line

entered
11/12/05
re-visited 23/1/06

REMNANT-PART NO	NON-LINEAR	LINEAR PLUS	CROSSES MAP SHEET BOUNDARY (Y/N)	FIELD VISIT REQ YES/NO	FIELD DATE	LOCAT. OBSERV.	WETLAND VEG (Y/N)	SIM REM	DETAIL (Y/N)	VEGETATION CONDITION	VEGETATION/PREVIOUS INFO
1-1			Y				Y			see map 461 see map 461	
1-2			Y								Not see-able
1-3	-aerial U-J/Bansp			Y							
1-4	-aerial W-Mel/sedge										
1-5	-aerial U-J/Bansp			Y							
2-1	-aerial U-J/Bansp										
2-2	-aerial U-J/Bansp										
2-3	-aerial U-J/Bansp										
3-1	Y	D/L	Y							see map 452	
3-2	Y	D/L		Y							
3-3	Y	D/L		Y						not seen from rd	
3-4	Y	D/L									
4-1	Y	Road	Y	Y		edge			N	degraded	Kunz glab, Mel preia, Isolepis nod
4-2	Y	Road	Y	Y		edge			N	good to degraded (narrow)	Mel preia, Kunz glab, Euc mang, Lep long, Thyssa open
5-1	Y	(link to 1/3)	Y	Y		dist			Y	very good (grazed)	Jarrah, All Gas, Wood, pear, Kunz glab, Banksia, Mel preia, Mel preia
5-2	Y	Road	Y	Y		edge			Y	very good	as above + daisy, brom, Phleba cil, Xanth spp
5-3	Y	Road	Y	Y		edge			Y	very good	as above + Hib hypocis + Conostegia spp, Nuyt florib
5-4	Y		Y			edge				see map 444 see map 461	
6-1	-aerial U-Bansp, W-Mel, W-Perell?		Y	Y					Y		
6-2	-aerial U-Bansp, W-Perell?		Y	Y					Y		
6-3	-aerial U-Bansp, -?		Y	Y					Y		
6-4	-aerial W-Mel		Y	Y					Y		
6-5	-aerial W-Perell?, U-shrubland-?		Y	Y					Y		
6-6	-aerial U-Bansp, U-shrubland-?		Y	Y					Y		
6-7	-aerial U-Bansp, W-Mel, Perell-?		Y	Y					Y		
6-8	-aerial U-Bansp, W-Mel		Y	Y					Y		
6-9	-aerial U-Bansp, W-Mel, Perell-?		Y	Y					Y		
6-10	-aerial W-Mel, W-Mel, Perell-?		Y	Y					Y		
6-11	-aerial U-Bansp		Y	Y							
6-12	Y	D/L	Y	Y						see map 461 see map 461	
6-13			Y	Y		dist			N	degraded (diff to see)	Kunz glab, Mel teretifolia ...
6-14			Y	Y		dist			N	good	Kunz glab, Mel preia, Ast fascic
6-15			Y	Y		dist			N	good	Kunz glab, Mel preia, Junca pallida, Ast fascic
7-1	partly visible in SE cor		Y	Y		dist			Y	good	All Gas, Kunz glab, Nuyt flor, Banksia, Xanth spp, Phleba cil, Mel preia
7-2			Y	Y		edge			N	degraded to good	Kunz glab, Banksia, All Gas, Nuyt flor, Banksia, Acac pulch, Mel preia
8-1	not see-able aerial - U-Bansp		Y	Y					Y	good	Mel preia, Kunz glab, Ast fascic, Mel teret
8-2	not see-able aerial - U-Bansp		Y	Y		edge	Y		Y		
8-3	not see-able aerial - U-Bansp		Y	Y					Y		
8-4	not see-able aerial W-Mel, sedge-?		Y	Y						not see-able not seen	
8-5	Y	D/L	Y	Y							
8-6	not see-able aerial U-Kunz -??		Y	Y							
8-7	not see-able aerial W-Mel		Y	Y							
8-8	not see-able aerial U-Bansp -?		Y	Y							
8-9	not see-able aerial U-Bansp		Y	Y							
PTO											
NOTES											

degraded multi-flowering
understory present but not visible
from Alder open Jarrah

REMNANT-PART NO	NON-LINEAR	LINEAR PLUS	CROSSES MAP SHEET BOUNDARY (Y/N)	FIELD VISIT REQ YES/NO	FIELD DATE	LOCAT. OBSERV.	WETLAND VEG (Y/N)	SIM REM	DETAIL (Y/N)	VEGETATION CONDITION	VEGETATION/PREVIOUS INFO
10-1	not see-able			Y		edge			N	?	Kun glab, Mel preissi
10-2				Y		edge			N	degraded to good	same as 702 + Bank mense
10-3	not see-able		Y	Y		10-2			N		
11-1			Y	Y		dist	Y		Y	very good	U- All Grass, Ban illi, B-often Kun glab, Dasy brom, W-Melkp F, W-Melkp, sedge
11-2	not see-able		Y	Y		11-1	Y		Y		
11-3	becomes 5-2		Y	Y		edge	N		Y	very good to excel	All Grass, Nuy fler, Jarak, Mel preissi, Xanth preissi, Kun glab, Jack furcell, Dasy brom, Phobos cili, Raf occid, Mel soteri (pink fl), Mel thymoid, Rep ciliata, Eriocaulon pauciflor, Puncal ellipt, Aden meineri, Hypocistis angust, Aden elov, Stylid junce, Schoenus foliatus, Ast-favie, Eriocaulon virg-?, Juncus pallid, Lep long
NOTES											