


460

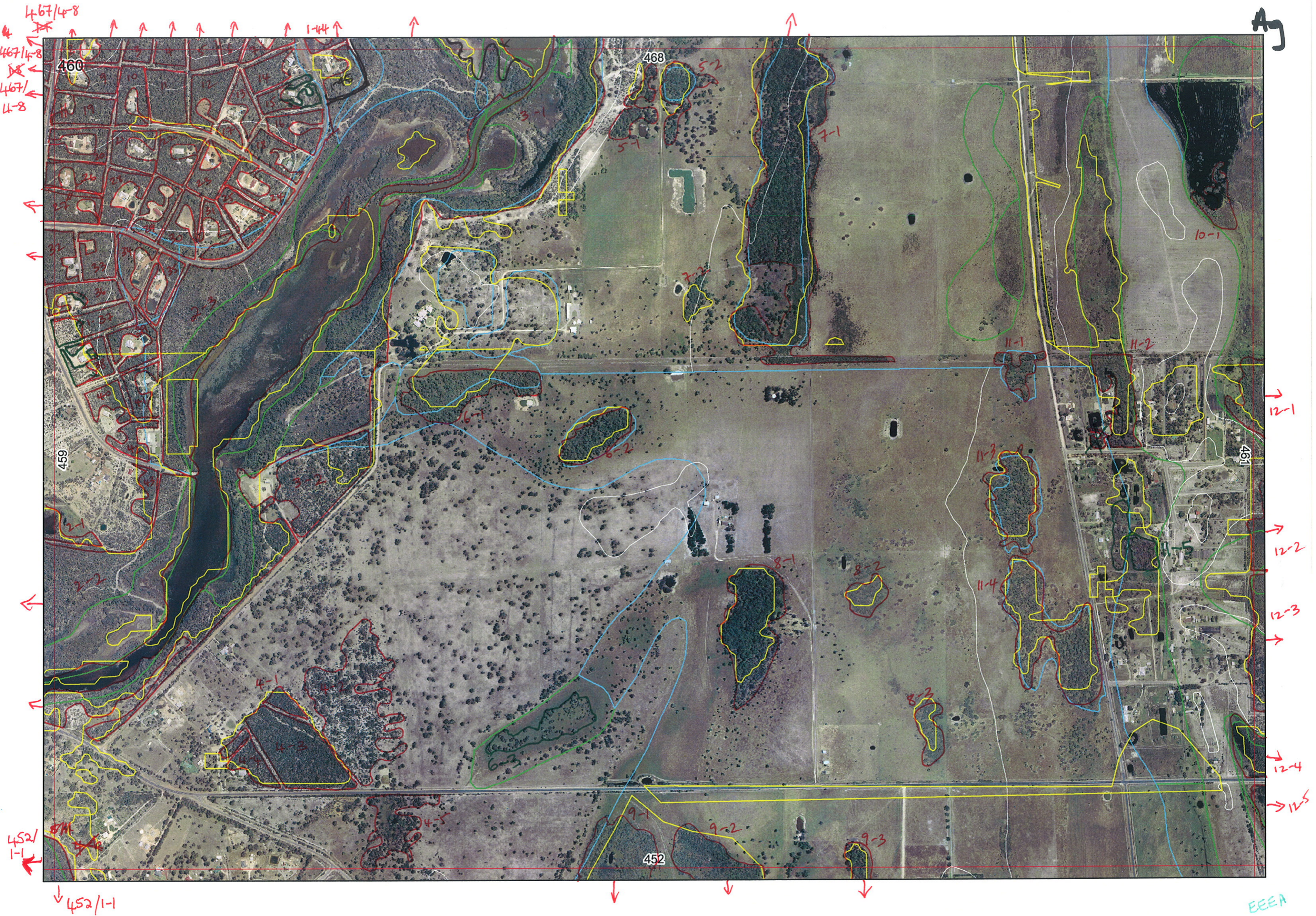
key  = not remnant veg.



\*

\*  
join  
together  
460/2-1  
→ 460/2-2  
459/  
6-2





EEEE



Gull Rd

460

468

459

452

Fauler Rd

Goegrup NR.

I  
J  
K  
L  
M  
N  
O  
P  
Q  
R  
S  
T  
U  
V  
W  
X  
Y  
Z

12-1  
12-2  
12-3  
12-4  
12-5

2-2

1-44

↑

↓

①

Entered 24/1/06 B.  
re-entered 25/1/06

REMNANT-PART NO	NON-LINEAR	LINEAR PLUS	CROSSES MAP SHEET BOUNDARY (Y/N)	FIELD VISIT REQ YES/NO	FIELD DATE	LOCAT. OBSERV.	WETLAND VEG (Y/N)	SIM REM	DETAIL (Y/N)	VEGETATION CONDITION	VEGETATION/PREVIOUS INFO
1-1 = 367/4-8			Y								= 468 3-14 } Bonatt, Bangra, Banmen, Kunz glab. = 468 3-15 } Alfira, Eucemar, Eucal, Macrie = 468 3-16 } = 468 3-17 } = 468 3-18 } E. mang, Allo fras, Kunz glab, B. atten, (= 468 3-19)
1-2			Y								
1-3			Y								
1-4			Y								
1-5			Y								
1-6			Y								
1-7			Y	Y	5/2	edge				VG-EX	
1-8 = 367/4-8			Y								E. calo, Allo fras, B. atten, E. mang, B. grand, Kunz glab = 23 = 23 = 23 = 23 Tuart, B. atten, B. grand, E. mang, Allo fras = 15 + E. mang E. vudis, Kunz glab, Vim junc, E. calo + E. mang = 34 + Tuart B. atten, B. grand, Kunz glab. Tuart, B. atten, B. grand, Allo fras, Kunz glab = 9 = 9 = 23 = 23 B. atten, B. grand, Kunz glab, E. gamp, E. mang, Allo fras = 25 + Tuart = 9 G, Jarrah w dieback symptoms? = 27 Janak, B. atten, Allo fra, Kunz glab, B. grand = 27 = 27 = 27 but recently burnt, still burning! [Lot 34] — not burning on 30/11/05 = 27 = 27 = 27 + B. ilici Mel preis, Vim junc, Kunz glab = 27 = 27 but cleared ~ 5yrs ago + regrowth now to 2.5m = 37 = 37 Kunz glab, Jack B. atten B. wenz, Aden cyg, B. atten, Kunz glab. low Tuart, Kunz glab, E. calo, Billie, B. grand
1-9			Y	Y	5/12	edge				EX	
1-10				Y	5/12	edge				EX	
1-11				"	5/12	"				EX	
1-12				"	5/12	"				EX	
1-13				Y	5/12	edge				EX	
1-14				Y	5/12	edge				G-VG	
1-15				Y	5/12	edge				G-VG	
1-16				Y	5/12	edge				VG	
1-17				Y	5/12	edge				VG	
1-18				Y	5/12	edge				VG-EX	
1-19				"	"	"				VG	
1-20				"	"	"				VG	
1-21				"	"	"				VG	
1-22				"	"	"				EX	
1-23				Y	5/12	edge				EX	
1-24				Y	5/12	edge				VG	
1-26				"	"	"				VG	
1-25				Y	5/12	edge				G	
1-27			Y	Y	5/12/05	edge				EX	
1-28					"	"				EX	
1-29					"	"				VG	
1-30				Y	"	"				G	
1-31					"	"				VG	
32			Y	Y	5/12	edge				EX	
33					"	"				EX	
34				Y	"	"				EX	
35					"	"	Y			EX	
36				Y	"	"				EX	
37				"	"	"				VG	
38				"	"	"				VG	
39	-aerial U-J/bonatt/alfira										
40				Y	5/12	edge				VG	
41	-aerial U-J/bonatt/alfira										
42				Y	5/12	edge				G	
43				"	"	"				EX	
1-44			Y	Y	5/12	edge				G-VG	

NOTES  
1-1 to 1-44 Special Rural Bushland Blocks Freehold.

2

2

SRNR = Serp Riv Nat Res

SCP NATURAL AREA MAPPING SHEET  
MAP SHEET 460 REC PRE-FIELD

DoE 8/2005

REC FIELD Beck

REMNANT-PART NO	NON-LINEAR	LINEAR PLUS	CROSSES MAP SHEET BOUNDARY (Y/N)	FIELD VISIT REQ YES/NO	FIELD DATE	LOCAT. OBSERV.	WETLAND VEG (Y/N)	SIM REM	DETAIL (Y/N)	VEGETATION CONDITION	VEGETATION/PREVIOUS INFO
2-1	-aerial	U-Bonatt/J, w-Melosp.	Y	Y			Y				Part Goegrup NR
2-2	Y	River	Y	Y			Y				Part Goegrup NR + Situat, Kunz glab, Allo Fras, Batten, E. marg, E. calo
3-1	Y	River	Y	Y	5/2/05	edge	Y			VG	B. atten, B. illic, Kunz glab, Allo Fras, Aden. cyg,
3-2				Y	"	"				EX-VG	= 4-4
4-1	-			Y	"	"				> G (can't see)	= 4-4
4-2				Y	"	"				D	= 4-4
4-3				Y	"	"				EX	= 4-4
4-4				Y	5/12	edge				EX	B. illic, B. atten, Allo Fras, Kunz glab, E. calo, E. marg
4-5				Y	"	"	Y			G	E. rudis, M. preis, M. later, M. rhaph, B. juncea
<del>4-6</del>			Y	<del>Y</del>	<del>5/12</del>	<del>edge</del>	<del>Y</del>			<del>G</del>	<del>= 4-5, 1-1</del>
5-1				<del>Y</del>	<del>5/12</del>	<del>edge</del>	<del>Y</del>			<del>G</del>	
5-2				<del>Y</del>	<del>5/12</del>	<del>edge</del>	<del>Y</del>			<del>G</del>	
6-1				Y	5/12	edge	Y			D-G	M. rhaph, M. preis dense canopy over grazed pad, ? water
6-2				Y	"	"					= 6-2?? (maybe 6-1)
7-1	Y	Depression	Y	Y							
7-2				Y							
8-1				Y			Y			G	E. rudis, M. preis, M. rhaph
8-2	-aerial	w-Melpre		Y	5/12	dist	Y			CD	M. preis
8-3				Y	5/12	dist	Y			G	M. preis, M. rhaph, M. lat
9-1			Y	Y	"	"	Y			G	= 9-1
9-2			Y	Y	"	"	Y			G	= 8-1
9-3			Y	Y	"	"	Y			G	
10-1	-aerial	w-Melosp.		Y			Y				
11-1				Y	5/12	edge	Y			D-CD	M. rhaph, M. preis over paddock
11-2				Y	"	"	Y			VG	E. rudis, M. rhaph, Kunz glab, Plend esc, sedges
11-3				Y	5/12	dist	Y			D-CD	= 11-4
11-4				Y	5/12	edge	Y			D-CD	E. rudis, M. rhaph over paddock
12-1			Y								} see map sheet 461
12-2			Y								
12-3			Y								
12-4			Y								
12-5			Y								
2-3			Y	N	5/12	edge				EX	Serp River Nat Res
6-3				Y	"	distance	Y			D-GD	M. preis over open water
11-5				Y	"	"	"			D-CD	E. rudis, M. preis, M. rhaphio

NOTES