

461

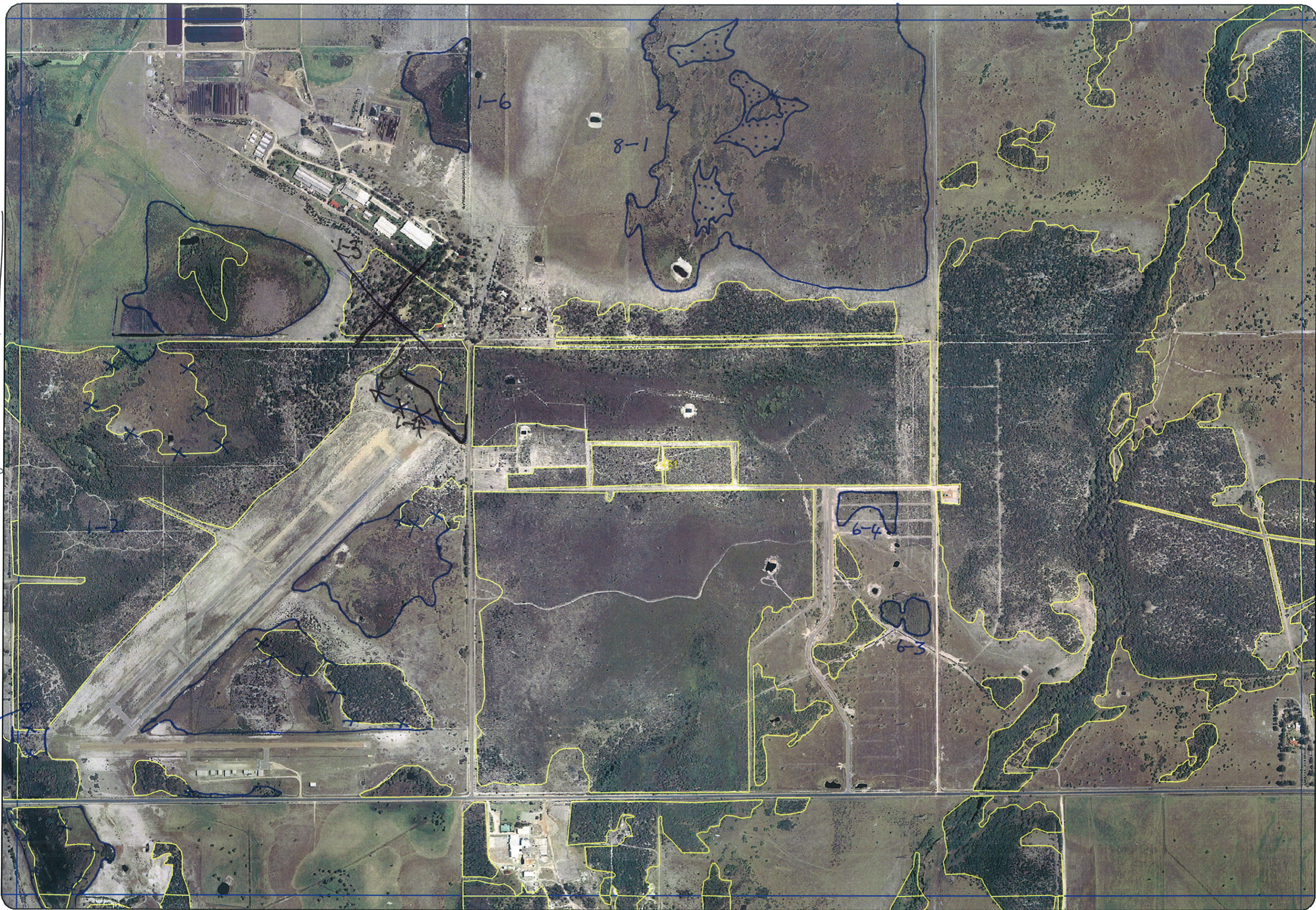
→ New lines

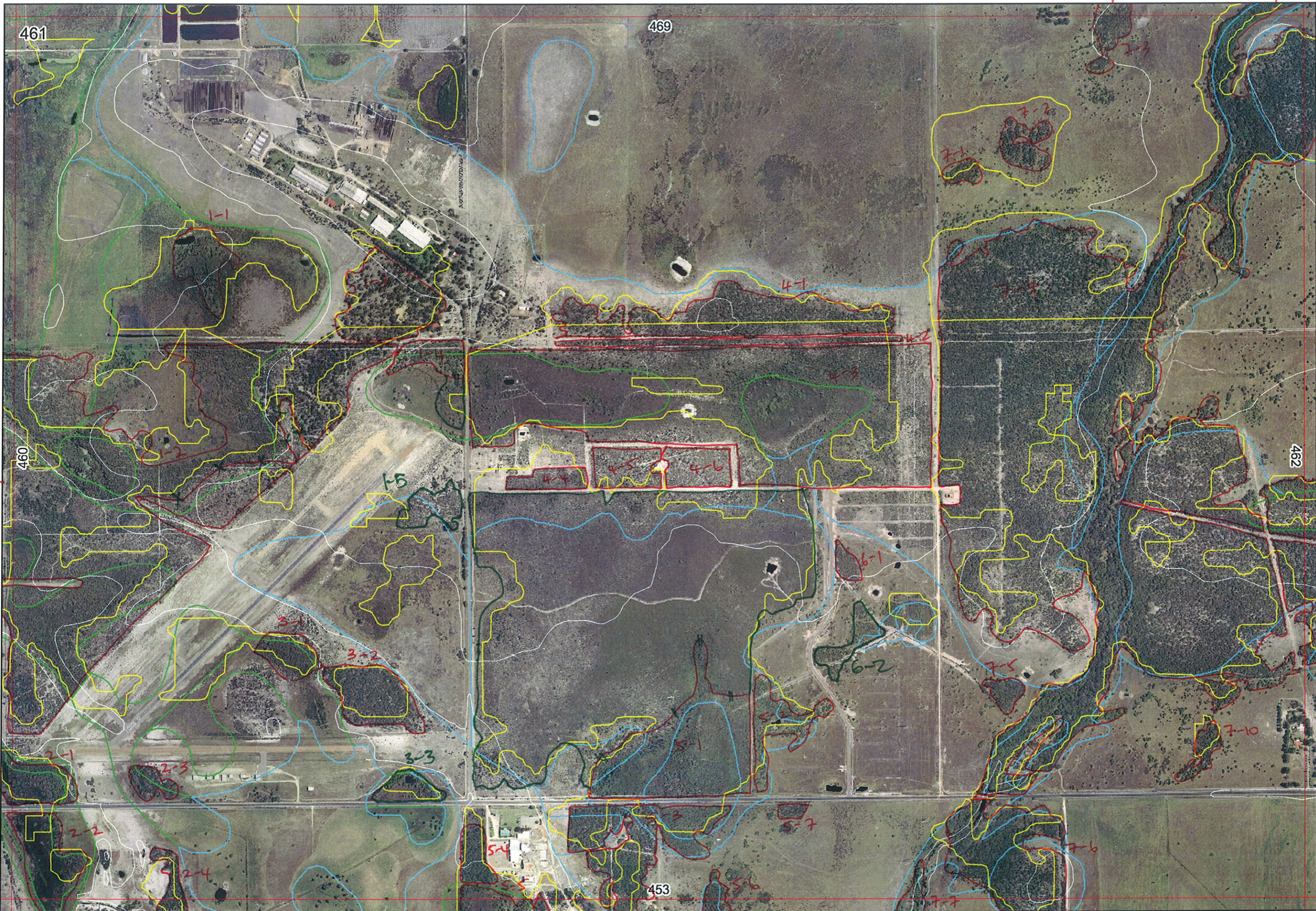
X Delete old line

☐ Holes

* Change 1-4
* Delete 1-3

Joins
1-2
2-1





Ag

EEEA

REMNANT-PART NO	NON-LINEAR	LINEAR PLUS OR Y/N ASS	CROSSES MAP SHEET BOUNDARY (Y/N)	FIELD VISIT REQ YES/NO	FIELD DATE	LOCAT. OBSERV.	WETLAND VEG (Y/N)	SIM REM UP 2 FCT.	DETAIL (Y/N) (Release)	VEGETATION CONDITION			VEGETATION PREVIOUS INFO
										No Units	MLU	Struct/ Pans	
1-1	See Add. formal sheet		Y	Y	5/12/05	dist	Y		Simon (2005)	4	P		B. atten, B. illic, E. marg, B. menz, Aden cyg, Allo fras
1-2			Y	Y	5/12/05	edge	Y						PLANTINGS
1-3	See Additional			Y									M. preis, Mel rhaph, sedges, typha in drain
1-4		1-2		Y			Y						M. preis, Mel rhaph, Kunz glab, sedges
2-1			Y	Y	5/12	edge	Y						= 2.1
2-2			Y	Y	5/12	"	Y						= 2.1
2-3				Y	"	"	Y						Kunz glab, Nutt flori
2-4			Y	Y	"	dist	Y						= 3-2
3-1	See Add. formal sheet			Y	5/12	-							
3-2		3-1		Y									Gd - VG 15/2/06
4-1				Y									
4-2				Y									
4-3				Y	5/12	edge	Y						M. preis, M. latent, sedges, Kunz glab, Billic
4-4				Y									
4-5				Y									
4-6				Y									
5-1				Y	5/12	edge	Y part						B. illic, Kunz glab, Allo fras, M. preis, Nutt flori, Xanth brun, Reg cil, some open water
5-2				Y	8/12	edge	Y						M. rhaph
5-3			Y	Y	5/12	edge	Y						Kunz glab, Allo fras, Mel preis, some open water
5-4				Y	5/12	edge							Allo fras, B. atten, Billic, Kunz glab, Nutt flori
5-5			Y										
5-6			Y										
5-7				Y	5/12	edge	Y						Kunz glab, Mel rhaph, sedge
6-1				Y	"	"	Y						M. rhaph, Kunz glab, M. preis
7-1													
7-2													
7-3			Y										
7-4			Y	Y	5/12	edge	part Y						B. illic, B. att, Allo fras, Kunz glab/Erudis, M. rhaph creek
7-5				Y	"	"	Y						Erudis, M. rhaph
7-6			Y	Y	5/12	edge	Y						M. rhaph, M. preis, sedge, creek
7-7			Y										
7-8			Y	Y									
7-9			Y	Y									
7-10				Y	5/12	edge	Y						M. rhaphio
3-2				Y	5/12	dist							Allo fras, B. att, Billic, B. menz, Xanth brun
3-3				Y	5/12	edge	Y						M. rhaph, Kunz glab, sedges
1-5				Y	"	edge							B. menz, B. illic, Kunz glab
6-2				Y	"	"	Y						M. rhaphio, sedge
1-6							Y						
6-3							Y						
8-4													
6-4													
8-1													

Entered 13/12/05
re-entered 20/1/06

R E M	RE M2	XM AP	LIN TYPE	L I N E A R	M L U	U N I T S	U P L A N D ?	W E T L A N D ?	V I S I T ?	DETAIL/ Area Name	VEG CON	Field date	OBS From	YNOTASS	D E T V I S R E Q D	COMMENTS	VEG STRU C/ DENS	FCT	DOMINANTS		
																			1	2	3
1	1	N	—	N	P	4		Y	N	Proposed Nambearup Industrial Park	VG	NA		no access, Report	Y	Priority conservation area incl Siemon (2005); condit. from report	Report	NA			
1	2	Y	—	N	B/P	4	Y	Y	Y		EX to G	5/12	edge	limited public access	Y	bank menz; some aerial interpretation (BSE)	W/F		Banksia species	Euc marg	Allotras.
			PLUS OLD 2-1														F		MEL PRE	MEL RHA	KUNZ GLAB
																	M		Not described		
1	3	N	—	N	B					Prop. Nambearup Industrial Park	G	NA	transects	no access, Report	N	condition after Siemon (2005)					
3	1	N	—	N	B/P	3	Y	Y	Y		VG		dist.	limited viewing							
			(3-1 PLUS 3-2)																		
6	4	N	—	N	B	1		Y	NA		CD to G	NA	aerial	Not mapped first	N		M	NA	Kun 5/06		
8	1	X	—	N	B/P	3		Y	NA		ED to D	NA	aerial	Not m. prior first time	Y		M?	NA			
																	S?	NA			

Summary/General Comments: A consolidated group of large remnants priority to protect viable connected large area VERT LIKELY TEL, DRE, Priority, Sig fibre and new units vegetation.

