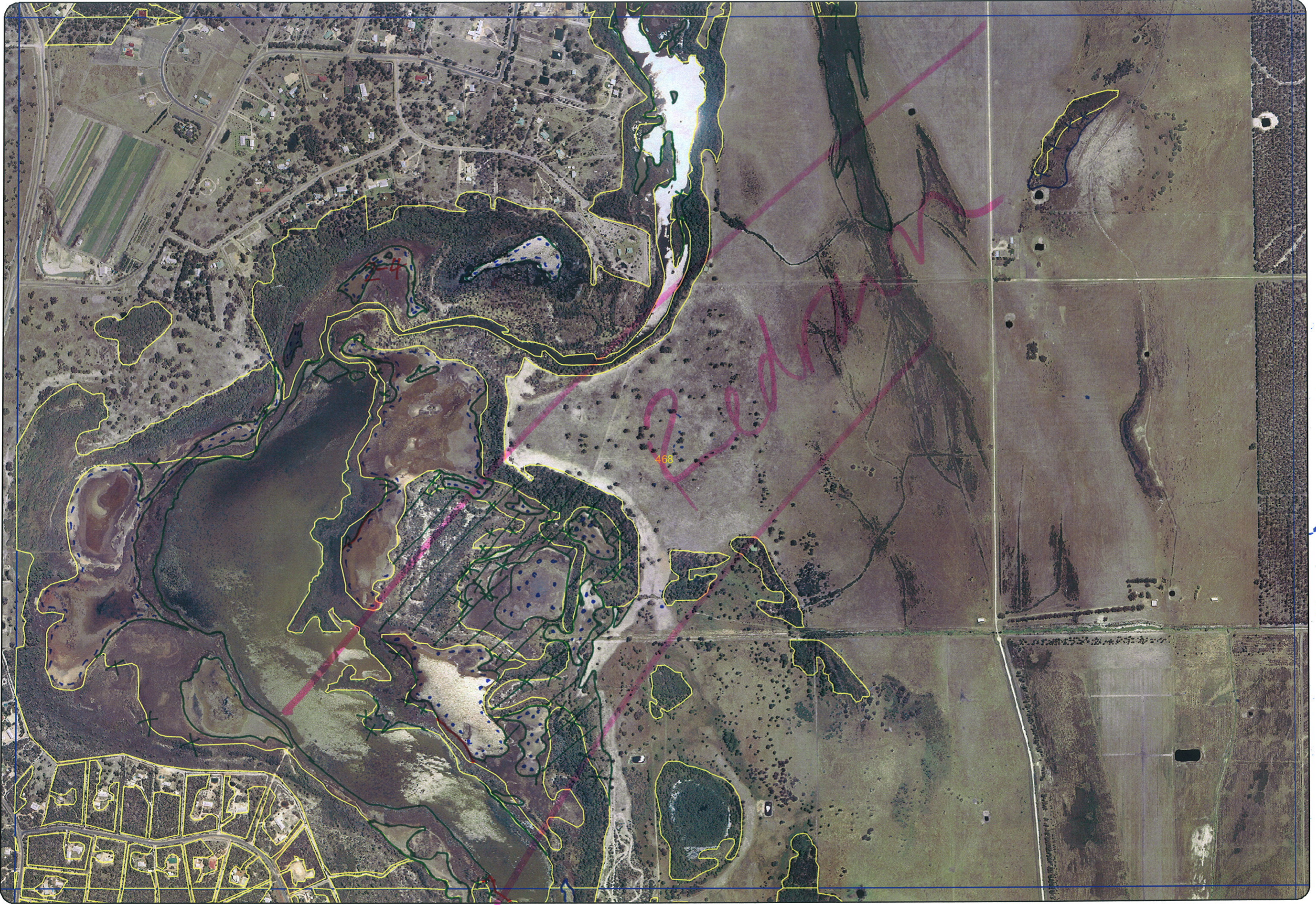


468



↑ 1-2



Plantation

Plantation

467/4-8

3-1

467/4-8

3-12

467/4-8

467/4-8

3-20 OK 1516 3-10

2-3

ADDITIONAL - all changes no field check BUT general idea River plus 2002 + 2005 photos

Map Sheet Number 468

Pre Field Recorder(s) BJK (27/1/06) Field Recorder(s)

Swan Bioplan Vegetation Mapping Data

R E M	RE M2	XM AP	LIN TYPE	L I N E A R	M L U	U N I T S	U P L A N D ?	W E T L A N D ?	V I S I T ?	DETAIL/ Area Name	VEG CON	Field date 200_	OBS From	YNOTASS	D E T V I S R E Q D	COMMENTS	VEG STRUC/ DENS	FCT	DOMINANTS		
																			1	2	3
2	4	N	—	N		1		Y					aerial	Map Changes	Using 2002 and 2005 photos plus river knowledge, amended lines.	3	NA				
4	2	N	—	N		1		Y					aerial	"	River Island	W	NA	Metaleuca			
4	3	N	—	N		1		Y		Need river trip to see it by boat.			aerial	"	"	W	NA	Metaleuca			
4	4	N	—	N		1		Y			aerial	"	"	"	"	W	NA	Metaleuca			
4	5	N	—	N		1		Y			aerial	"	"	"	"	W	NA	Metaleuca			

Summary/General Comments

*Entered 13/12/05
 corrected 20/1/06*

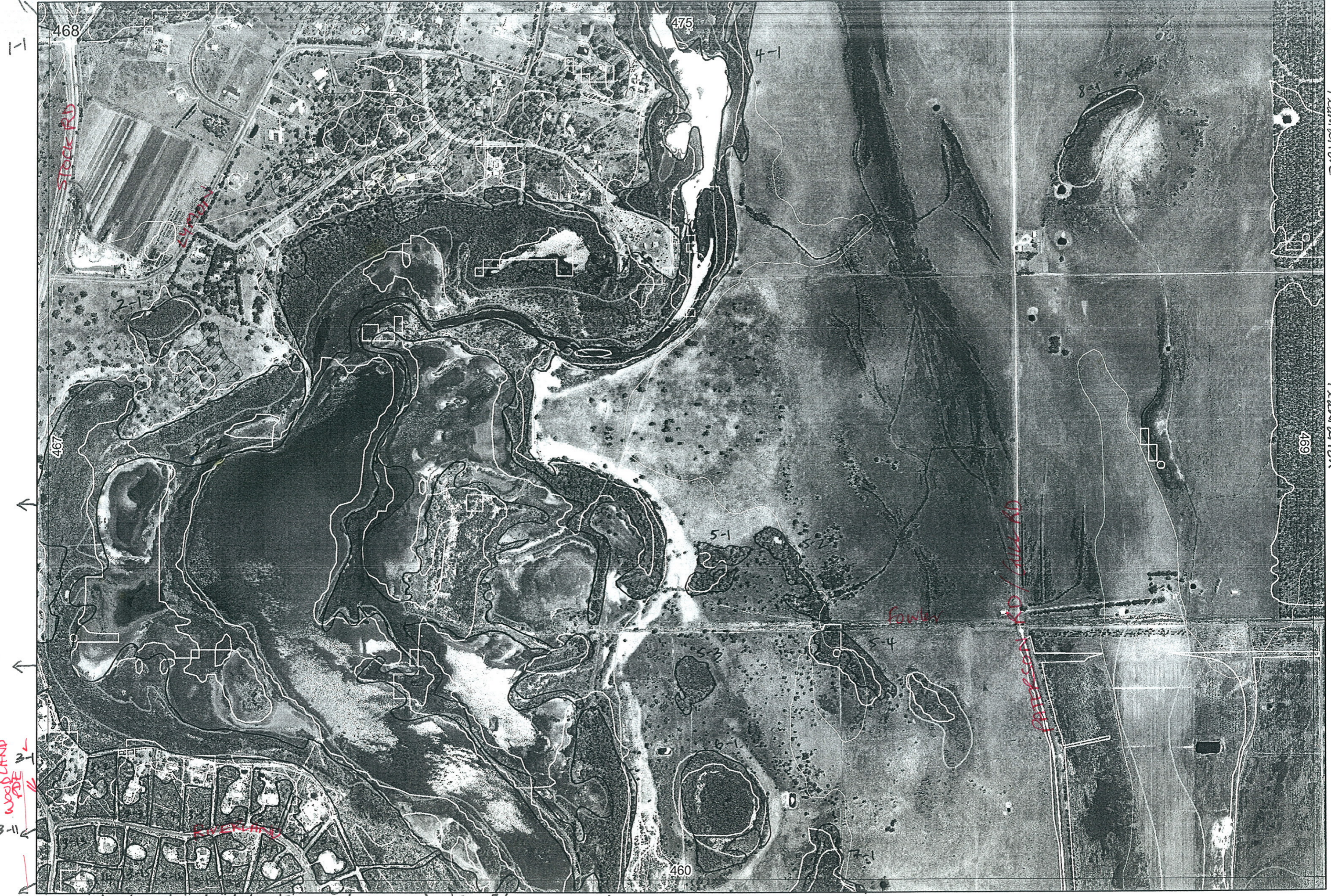
REMNANT-PART NO	NON-LINEAR	LINEAR PLUS	CROSSES MAP SHEET BOUNDARY (Y/N)	FIELD VISIT REQ YES/NO	FIELD DATE	LOCAT. OBSERV.	WETLAND VEG (Y/N)	SIM REM	DETAIL (Y/N)	VEGETATION CONDITION	VEGETATION/PREVIOUS INFO
1-1			Y	Y	30/11	edge	N			VA	Same as 1-2
1-2			Y	Y	30/11	edge	N			VA-EX	Eucalyptus Acacia Kongka Bammen Banatt Allra Vian on Xylococ
2-1					30/11	edge	Y		N	VA-EX	Melaleuca Melaleuca Eucalyptus Eucalyptus Perell
2-2	Y	River	Y	Y			Y				Serpentine R NR
2-3	Y	River	Y	Y			Y				Serpentine R NR
3-1											Banatt Bangra Bammen Kongka Allra Eucalyptus Eucalyptus Maerei
3-2									all		
3-3						edge/road			VA-EX		
3-4											Eucalyptus Kongka Eucalyptus
3-5											
3-6					30/11				all		
3-7				Y						VA-EX	
3-8											
3-9											
3-10			Y								
3-11			Y							all	Banatt Bangra Bammen Kongka Allra Eucalyptus Eucalyptus Maerei
3-12			Y							VA-EX	
3-13			Y							all	
3-14			Y								
3-15			Y								
3-16			Y								
3-17			Y								
3-18			Y							all	Eucalyptus Kongka
3-19			Y							VA-EX	
3-20			Y								
4-1	Y	River	Y	Y			Y				too far
5-1											too far
5-2					30/11	distance	Y		2	>D	too far
5-3											too far
6-1				Y			Y				
7-1				N			Y				
8-1				N			Y				
5-4					30/11	distance	Y		2	>D	too far
2-4	Y	channel	Y				Y				Serpentine river NR.

Part of 467/5 4-8

deleted from database 21/6/06 by K. Clarke

NOTES

↑ 1-2



468

475

4-1

467

469

460

2-1

5-1

5-2

5-3

5-4

6-1

3-1

3-11

3-12

13-20

13-16

2-3

4-1

RIVERLAND

Stock Rd

LYNCH

Fowley

Patterson Rd / Call Rd

Plantation

Plantation

Lakes Rd

Done.

1 acre. - stock
WOODLAND
WOOD PILE