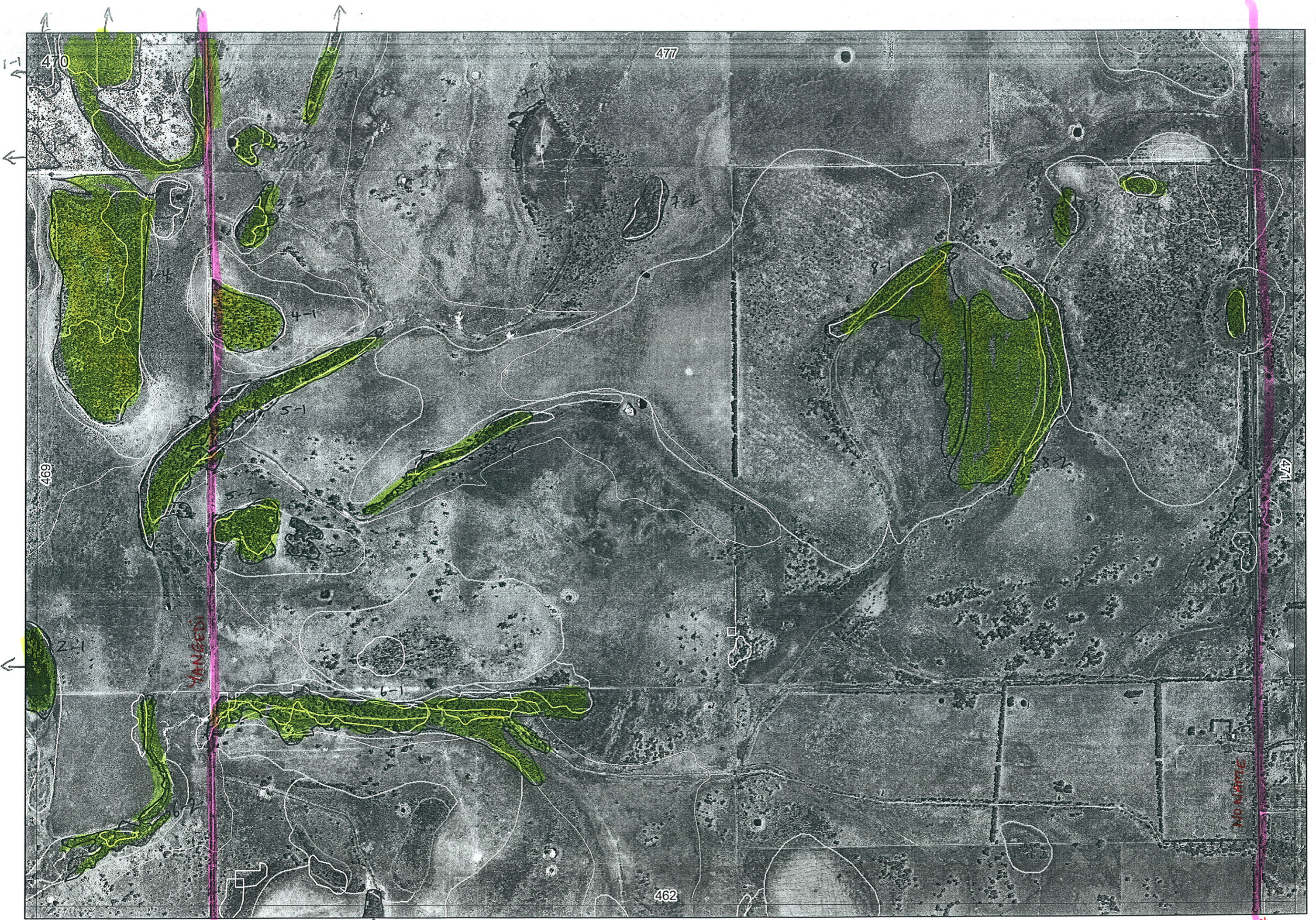




9-1



↑

470

477

←

←

469

471

462

YANGEDI

2-1

3-1

3-2

4-1

5-2

6-1

6-2

7-2

8-1

8-2

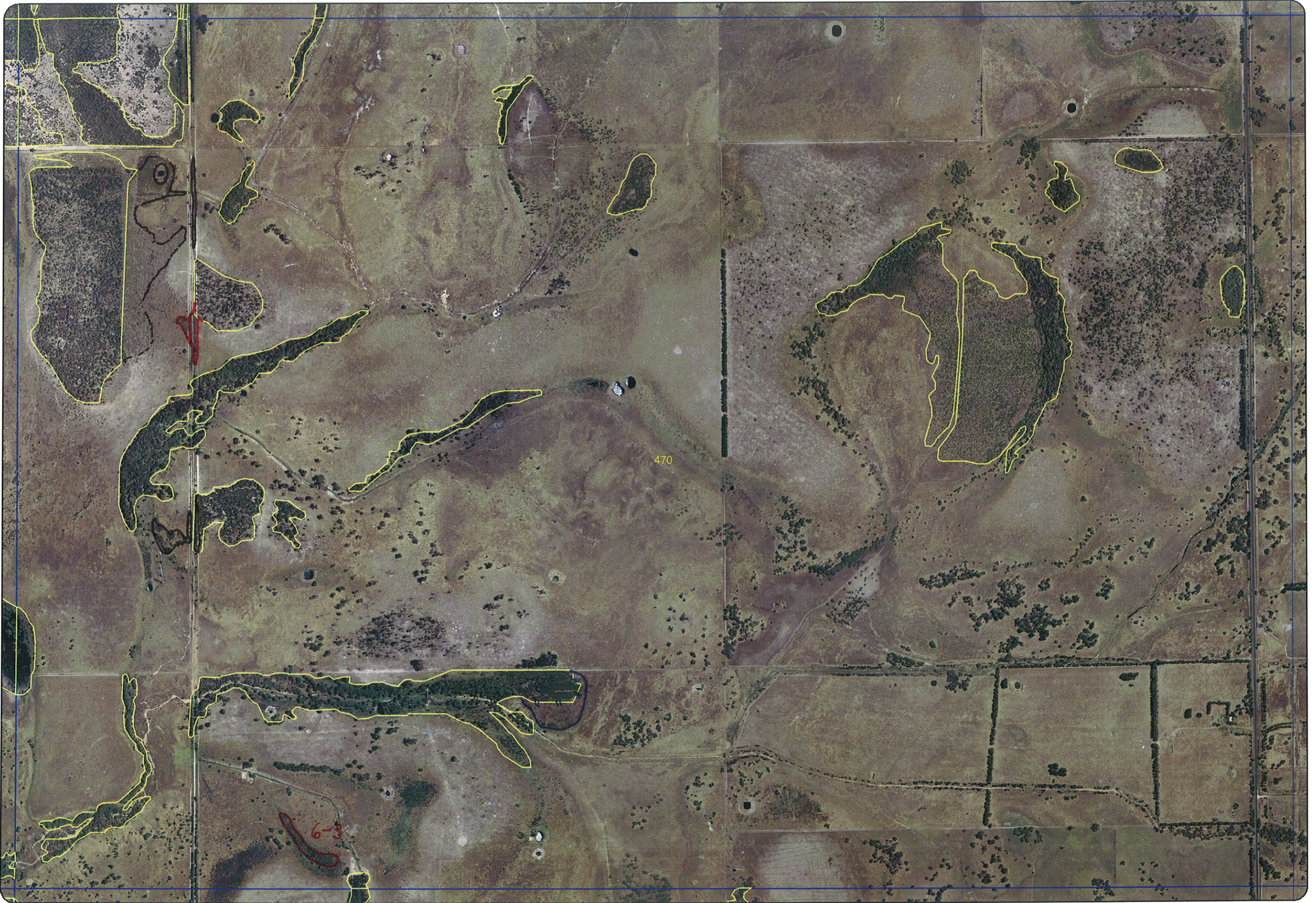
9-1

↓ To Lakes Road

ROAD RESERVE

↓ To Lakes Rd.

470



470

6-3

*entered AW
18/1/05*

REMNANT-PART NO	NON-LINEAR	LINEAR PLUS	CROSSES MAP SHEET BOUNDARY (Y/N)	FIELD VISIT REQ YES/NO	FIELD DATE	LOCAT. OBSERV.	WETLAND VEG (Y/N)	SIM REM	DETAIL (Y/N)	VEGETATION CONDITION	VEGETATION/PREVIOUS INFO
1-1			Y	Y						not seen	
1-2			Y	Y	22/12	D				cant see cant see good stuff	Kungla (regen in all that can be seen), Nuytlo, All Fra
1-3			Y	Y		E				G (narrow)	Melpre, Eucal, Astfas, Kungla
1-4			Y	Y		O			Y	VG-G	Banatt, Banill, Banmen, Kungla (understorey not vis)
2-1			Y	Y			Y			not seen	
3-1	Y	channel	Y	Y		O				O	Eucrud, Eucal, Mel sp. (chap/are)
3-2			Y	Y		O	Y			G	as below
3-3			Y	Y		O				G	Jungla, Astfas, Melpre, Melsha
4-1			Y	Y		E				O	Banill, Banatt, Jungla (understorey present not vis)
5-1	Y	Drainage	Y	Y		E	Y			VG-G-O	Eucrud, Regal, Astfas, Melpre, Melsha, Jungla (Eucal edges)
5-2			Y	Y		E	Y			G	Kungla, Banatt, Banmen, Adomei, Phlcl, Regal, Baskrem, Melpre
5-3			Y	Y						not seen	
5-4	Y	Drainage	Y	Y						not seen	
6-1	Y	Road	Y	Y		E	Y			G-O (no understorey)	Eucal, Eucrud, Melosul, Melsha
6-2	Y	Drainage	Y	Y		O				O	Melosul, Melsha, Eucrud, Melpre
7-1	Y	Edge hedge	Y	No Road						not seen	
7-2			Y	No Road						not seen	
8-1			Y	Y						not seen	
8-2			Y	Y						not seen	
8-3			Y	Y						not seen	
8-4			Y	Y						not seen	
8-5			Y	Y		E				O	Melsha, Astfas, Eucal, Mellet
9-1			Y	Y		O				plantation	
1-5			Y	Y						not seen	
6-3			N	Y			Y				

Mellet

NOTES