



1-17



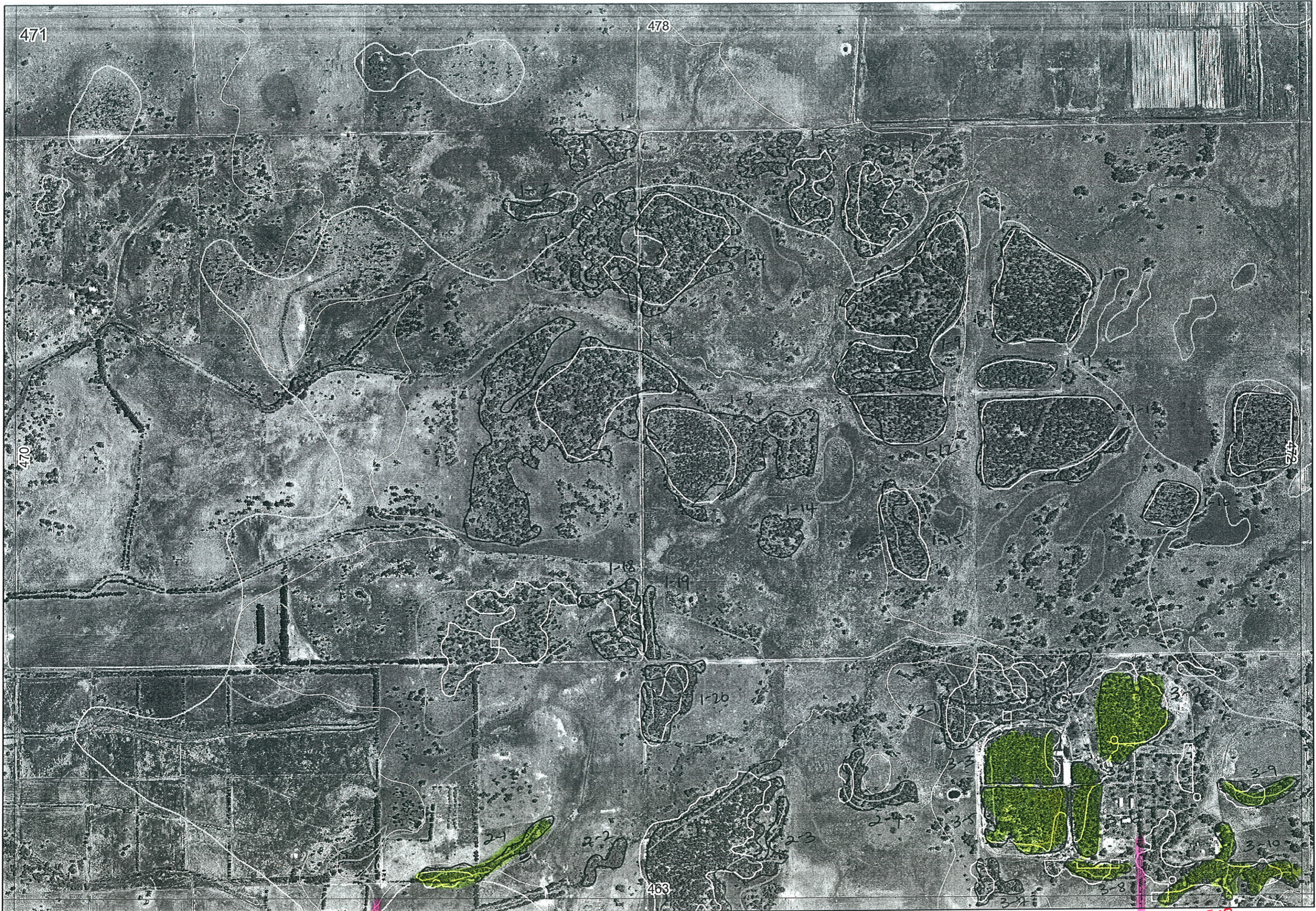
471



1-21

1-21

2-5



471

478

470

472

1-17

463

ST BLAISE CR.

Redheads Rd



*entered AW  
18/1/06*

REMNANT-PART NO	NON-LINEAR	LINEAR PLUS	CROSSES MAP SHEET BOUNDARY (Y/N)	FIELD VISIT REQ YES/NO	FIELD DATE	LOCAT. OBSERV.	WETLAND VEG (Y/N)	SIM REM	DETAIL (Y/N)	VEGETATION CONDITION	VEGETATION/PREVIOUS INFO
1-1	-aerial	U-J/M		No Roads							
1-2	-aerial	W-melap.			22/12						
1-3	-aerial	U-J/M									
1-4	-aerial	U-J/M									
1-5	-aerial	U-J/M									
1-6	-aerial	U-J/M									
1-7	-aerial	U-J/M									
1-8	-aerial	U-J/M + J, W-melap.								not seen	
1-9	-aerial	U-J/bansp.									
1-10	-aerial	U-J/bansp.									
1-11	-aerial	U-J/bansp./M									
1-12	-aerial	U-J/M									
1-13	-aerial	U-J/M									
1-14	-aerial	U-J/M									
1-15	-aerial	U-J/M									
1-16	-aerial	U-J/M									
1-17	-aerial	U-J/M									
1-18	-aerial	U-J/M									
1-19	-aerial	U-J/M									
1-20	-aerial	W-melap.									
2-1	Y	Road/Drain?		Y							
2-2				No Road							
2-3			Y	No Road							Eucal, Eucmar
2-4	-aerial	W-Melap								not seen	
3-1	-aerial	U-J/bansp.	W-Melap.							not seen	
3-2											Kungla + as in 3-6
3-3	-aerial	U-J/bansp.		Y					Y	not seen	
3-4				Y						G-VG	as in 3-6
3-5	-aerial	U-J/bansp.		Y					Y	not seen	
3-6				Y					Y	G-VG	Eucal, Eucmar, All for, Xanth, p.oi, Bangra, Bonatt, Bannan
3-7	-aerial	U-J/bansp.		Y						not seen	
3-8				Y							Eucal, Eucmar, Kingaus, X Arvensis
3-9	-aerial	W-Melap.		Y						not seen	
3-10				Y							came on 3-8 - it seems
1-21							Y				
2-5							Y				
1-22	-aerial	W-Melap.					Y				

NOTES